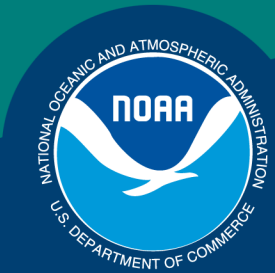


Science, Service, Stewardship



Economic Status of BSAI Crab Fisheries, 2021

Presented by:

Brian Garber-Yonts

Alaska Fisheries Science Center

Economics and Social Science Research Program

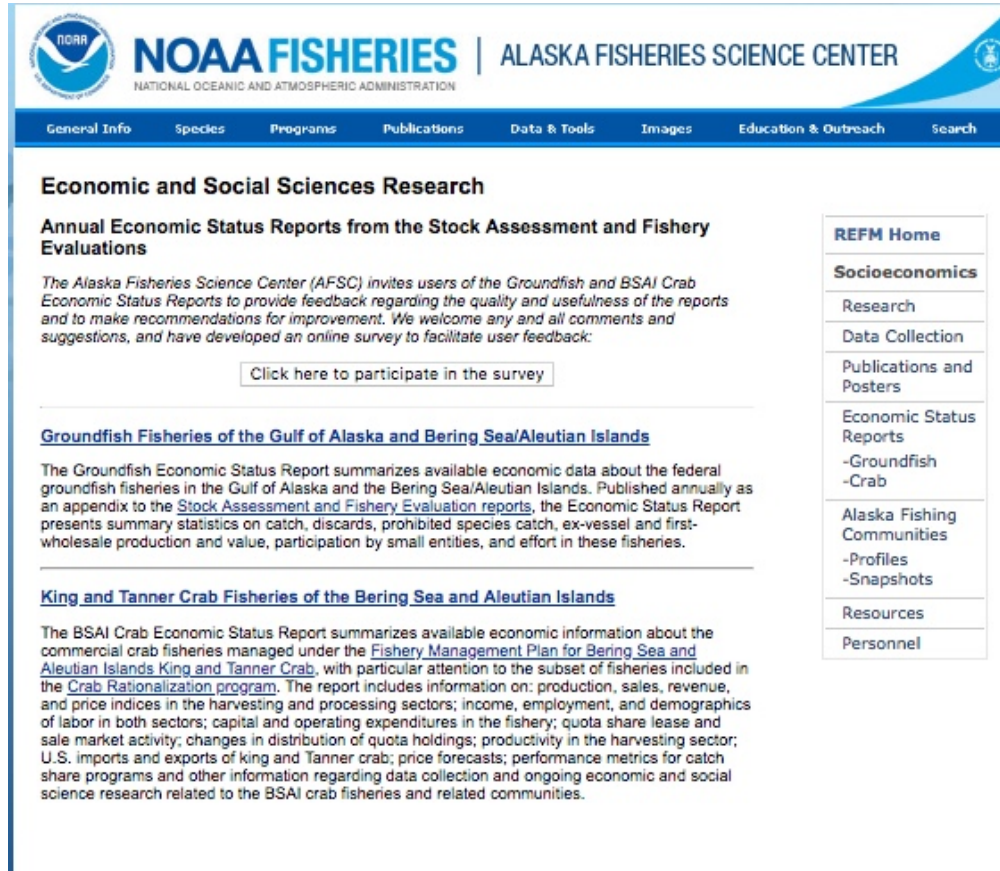
February 1, 2022

**NOAA
FISHERIES
SERVICE**

2021 Crab Economic SAFE Overview

- Executive Summary
- Economic Status and Trends
 - Economic output – production and value, by sector
 - Vessel and processing labor – income and employment
 - Harvest sector operating costs and financial performance
 - IFQ/CDQ lease market, QS market and holdings
 - New: QS Decomposition (in development)
 - Fishing capacity and effort
 - International trade – king and snow crab

Economic SAFE availability



The screenshot shows the NOAA Fisheries Alaska Fisheries Science Center website. The header includes the NOAA logo and the text "NOAA FISHERIES | ALASKA FISHERIES SCIENCE CENTER". Below the header is a navigation menu with links for General Info, Species, Programs, Publications, Data & Tools, Images, Education & Outreach, and Search. The main content area is titled "Economic and Social Sciences Research" and features a section for "Annual Economic Status Reports from the Stock Assessment and Fishery Evaluations". This section includes a paragraph inviting users to provide feedback on the quality and usefulness of the reports, a button to "Click here to participate in the survey", and two sub-sections: "Groundfish Fisheries of the Gulf of Alaska and Bering Sea/Aleutian Islands" and "King and Tanner Crab Fisheries of the Bering Sea and Aleutian Islands". A right-hand sidebar contains a table of contents with links to REFM Home, Socioeconomics, Research, Data Collection, Publications and Posters, Economic Status Reports (Groundfish and Crab), Alaska Fishing Communities (Profiles and Snapshots), Resources, and Personnel.

<https://www.afsc.noaa.gov/REFM/Socioeconomics/SAFE/default.php>

or

<https://www.fisheries.noaa.gov/alaska/sustainable-fisheries/alaska-crab-stock-assessment-and-fishery-evaluation-reports>

AKFIN Economic SAFE Dashboard

<https://reports.psmfc.org/akfin/f?p=501:2002>



Bering Sea and Aleutian Islands crab* in 2020


42.58 million
pounds of catch


\$208.5 million
estimated ex-vessel value


\$48.55 million
harvesting and processing labor payments


64
vessels fishing


14%
share of total ex-vessel value of Alaska fisheries


\$269.7 million
estimated first wholesale value

*Statistics are provided for fisheries included in the Crab Rationalization program, which excludes the Norton Sound red king crab and Pribilof Islands golden king crab fisheries

AKFIN Economic SAFE Dashboard

<https://reports.psmfc.org/akfin/f?p=501:2002>

About **SAFE Highlights** Available Data

Alaska Fisheries Information Network

Bering Crab

42.58 million pounds of catch

*Statistics are provided for fisheries in...

Select charts to display

Chart harvesting sector st

Select earliest year

Select latest year

Select one or more fisheries to chart

- AIG: ALEUTIAN ISLANDS GOLDEN KING CRAB
- BSS: BERING SEA SNOW CRAB
- BST: BERING SEA TANNER CRAB
- BBR: BRISTOL BAY RED KING CRAB
- SMB: ST. MATTHEW ISLAND BLUE KING CRAB

Apply selections

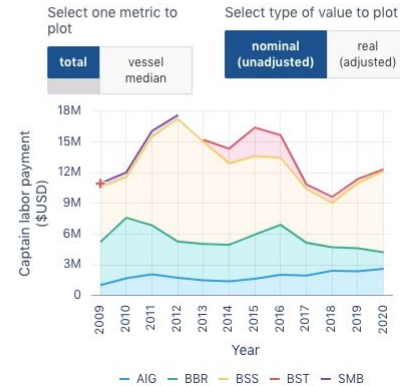
Notes

- Labor payments may be plotted using nominal or real (inflation-adjusted) values. Real values are adjusted to 2020 dollars using the Gross Domestic Product (GDP) chain-type price index.
- Confidential values for labor positions, hours, and pay are

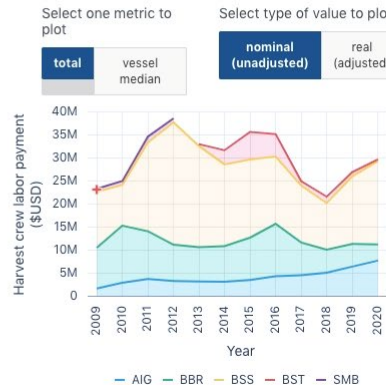
Harvest crew positions



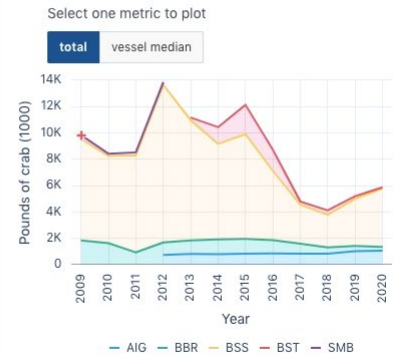
Captain labor payments



Harvest crew labor payments



Harvest crew labor payments, crab equivalent



AKFIN Economic SAFE Dashboard

<https://reports.psmfc.org/akfin/f?p=501:2002>

Alaska Fisheries Information Network

AKFIN Reports Dashboard \ Human Dimensions Data Explorer \ BSAI Crab Economic SAFE \ CRSAFEEXEC01

CRSAFEEXEC01 - BSAI Crab SAFE: harvesting and processing sector output - product volume, gross revenue, and average price, 1998-present

This report presents selected statistics from the Economic Status of the Bering Sea and Aleutian Islands King and Tanner Crab Fisheries of Alaska (BSAI Crab Economic SAFE), produced annually by NOAA Fisheries, Alaska Fisheries Science Center Economics and Social Science Research Program.

Report run time: **January 29th, 2022 9:14pm**
 Data last refreshed: **December 10th, 2021 11:40am**

Filters applied:
Year
 • 1998 - 2020
Fishery
 • ALEUTIAN ISLANDS GOLDEN KING CRAB
 • BERING SEA SNOW CRAB
 • BERING SEA TANNER CRAB
 • BRISTOL BAY RED KING CRAB
 • PRIBILOF ISLANDS RED AND BLUE KING CRAB
 • ST. MATTHEW ISLAND BLUE KING CRAB
 • WESTERN ALEUTIAN ISLANDS RED KING CRAB

Year	Fishery Code	Fishery Name	Count of harvesting vessels	Count of catcher vessels	Count of catcher processors	Count of CFEC permits fished	Count of crab buyers	Count of crab processors	Revenue (\$ million)
2020	AIG	ALEUTIAN ISLANDS GOLDEN KING CRAB	5	5	0	14	12	11	2,5
2019	AIG	ALEUTIAN ISLANDS GOLDEN KING CRAB	5	5	0	16	11	9	3,
2018	AIG	ALEUTIAN ISLANDS GOLDEN KING CRAB	5	5	0	14	11	9	2,
2017	AIG	ALEUTIAN ISLANDS GOLDEN KING CRAB	5	5	0	12	13	12	2,
2016	AIG	ALEUTIAN ISLANDS GOLDEN KING CRAB	5	5	0	12	11	10	2,
2015	AIG	ALEUTIAN ISLANDS GOLDEN KING CRAB	5	5	0	12	9	8	2,
2014	AIG	ALEUTIAN ISLANDS GOLDEN KING CRAB	5	5	0	11	12	10	2,
2013	AIG	ALEUTIAN ISLANDS GOLDEN KING CRAB	6	6	1	14	13	12	2,6
2012	AIG	ALEUTIAN ISLANDS GOLDEN KING CRAB	6	5	2	14	14	13	2,6
2011	AIG	ALEUTIAN ISLANDS GOLDEN KING CRAB	5	4	1	13	14	14	2,
2010	AIG	ALEUTIAN ISLANDS GOLDEN KING CRAB	5	4	1	13	9	8	2,
2009	AIG	ALEUTIAN ISLANDS GOLDEN KING CRAB	5	4	1	13	9	8	2,
2008	AIG	ALEUTIAN ISLANDS GOLDEN KING CRAB	5	4	1	12	7	7	2,
2007	AIG	ALEUTIAN ISLANDS GOLDEN KING CRAB	6	5	1	11	6	6	2,

42.58 million pounds of catch

Notes:
 • Labor payments may be printed using nominal or real (inflation-adjusted) values. Real values are adjusted to 2020 dollars using the Gross Domestic Product (GDP) chain-type price index.
 • Confidential values for labor positions, hours, and pay are

Show Footnotes

SSC Comments (February, 2021)

...The SSC continues to look forward to completion of the quota ownership decomposition effort, which will allow better tracking of what communities are capturing the ownership benefits of the crab fishery.

Results of decomposition by entity-type is included in the document. Community-level distribution of decomposition results is limited by incomplete address information in QS holder administrative files; preliminary results included in presentation.

...The SSC recommends the development of a report card for the Crab Economic SAFE, similar to the Groundfish Economic SAFE, which reflects both the needs and opportunities in the fisheries.

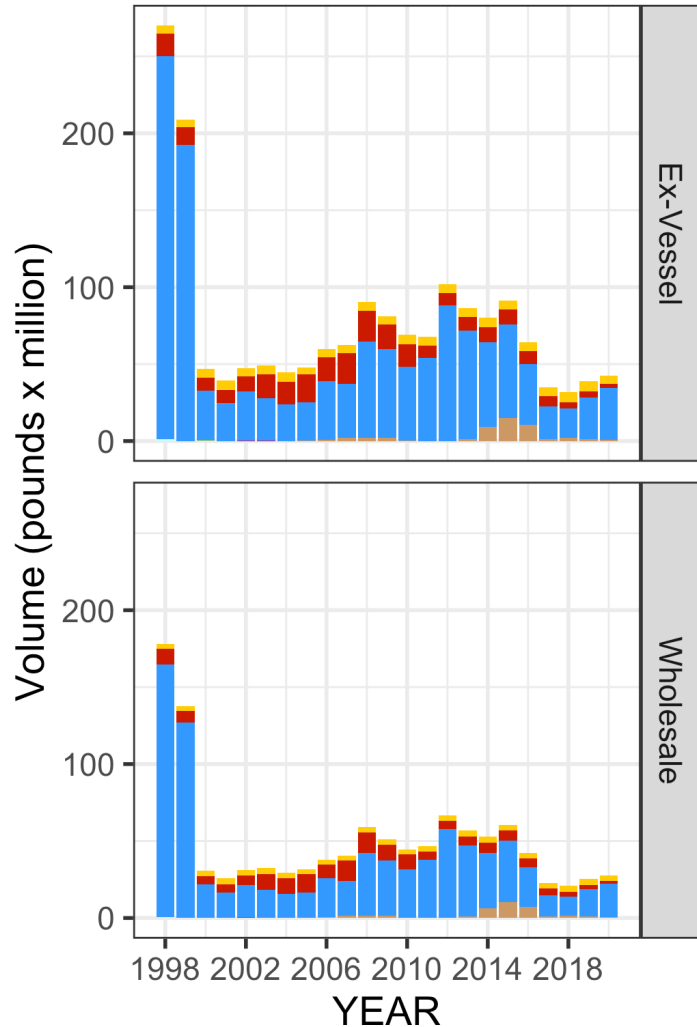
Not completed in time for inclusion in document; results and candidate metrics included in presentation.

TAC 2005/06 – 2021/22

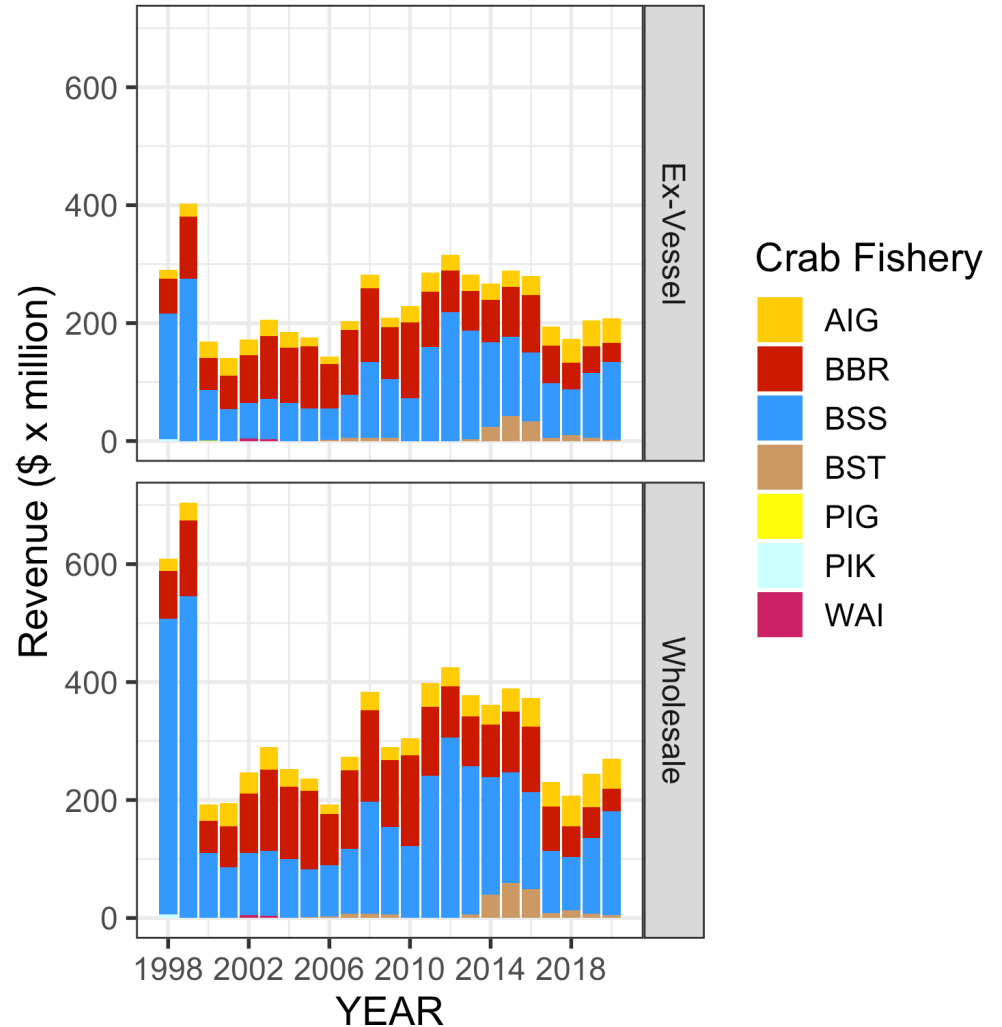


2020 Production & Value

Production Volume,
All Fisheries by Sector

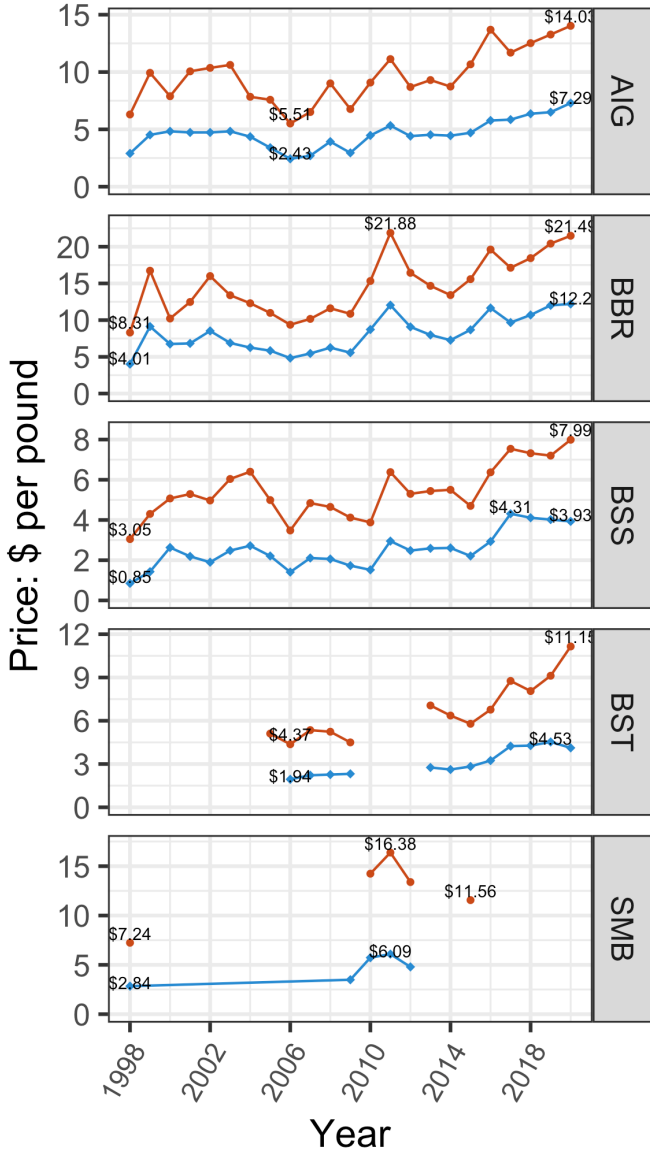


Gross Revenue,
All Fisheries by Sector

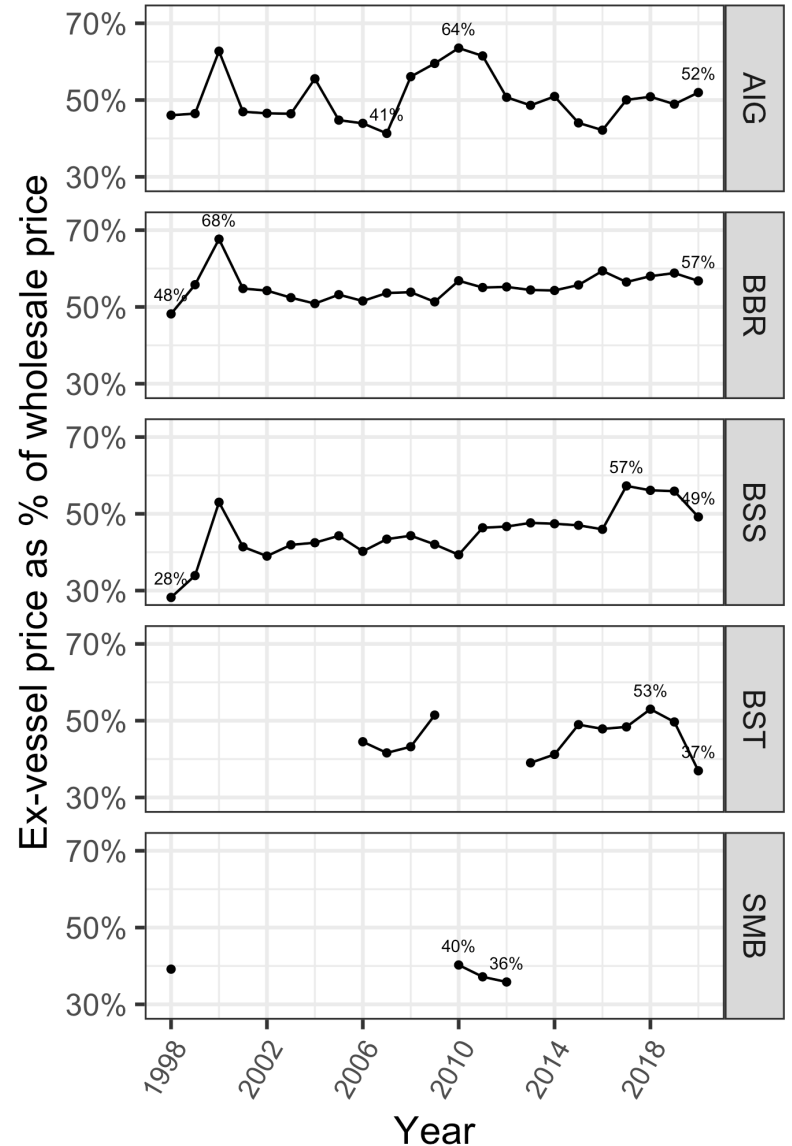


Ex-vessel & Wholesale Price

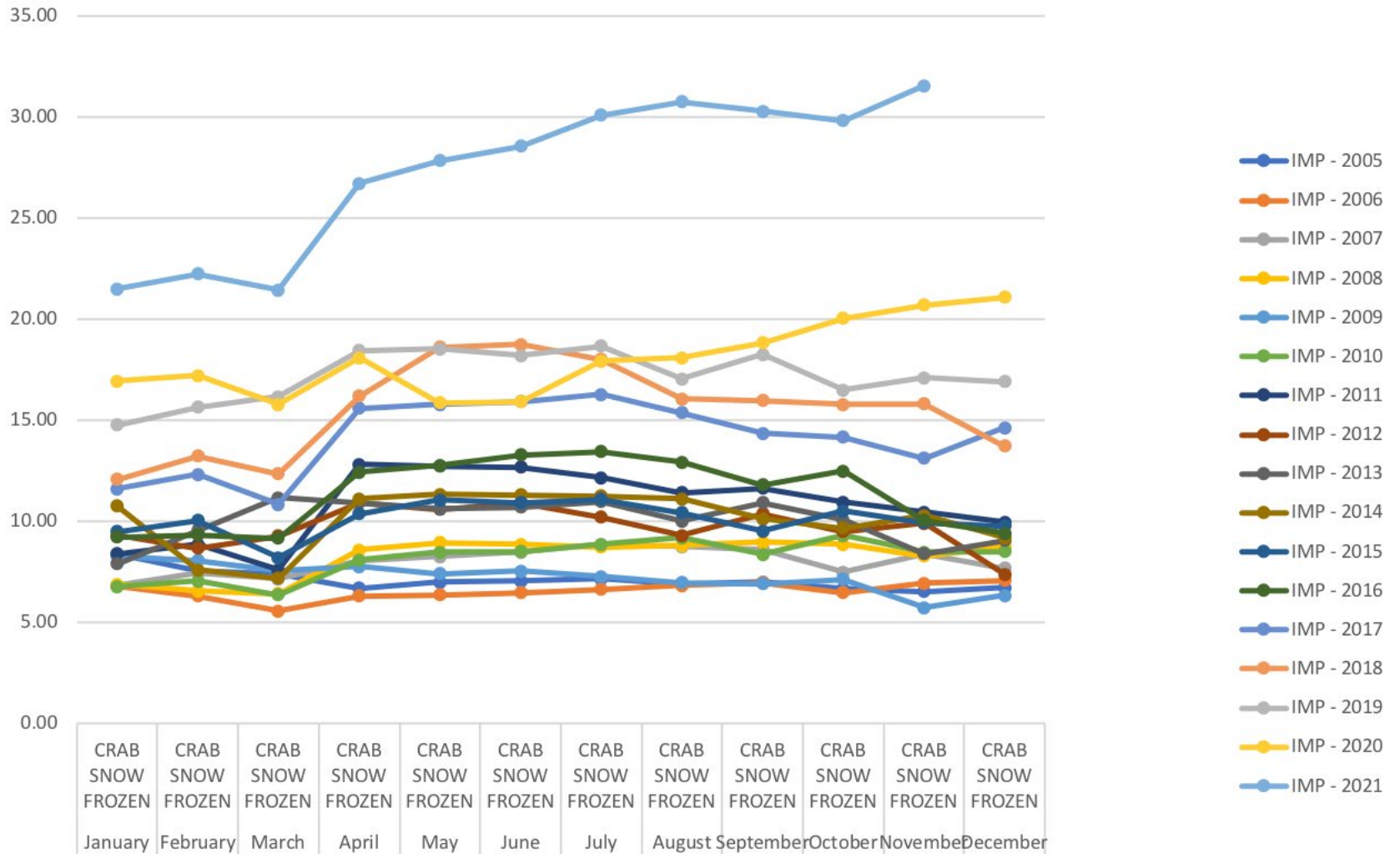
Ex-vessel and First Wholesale Price



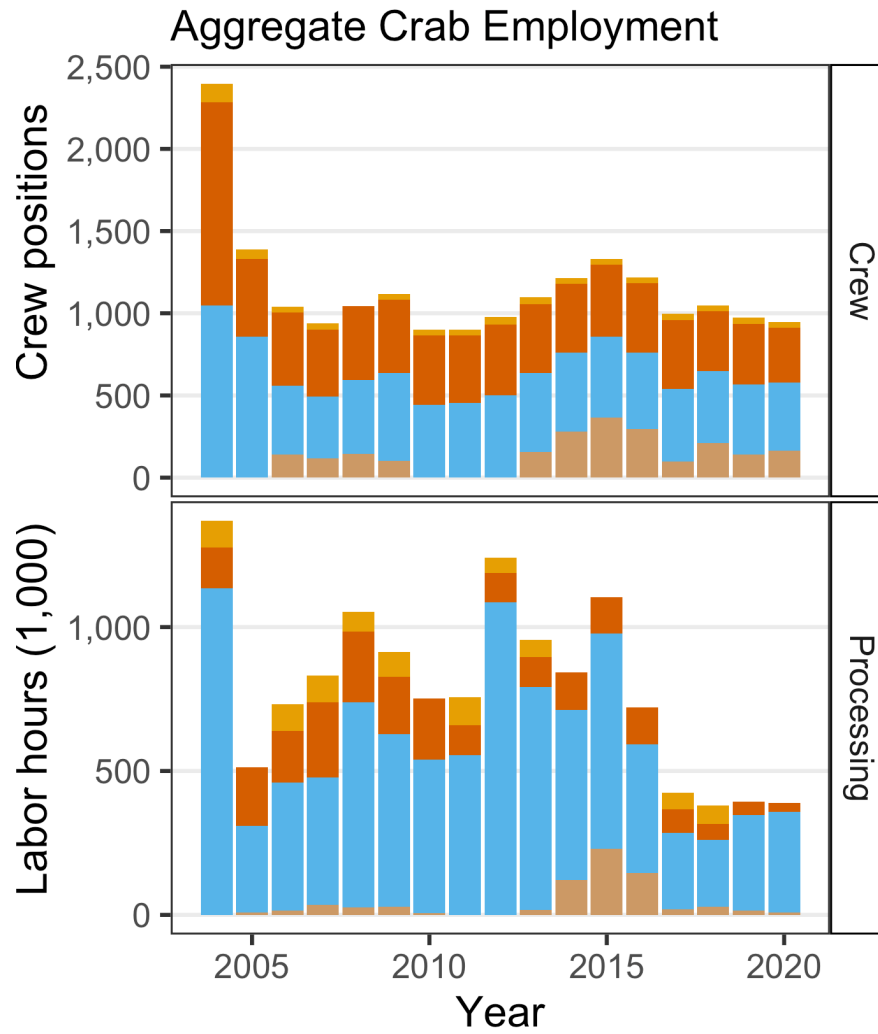
Ex-vessel/First Wholesale Price



Snow crab import price – monthly



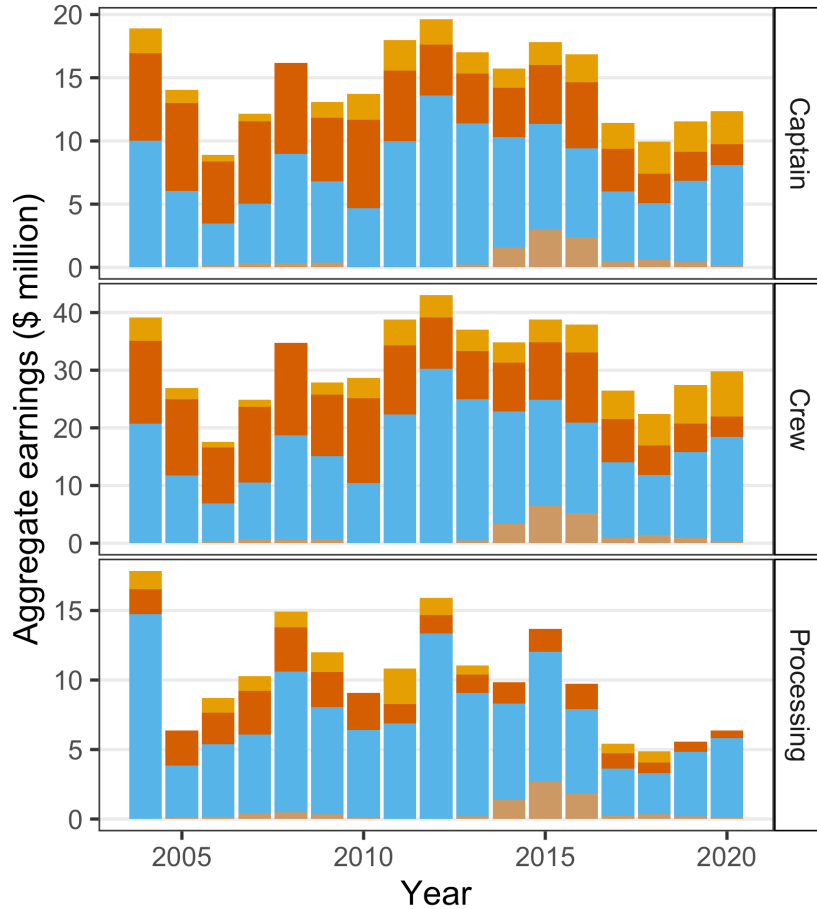
Harvest & Processing Sector Employment



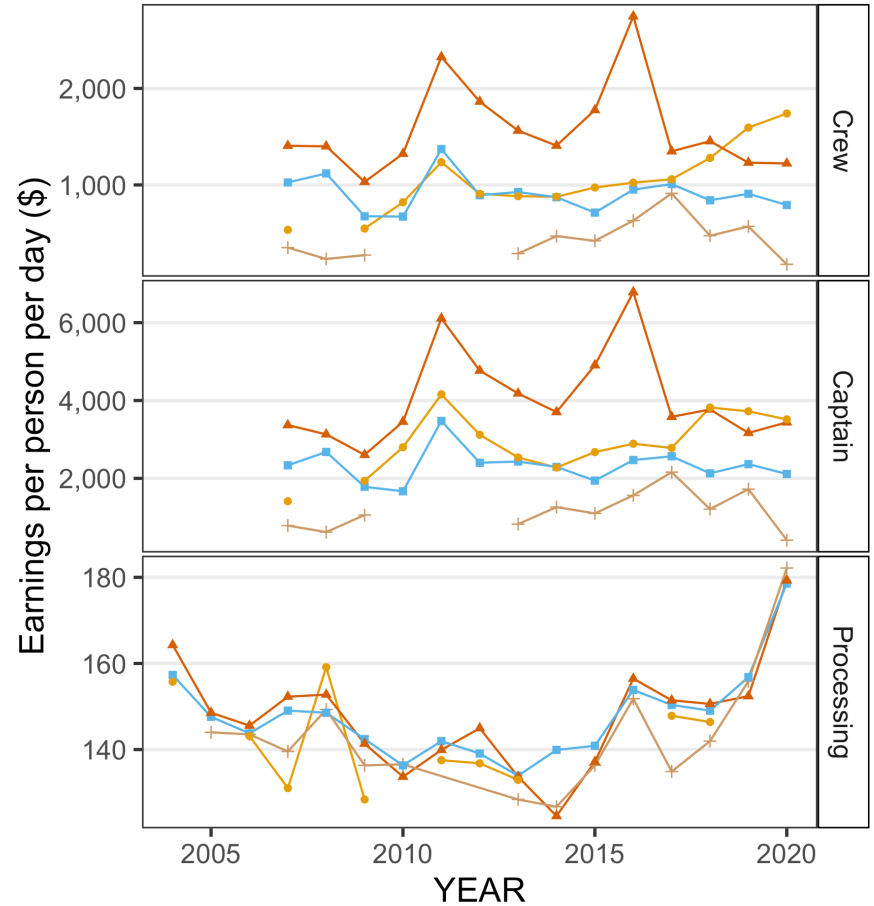
Fishery AIG BBR BSS BST

Harvest & Processing Sector Labor Costs

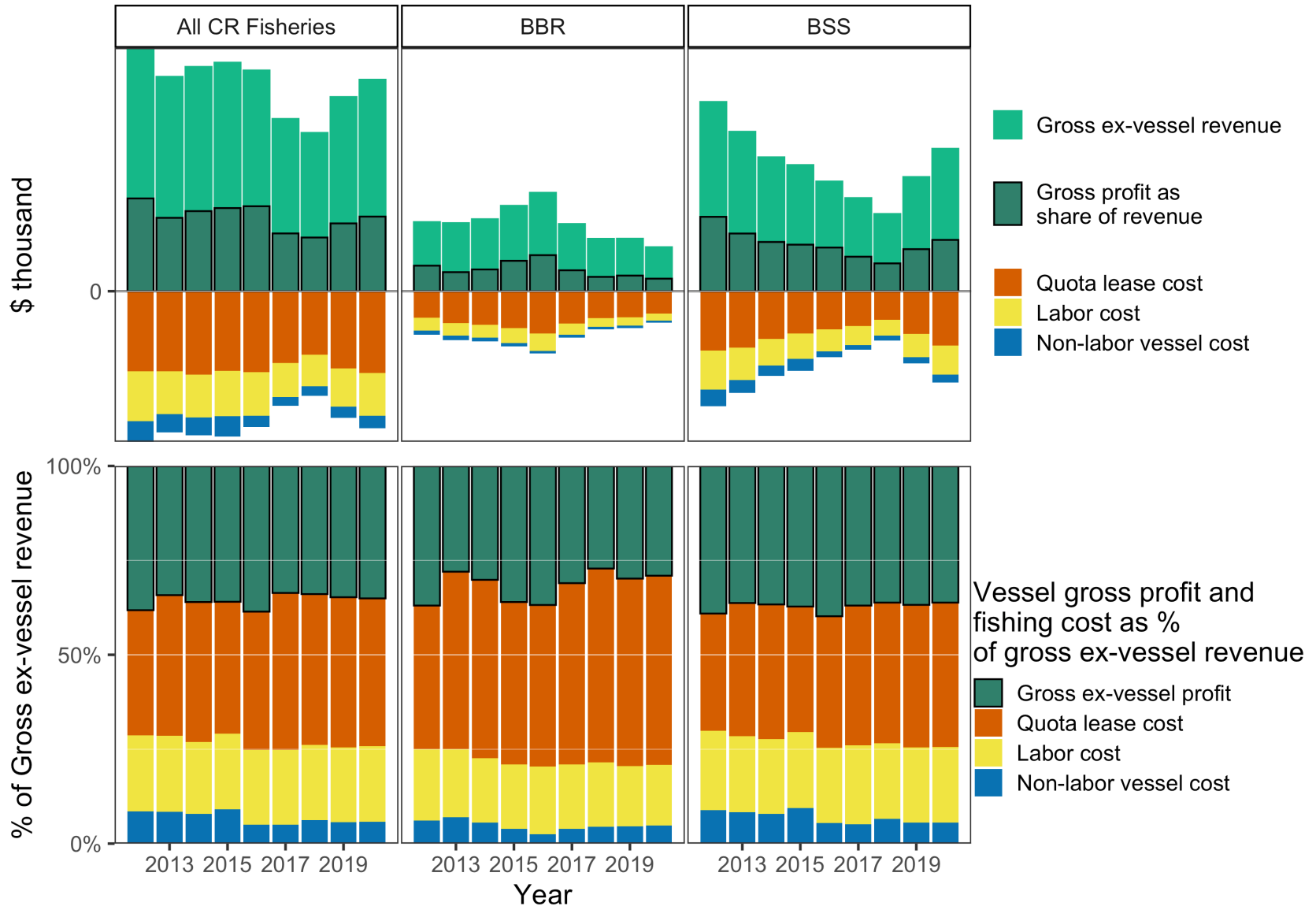
Aggregate Crab Labor Earnings, Crew Share Pay and Processing Wages



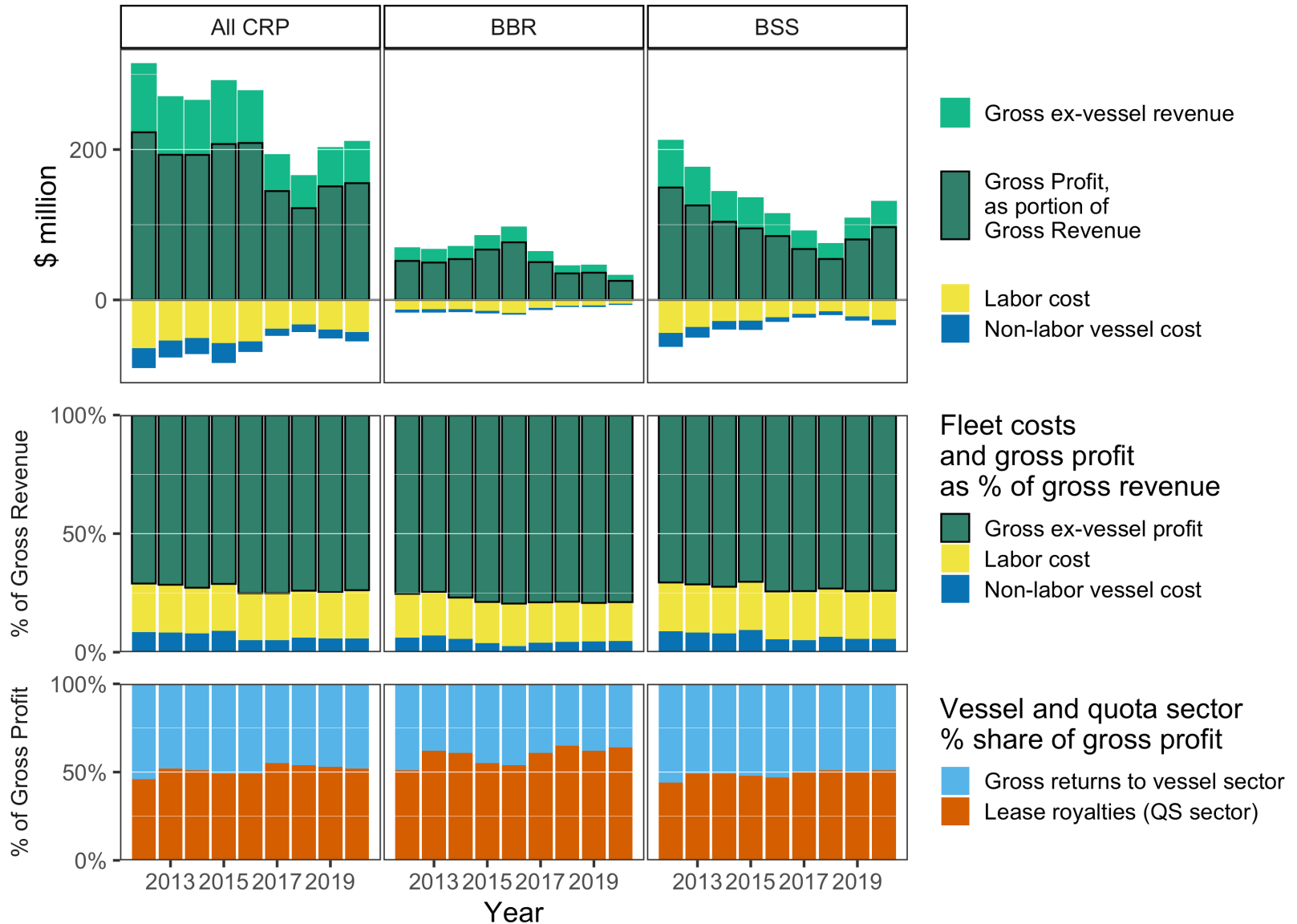
Average Crab Labor Earnings per Day crew pay per vessel-day processing pay per 12-hr shift



Vessel Income Statement

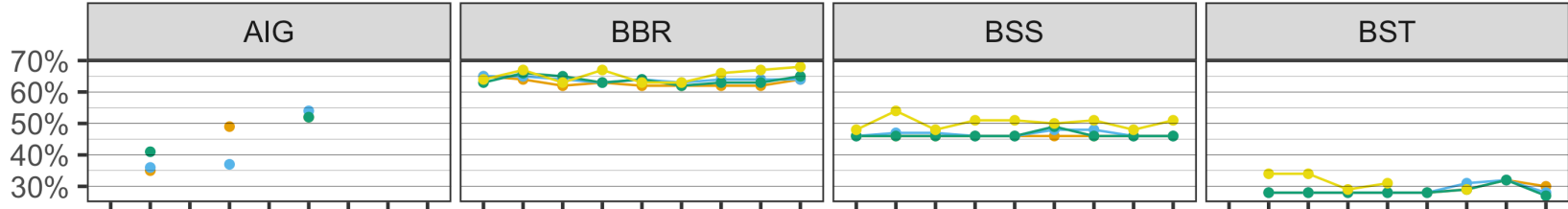


Fleet Income Statement

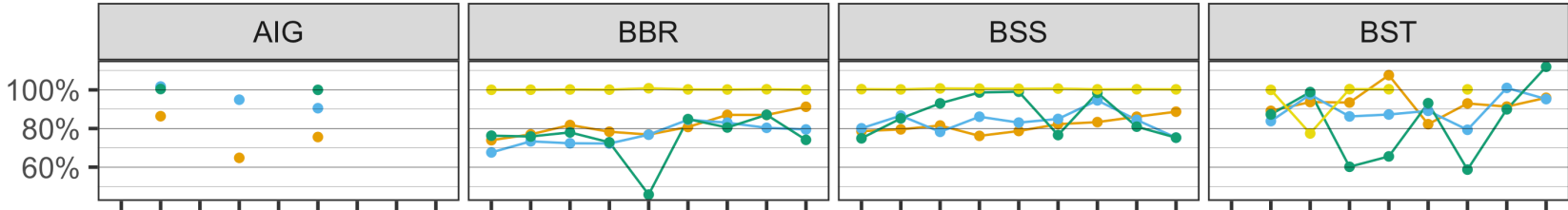


IFQ Lease Activity and Rates

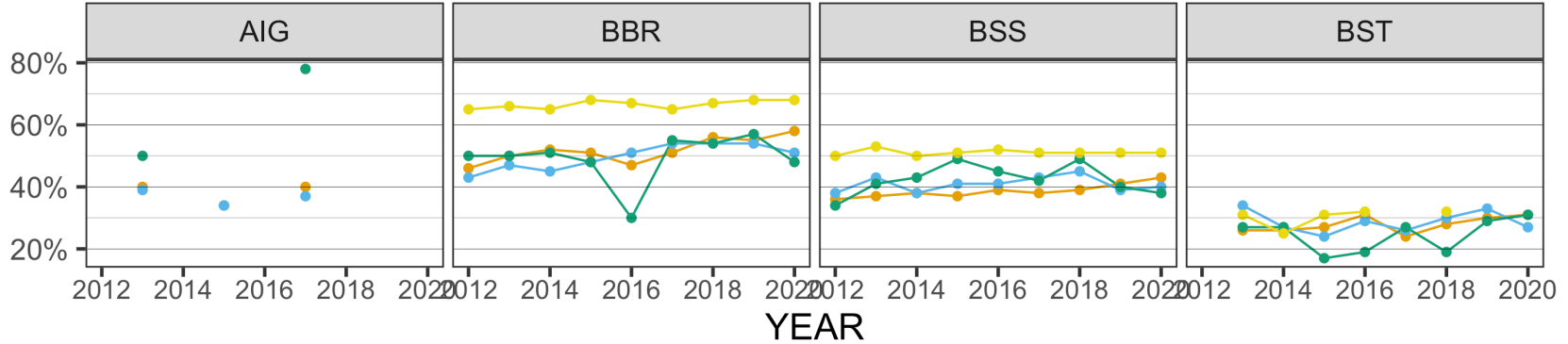
Average lease rate (lease price as % of ex-vessel price), vessel median



Lease volume as % of pounds landed by quota type, weighted mean

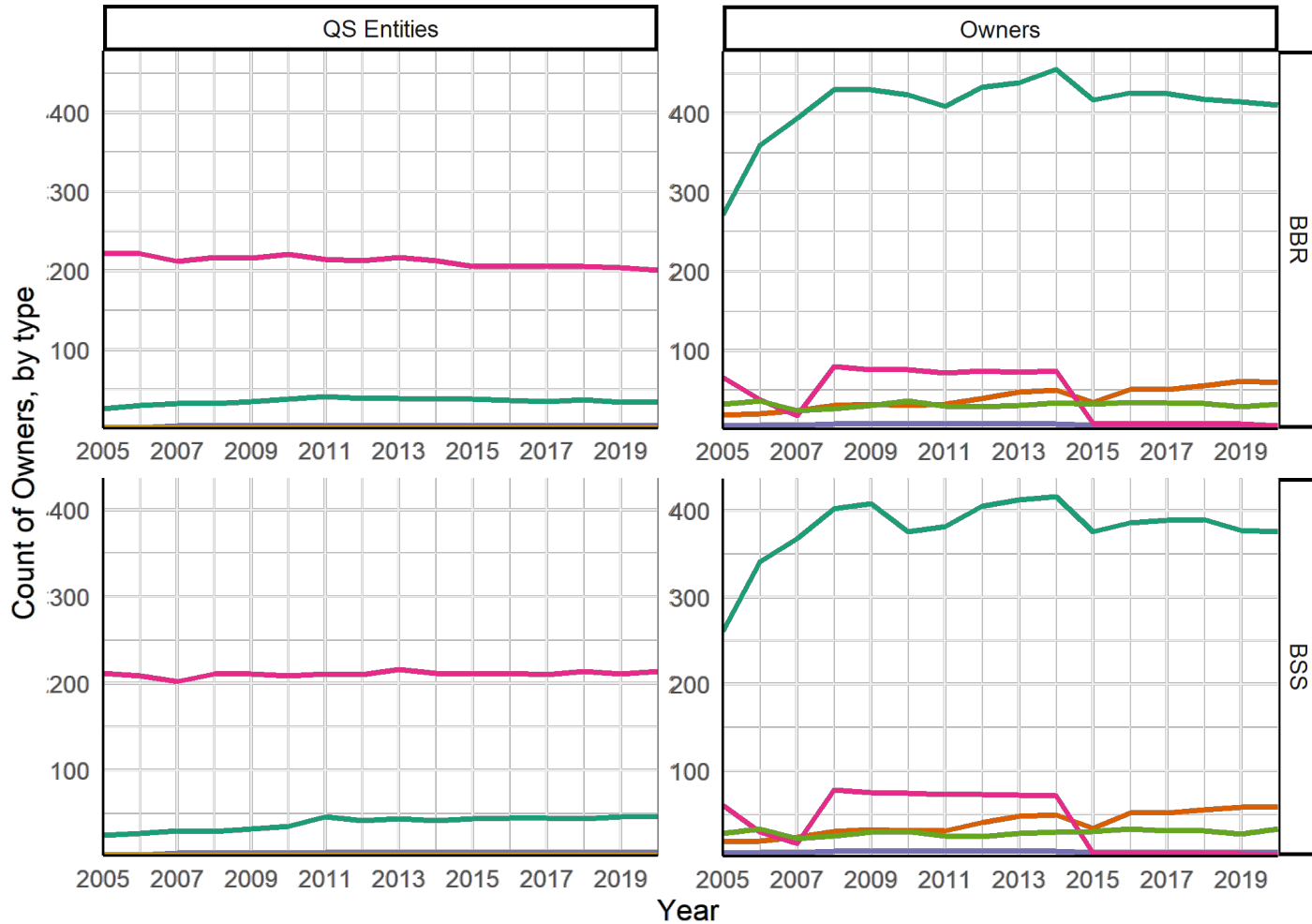


Lease cost as % of ex-vessel gross by quota type, weighted mean



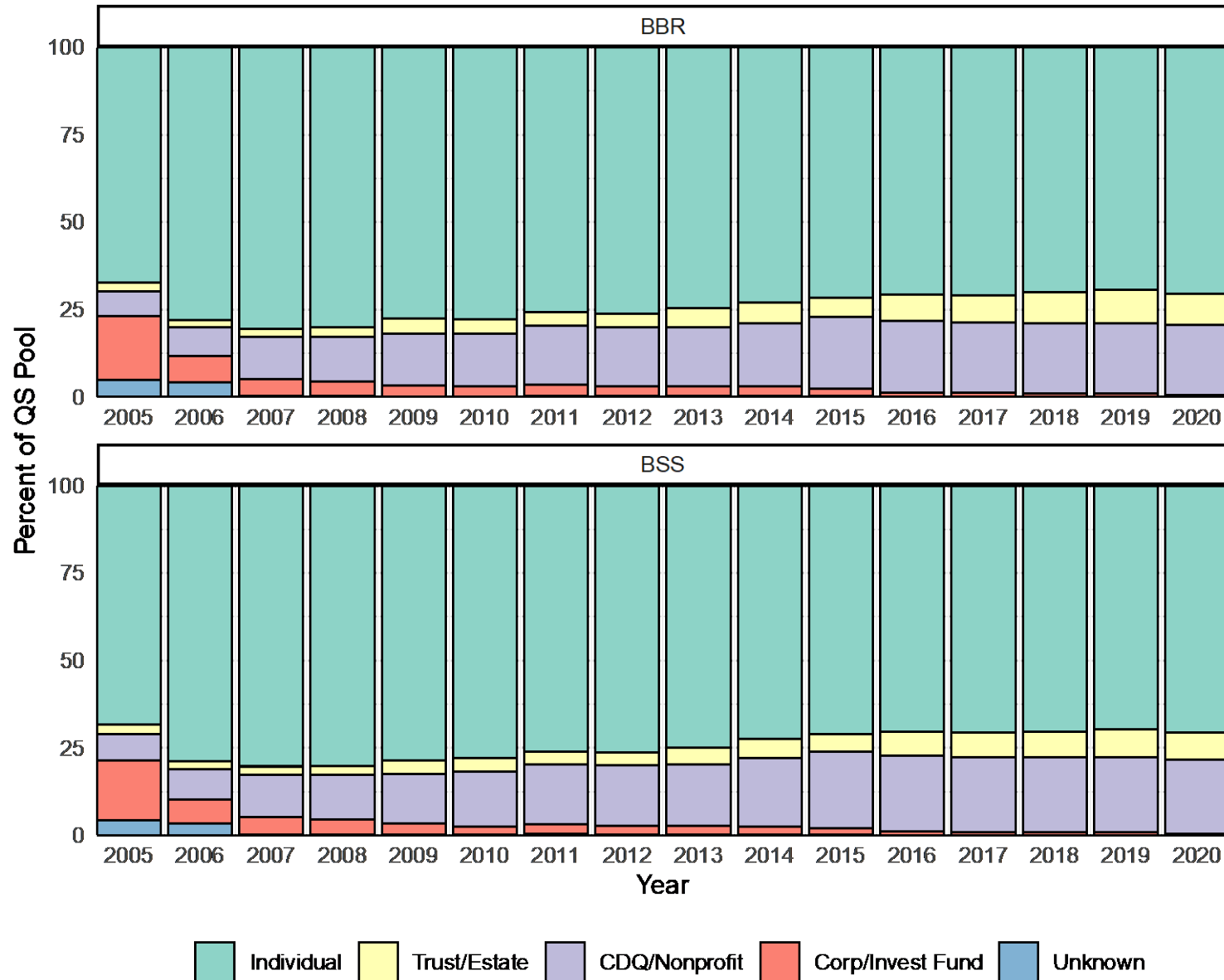
Quota Type — CVO A — CVO B + CPO — CVC + CPC — CDQ + ACA

CVO/CPO QS Holdings Decomposition

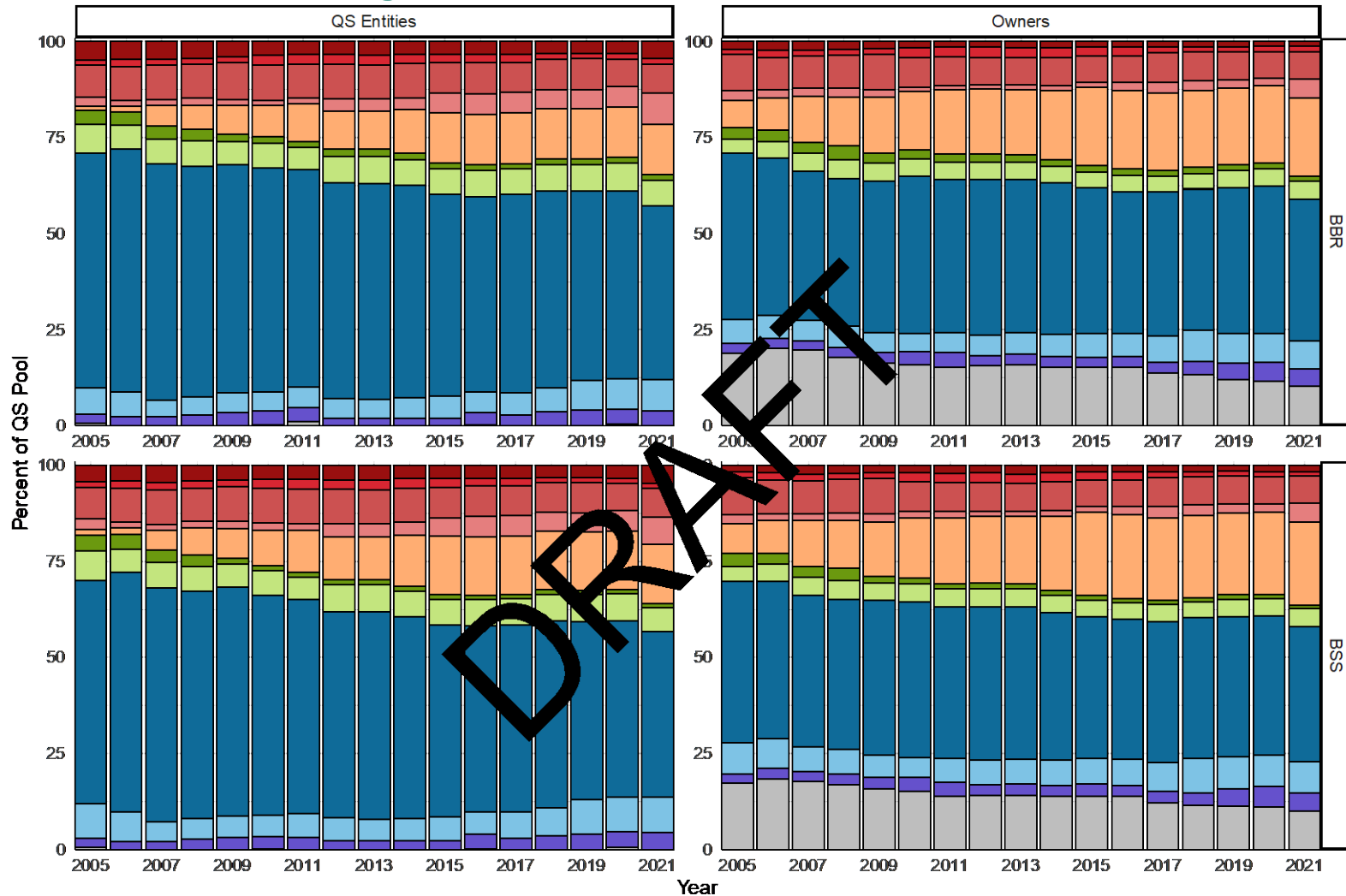


- Individual CDQ/Nonprofit Unknown
- Trust/Estate Corp/Invest Fund

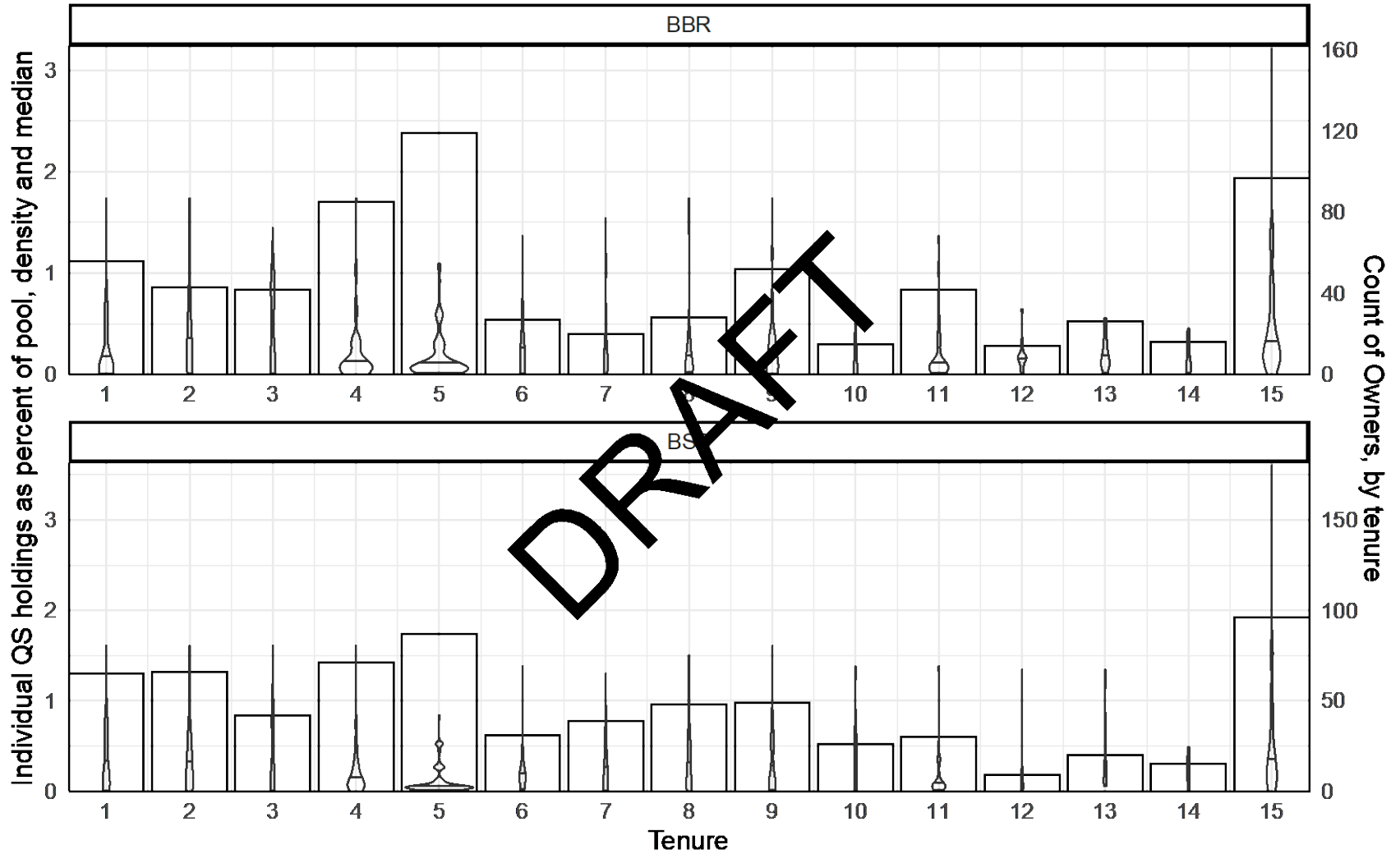
CVO/CPO QS Holdings Decomposition



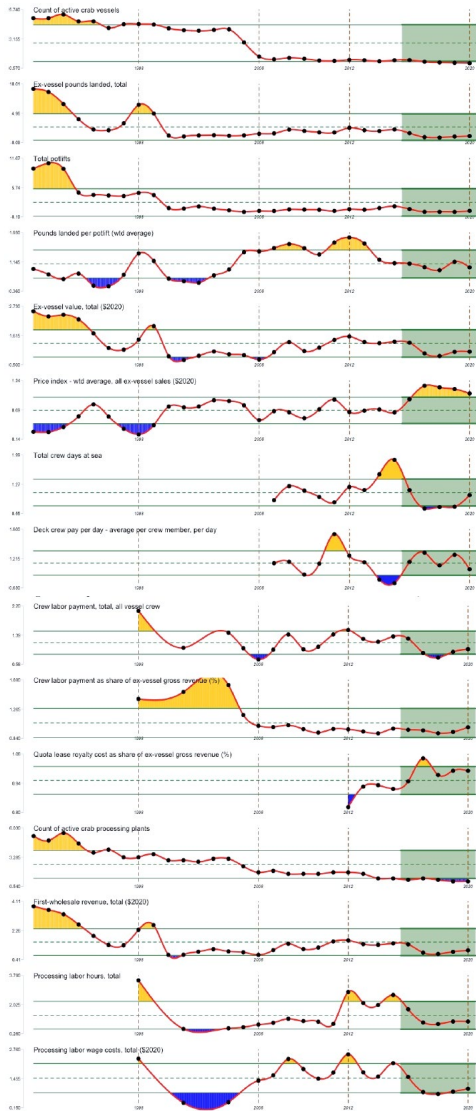
CVO/CPO QS Holdings Decomposition: Community



CVO/CPO QS Holdings Decomposition: Tenure



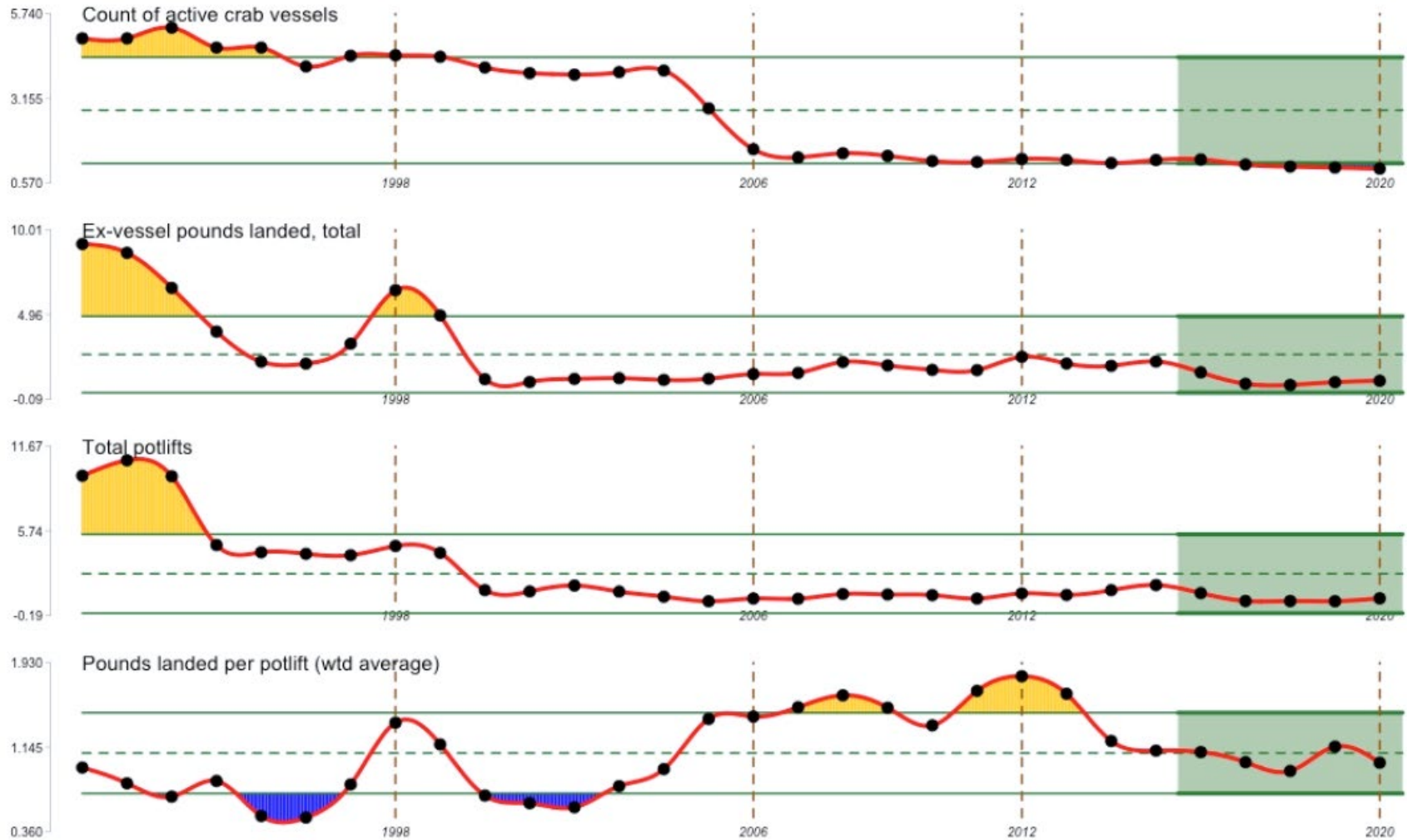
Report card metrics



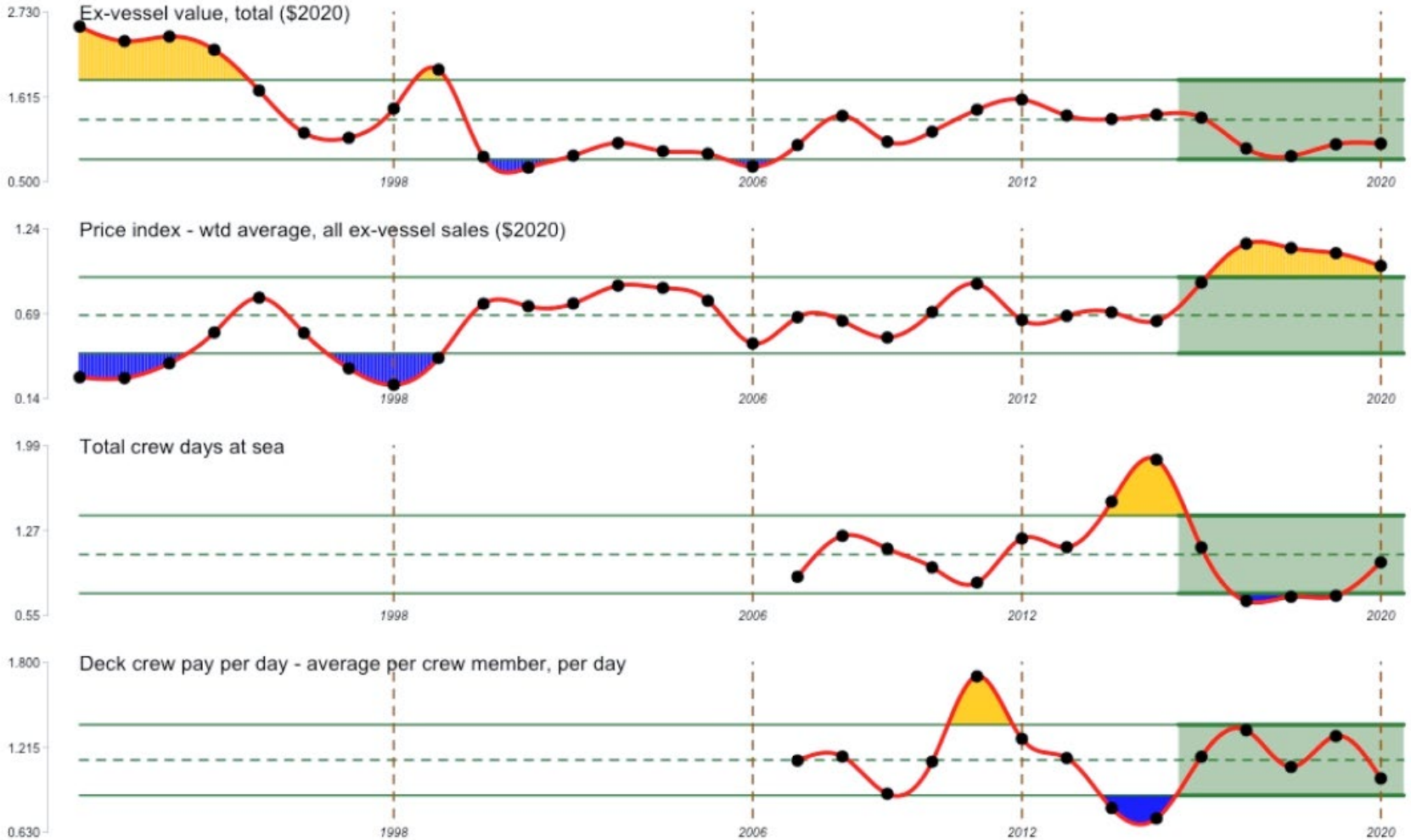
All metrics normalized to 2020 base-year value

- Count of active crab vessels
- Ex-vessel pounds landed, total
- Total potlifts
- Pounds landed per potlift - weighted average
- Ex-vessel value, total (\$2020)
- Price index - weighted average, all ex-vessel sales (\$2020)
- Total crew days at sea
- Deck crew pay per day - average per crew member, per day
- Crew labor payment, total, all vessel crew
- Crew labor payment as share of ex-vessel gross revenue (%)
- Quota lease royalty cost as share of ex-vessel gross revenue (%)
- Count of active crab processing plants
- First-wholesale revenue, total (\$2020)
- Processing labor hours, total
- Processing labor wage costs, total (\$2020)

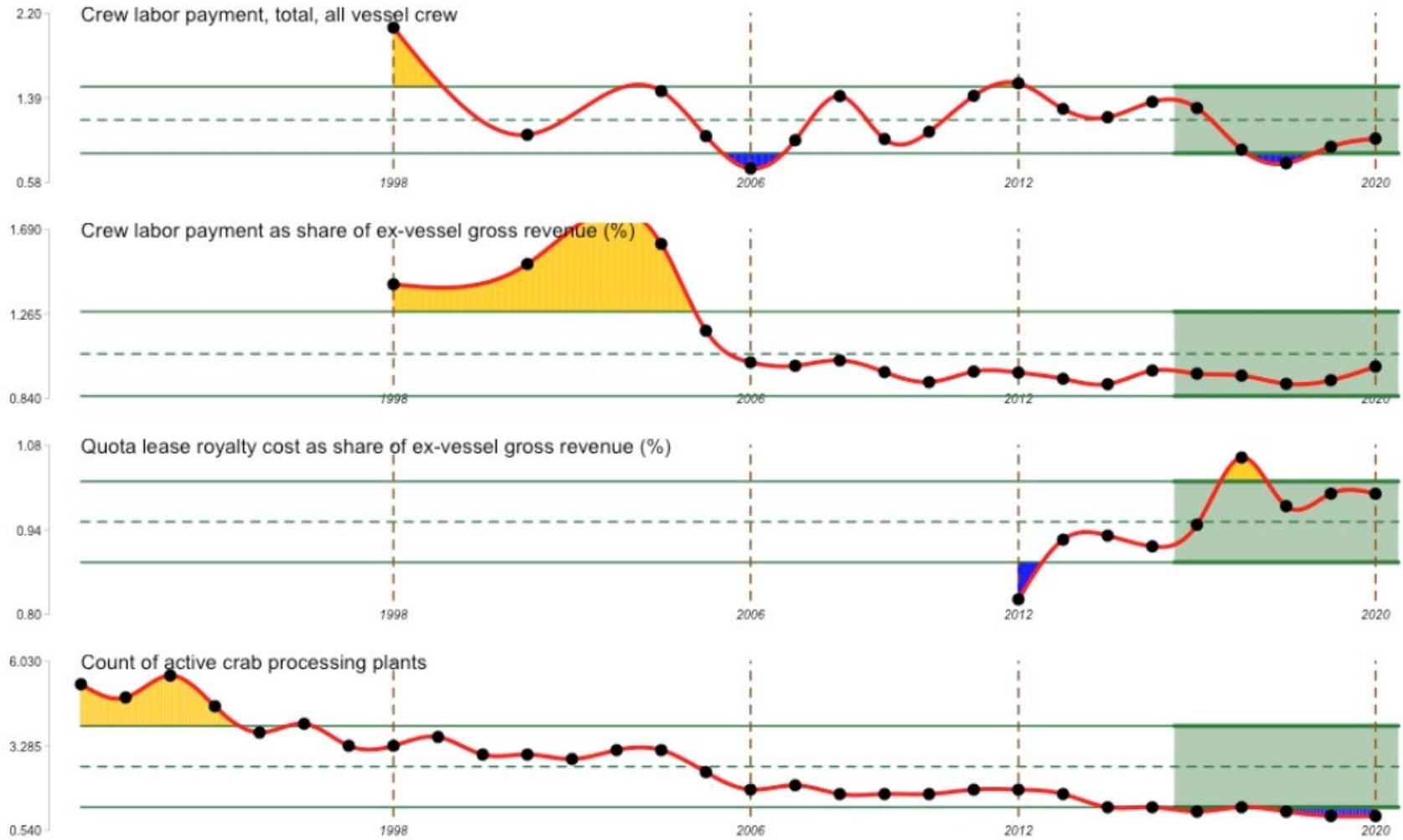
Report card metrics



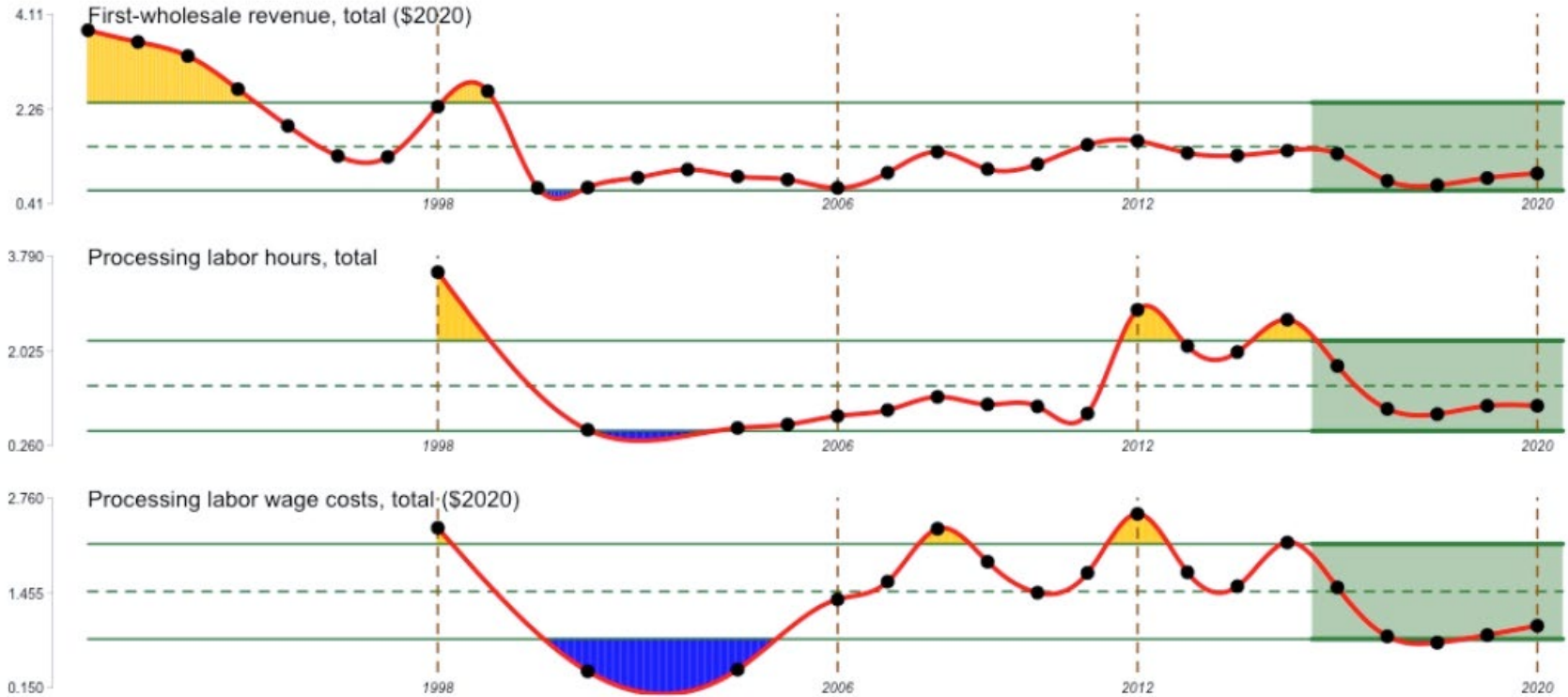
Report card metrics



Report card metrics



Report card metrics



Discussion

Priorities for 2022 SAFE:

- Migrate production to RMarkdown
- Standardize presentation and improve consistency with Groundfish Econ SAFE
- Price forecasts & current-year estimates
- Council EDR Review
- Prepare for CR Program Review support (2023)