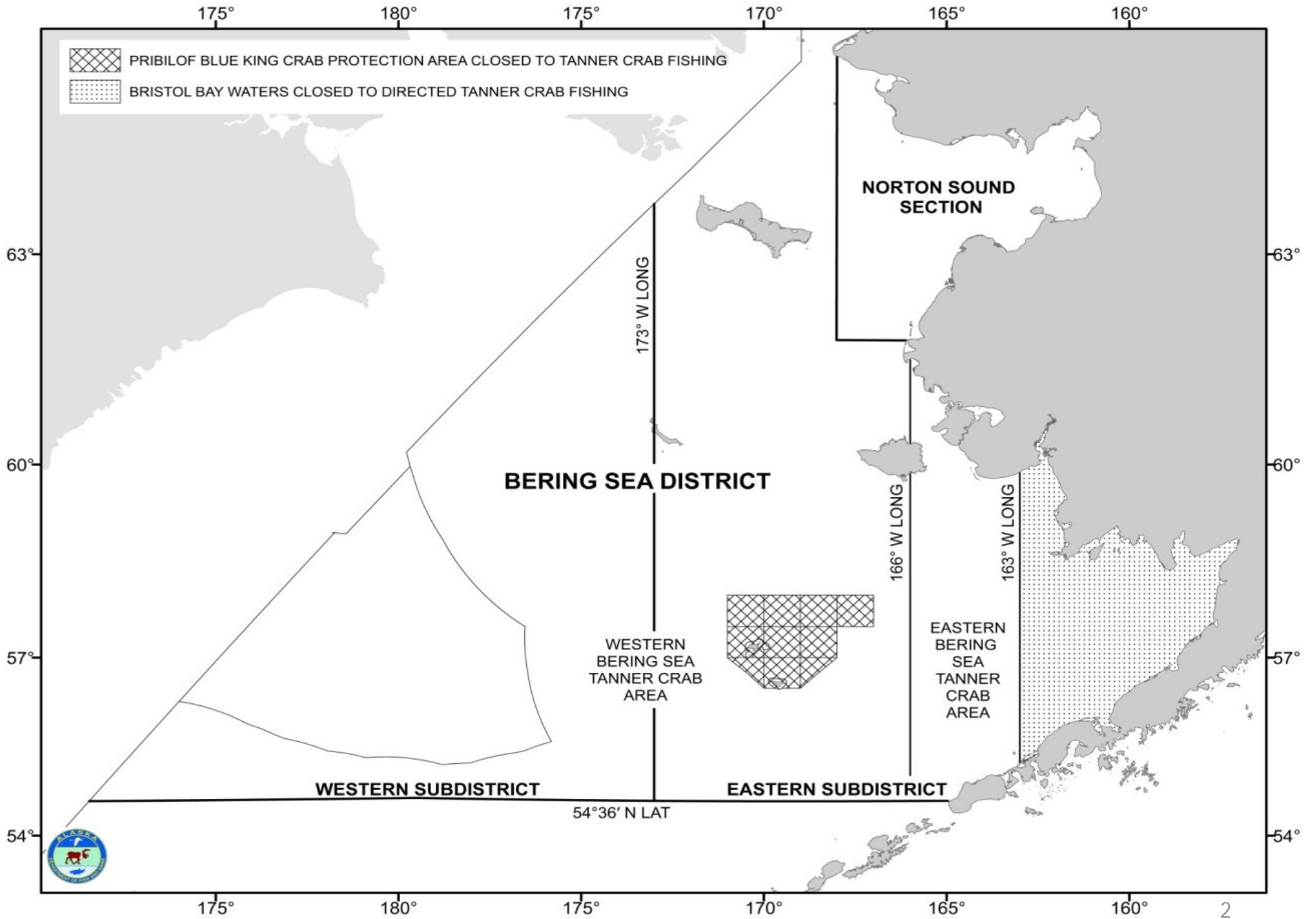


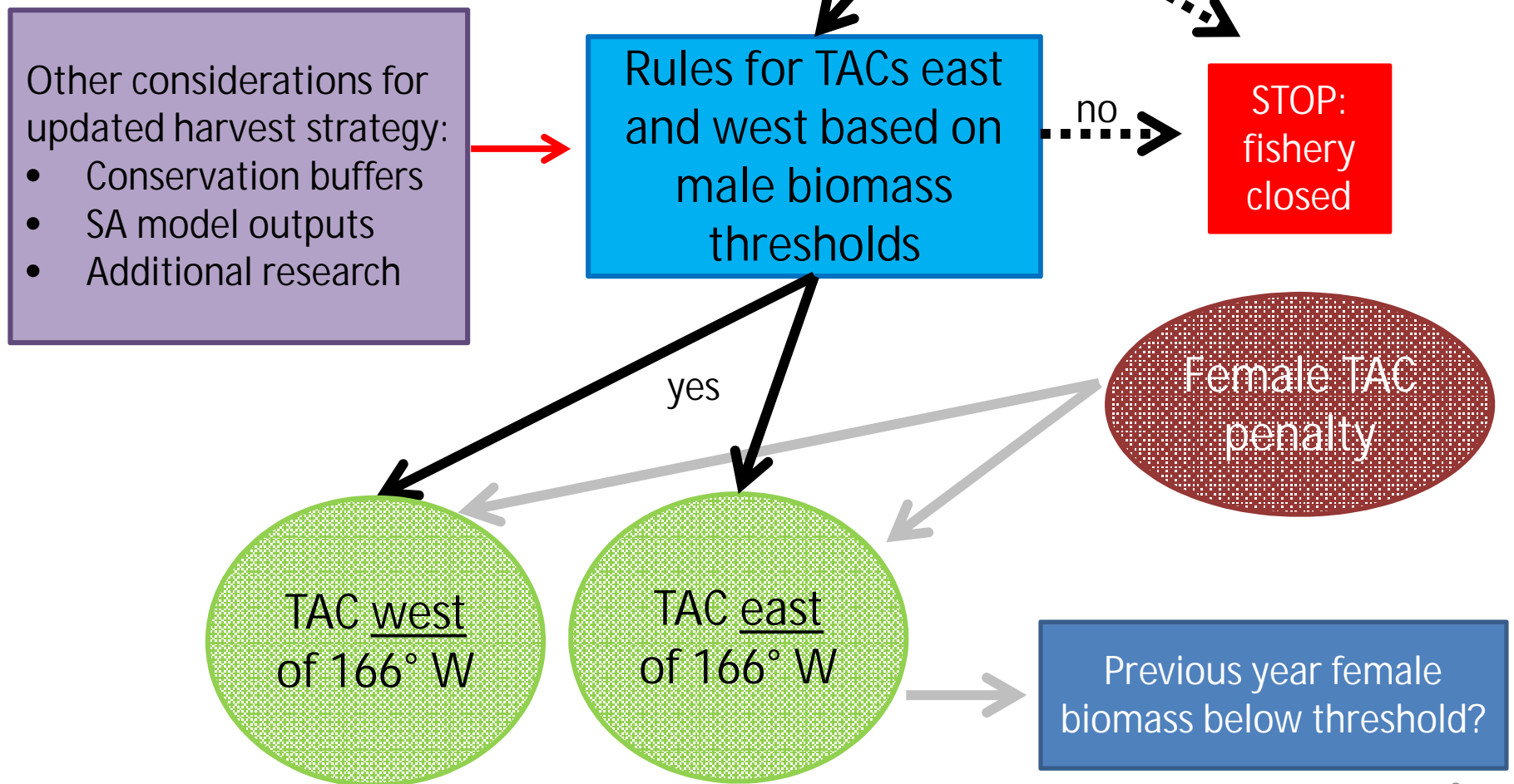
Bering Sea District *C. bairdi* Tanner crab harvest strategy review update

Benjamin Daly
Alaska Department of Fish and Game
Westward Region

Crab Plan Team Meeting
Juneau, AK
May 2-5, 2017



State Tanner crab Harvest Strategy Core Elements



Historical Timeline

- Mid-August: 2016 Survey results disseminated
- Sept 6: Emergency petition was submitted by Alaska Bering Sea Crabbers to amend language in the harvest strategy, to lower the female threshold and allow a fishery opening
- Oct 10: 2016/17 Tanner fishery closed by state because 2016 mature female biomass estimate was below threshold (40% of 1975-2010 average)

Historical Timeline

- Oct: Petition submitted to the BOF at work session
 - BOF developed a board generated proposal to amend the harvest strategy by removing:
 - female threshold, precautionary TAC penalty, fishery east of 166W
- Jan 2017 BOF meeting: proposal failed
 - ADF&G tasked with presenting framework for harvest strategy updates that could be implemented prior to the 2017/18 season
- March BOF meeting: ADF&G presented options for analysis
 - BOF developed a board generated proposal to direct state to conduct analysis
 - May 17-18: Special meeting to present analysis

Elements Tasked for Review

- A. Criteria used to determine mature female Tanner crab (female size-at-maturity);
- B. Area used to estimate biomass expanded to consider area west of 173° W. long. and other surveyed areas where biomass estimates are consistently available and areas closed to commercial crab fishing;
- C. Years used to estimate long-term average mature female Tanner crab biomass;
- D. Provision that TAC is reduced 50% in any year succeeding a year in which the mature female Tanner crab biomass falls below 40% of its long-term average.

Other Elements of Interest

- E. Alternatives to a single open/close threshold (i.e., alternatives to the on/off switch to facilitate flexibility)
- F. Male threshold – consider upper male threshold to determine harvestable surplus

Involvement

Harvest strategy review team

- ADF&G biologists and analysts
- Consultation with NMFS crab scientists
- Industry representatives
 - BSFRF (Scott Goodman)
 - Ad Hoc Tanner crab group



Progress

- Analysis is close to being complete
- Elements A-F have been addressed
- BOF will make decisions about amendments to the language in the state regulations based on analysis results at May meeting
- If a revised harvest strategy adopted by the BOF, it should be in place for 2017/18 season

Questions?

