

**NOAA  
FISHERIES**

**Alaska  
Fisheries  
Science  
Center**

# **Economic Status of the Groundfish Fisheries off Alaska, 2021**

Presented by:

Brian Garber-Yonts  
AFSC Economics and Social  
Sciences Research Program (ESSRP)

Sept. 20, 2022



**NOAA**  
**FISHERIES**

# Contributors

Anna Abelman (AKFIN) - EconSAFE production lead [anna.abelman@noaa.gov](mailto:anna.abelman@noaa.gov)

Jean Lee (AKFIN) - EconSAFE data manager [jean.lee@noaa.gov](mailto:jean.lee@noaa.gov)

Ben Fissel (NMFS/ST)

ESSR Program

# Economic Status Report, 2021: Core Content of the Nov. Draft

- Executive Summary: 2021 highlights
  - Report Card Metrics
  - Plan Team Reports (forthcoming)
- Overview of the Economic Data Tables
- Economic Data Tables
  - All Alaska summary Tables (1-9)
  - BSAI data Tables (10-25)
  - GOA data Tables (26-41)
  - Halibut data Tables (H1-H10).

Tables primarily cover: Retained catch, ex-vessel value and prices, first-wholesale production and prices, vessel counts, and fishing and crew weeks.

# Economic Status Report, 2021: Additional Final Draft Content (Nov.)

- Wholesale and ex-vessel price projections
- Market Profiles (update planned)
- Amendment 80 Economic Data Report
- Gulf Trawl Economic Data Report
- Year-to-date catches and value estimates

Completion of November Draft Report delayed –  
completion is expected by end of Plan Team meeting

# Economic Performance Report (EPR) and Ecosystem and Socioeconomic Profiles

These documents provide stock specific socio-economic information to stock assessment authors

- **BSAI**: pollock, *Pacific cod (ESP)*, flatfish complex (yellowfin sole, rock sole, flathead, arrowtooth) , rockfish (Pac. ocean perch, northern rockfish), Atka mackerel.
- **GOA**: *pollock (ESP)*, *Pacific cod (ESP)*, flatfish (arrowtooth), rockfish (Pac. ocean perch, northern rockfish).
- Combined: *sablefish (ESP)*.

# Where to find the data I need?

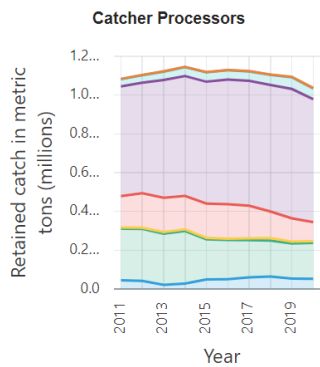
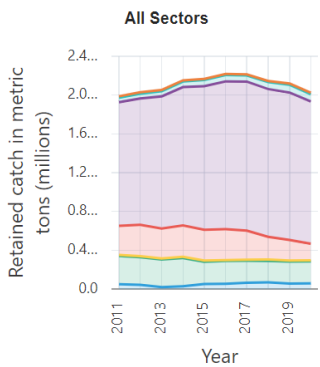
<https://reports.psmfc.org/akfin/f?p=501:2001>

About SAFE Highlights Available Data



About SAFE Highlights Available Data

About SAFE Highlights Available Data



Atka Mackerel Pollock  
Flatfish Rockfish  
Other Groundfish Sablefish

Atka Mackerel Pollock  
Flatfish Rockfish  
Other Groundfish Sablefish

- + Catch and discards
- + Ex-vessel value
- + Wholesale production and value
- + Effort
- + Fleets

Atka Mackerel Pollock  
Flatfish Rockfish  
Other Groundfish Sablefish

# AKFIN/AFSC Human Dimensions of Fisheries Data Explorer

<https://reports.psmfc.org/akfin/f?p=501:2000>

## Economic Status Reports

- Groundfish Econ SAFE
- Crab Econ SAFE

## Fishing Community information

- Community Profiles
- Community Landings dashboard
- Social Indicators Toolbox
- ACEPO dashboard
- A Way of Life storymap

## Other resources

- Catch Share performance metrics
- 10 MRSAM regional economic impact modeling Toolbox



### About the Human Dimensions Data Explorer

The Human Dimensions Data Explorer provides access to data, data visualizations, and other tools for understanding the economic and sociocultural dimensions of Alaska fisheries. These resources have been developed by, in or in collaboration with, the Alaska Fisheries Science Center Economics and Social Science Research Program (ESSRP), which collects and analyzes economic and sociocultural data to support the conservation and management of Alaska marine resources. ESSRP's research foci include seafood markets and trade, recreational fisheries, and non-market valuation, regional economic modeling, catch share programs and quota markets, economic performance indicators, and fishing behavior models, among others.

### Economic Status Reports (SAFE)

Economic Status Reports are published with the annual **Stock Assessment and Fishery Evaluation (SAFE) Reports** for federally-managed groundfish and crab stocks in the North Pacific. The Economic SAFEs provide social and economic context to fisheries managers to support regulatory decision making and the evaluation of management measures such as catch share programs.

### Groundfish Economic SAFE

Annual report on the economic performance of the federally-managed groundfish fisheries in the Gulf of Alaska and the Bering Sea/Aleutian Islands, including statistics on catch, ex-vessel and first wholesale production and value and effort.

### BSAI Crab Economic SAFE

Annual report on the economic performance of the federally-managed king and Tanner crab fisheries of the Bering Sea and Aleutian Islands, including statistics on production and revenue in the harvesting and processing sectors, labor employment, demographics, and income and quota holdings, leasing, and sales.

### Fishing Communities

The Economic and Social Sciences Research Program conducts research on Alaska communities in order to examine the social and economic impacts of federal fishery policies and regulations:

The **Magnuson-Stevens Fishery Conservation and Management Act (MSA)** defines a fishing community as a community which is substantially dependent on or substantially engaged in the harvest or processing of fishery resources to meet social and economic needs, and includes fishing vessel owners, operators, and crew and United States fish processors that are based in such community. As mandated under MSA National Standard B, those policies and regulations shall take into account the importance of fishery resources to fishing communities in order to (1) provide for the sustained participation of such communities; and (2) to the extent practicable, minimize adverse economic impacts on such communities.

**Executive Order 12898** additionally mandates that each federal agency, to the greatest extent practicable and permitted by law, shall make achieving environmental justice part of its mission by identifying and addressing the disproportionately high and adverse human health or environmental effects of their actions on minority and low-income populations.

### Community Profiles for North Pacific Fisheries

In-depth profiles of the 196 Alaska communities most involved in Alaska and North Pacific fisheries, describing the historic, demographic, cultural, and economic context for each community's involvement.

### Community Landings Dashboard

A mapping and graphing tool for exploring communities where catch from the commercial fisheries of the North Pacific is landed.

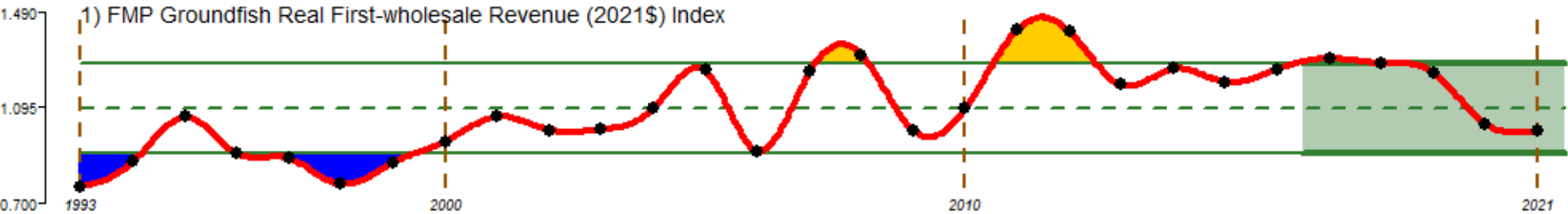
This application is available to approved users of confidential fisheries data with institutional ArcGIS accounts. Please contact [jean.lord@noaa.gov](mailto:jean.lord@noaa.gov) to inquire about access.

# Status and Trends

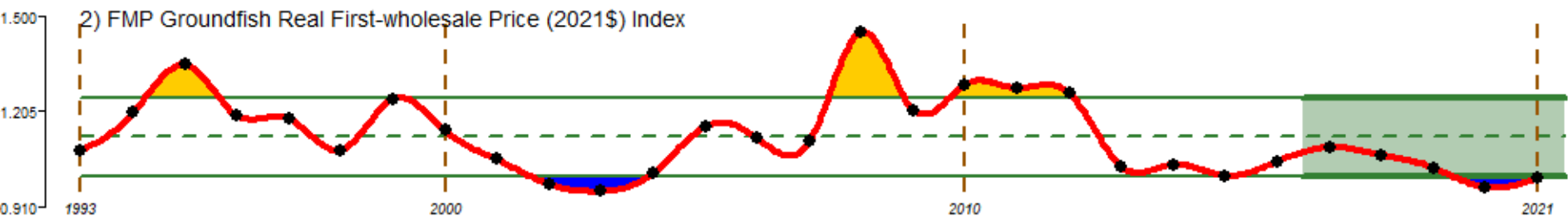


# Report Card Indices

## FMP Groundfish real first-wholesale revenue (2021\$) index

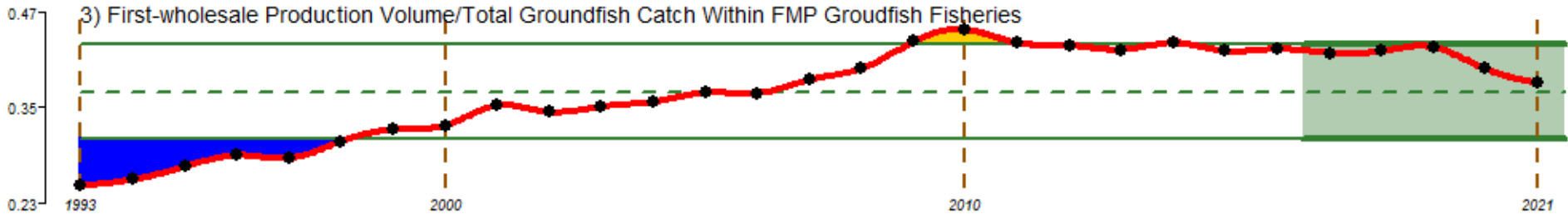


## FMP Groundfish real first-wholesale price (2021\$) index

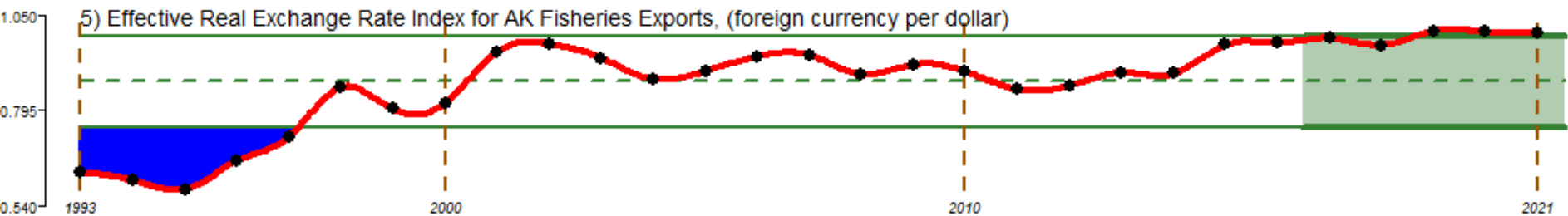


# Report Card Indices

## FMP Groundfish Aggregate Recovery Rate

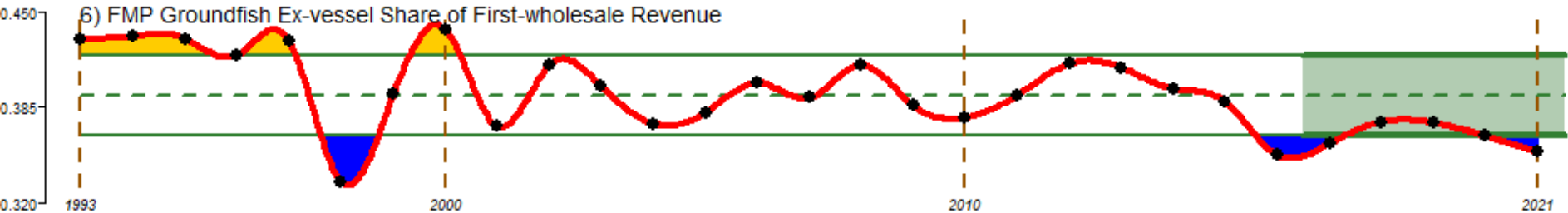


## Effective real exchange rate index for AK fisheries exports (foreign currency per dollar)

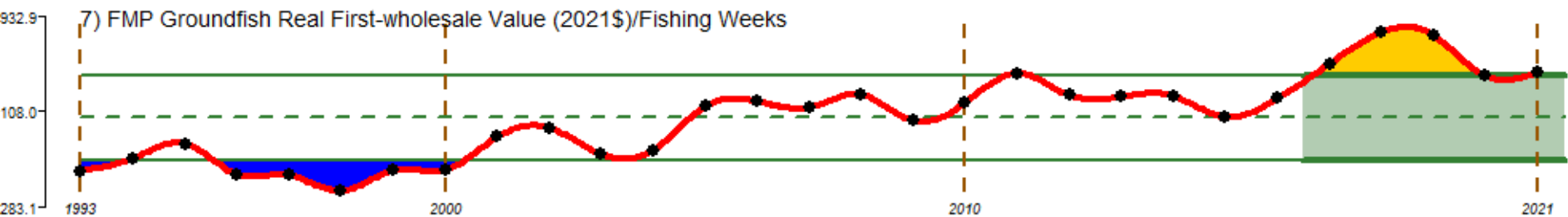


# Report Card Indices

## FMP groundfish ex-vessel share of first-wholesale revenue

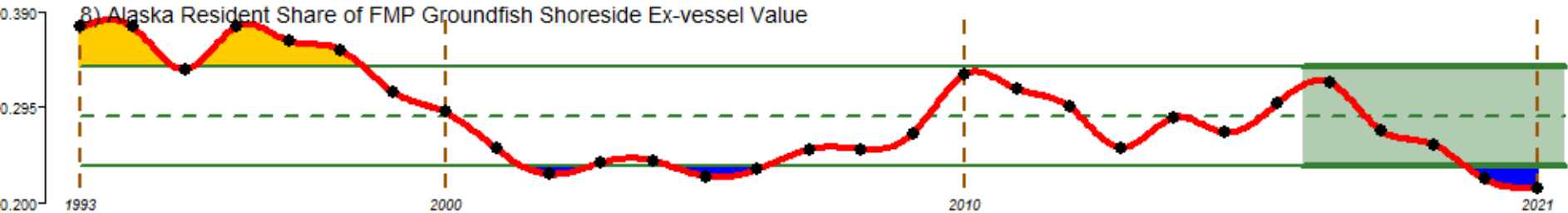


## FMP groundfish first-wholesale value (\$2021) per fishing week

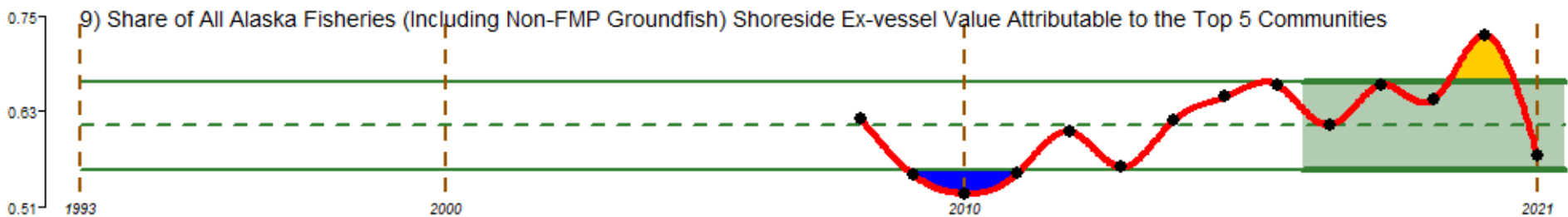


# Report Card Indices

## Alaska resident share of FMP groundfish shoreside ex-vessel value

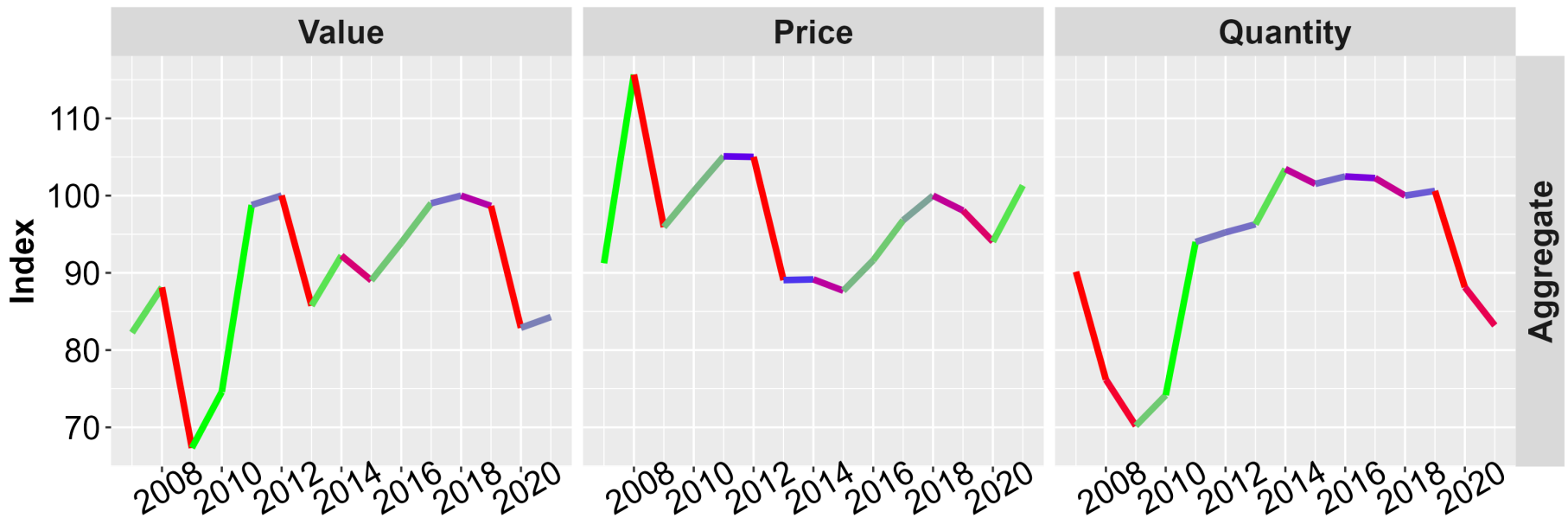


## Share of all Alaska fisheries shoreside ex-vessel value attributable to the top 5 ports



# Alaska's Groundfish Fisheries in 2021

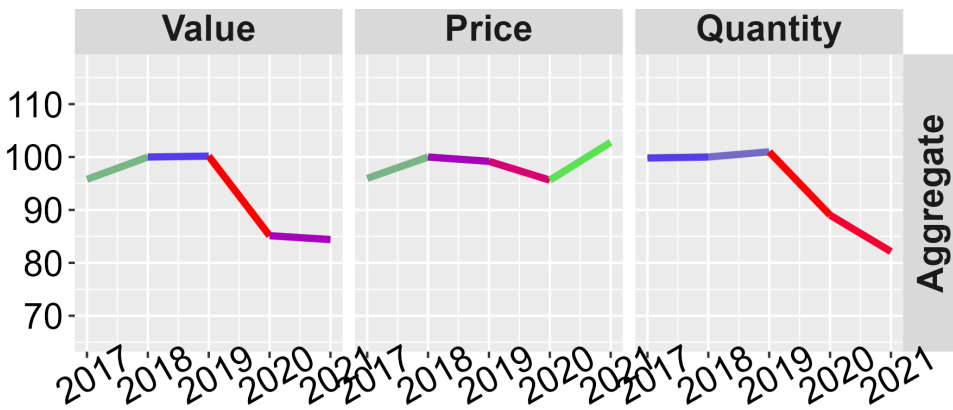
## Alaska First Wholesale Economic Indices



In the aggregate:

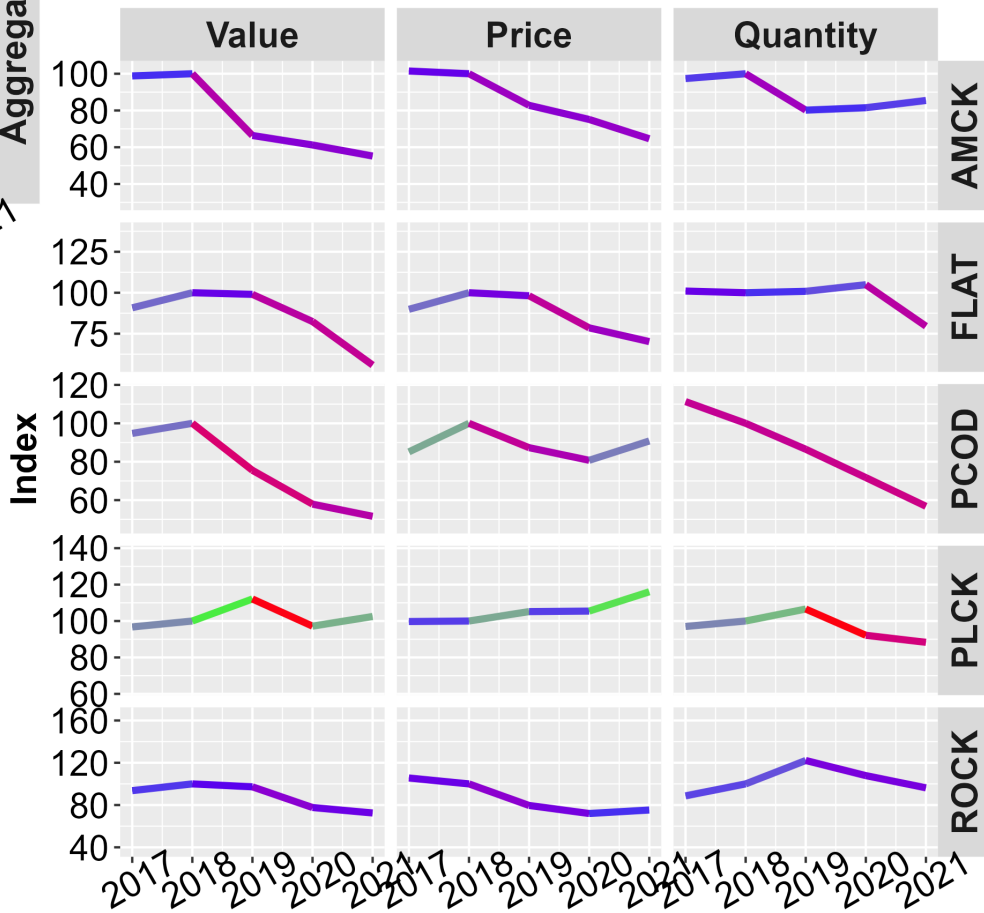
The change in value was the result of increasing prices which offset decreases in volume

# BSAI First Wholesale Economic Indices



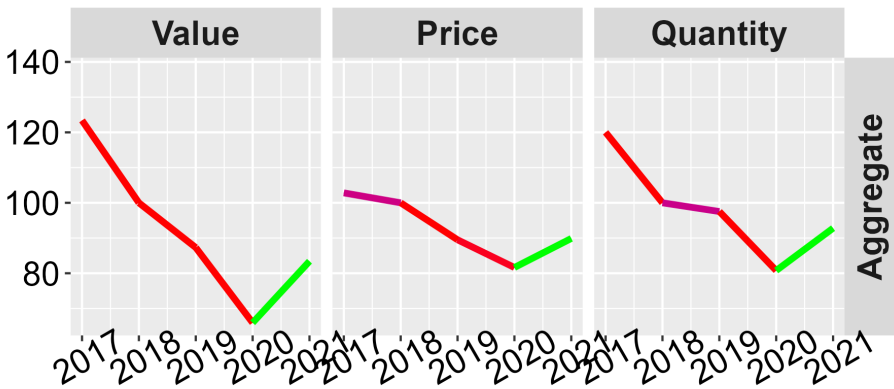
## Species

- Value increased:
  - Pollock
  - Sablefish
- Value stable or decreasing
  - Atka
  - Flatfish
  - Pacific cod
  - Rockfish



(yr-on-yr % change)\*(share weight) -0.1 0.03 0 0.03 0.1

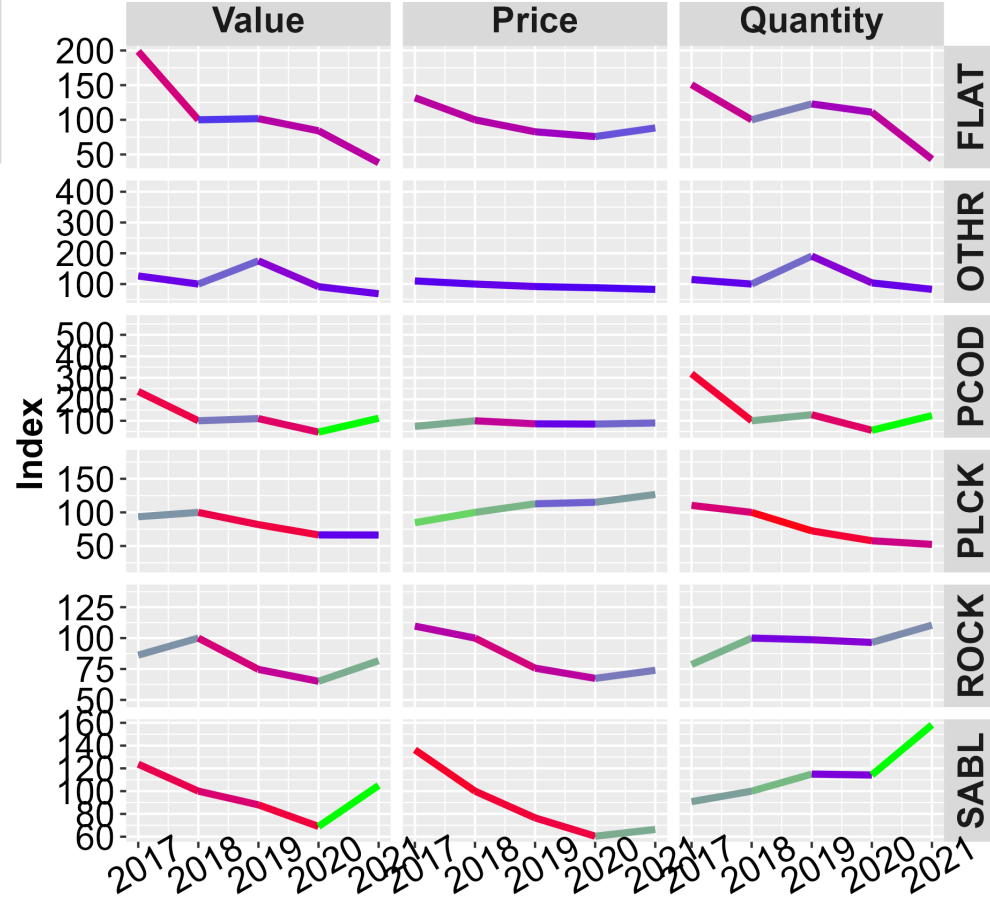
Indices are nominal (not adjusted for inflation)



# Species

- Value increased:
  - Sablefish
  - Pacific cod
  - Rockfish
- Value stable or decreased:
  - Flatfish
  - Pollock
  - Other species

# GOA First Wholesale Economic Indices



(yr-on-yr % change)\*(share weight) -0.1 -0.03 0 0.03 0.1

Indices are nominal (not adjusted for inflation)



# Economic Status Report, 2021



**NOAA**  
**FISHERIES**

The Economic Status Report serves many purposes.  
Among them is to provide information to the Plan Team.

- We invite feedback -- [michael.d.smith@noaa.gov](mailto:michael.d.smith@noaa.gov)