

## Status of Emergency Rules and Other Actions

November 30, 2001

| Emergency Rules and Other Actions Status: <b>Since October 2001 Council Meeting</b>                                       | Date of Council Action                | Transmittal Date of Action to NMFS Headquarters | Final Action Published in <u>Federal Register</u>                              |
|---|---------------------------------------|---|--|
| <b>Emergency Rule Actions</b>   |                                       |   |  |
| Emergency rule to implement 2002 Steller sea lion protection measures and groundfish harvest specifications               | <b>October 2001 and December 2001</b> |   |  |
| <b>Other Actions</b>  |                                       |   |  |
| Notice of availability of draft SEIS on SSL protection measures. <b><u>Comment period ends October 15, 2001</u></b>       | NMFS                                  |   | August 31, 2001<br>66 FR 45984   |
| Notice of availability of <b>Final</b> SEIS on SSL protection measures  | NMFS                                  |   | <b>November 23, 2001</b><br><b>66 FR 58734</b><br><b>EOC December 24, 2001</b> |
| Notice of intent and scoping of EIS on the BSAI crab FMP. <b><u>Comment period ends November 16, 2001</u></b>             | NMFS                                  |   | September 20, 2001<br>66 FR 48410  |
| Notice of intent and scoping of EIS on the BSAI crab FMP - <b><u>extension of comment period to December 10, 2001</u></b> | NMFS                                  |   | <b>November 30, 2001</b><br><b>66 FR 59771</b>                                 |
| Notice of intent to revise Groundfish Fisheries draft programmatic SEIS   |                                       |   | <b>November 27, 2001</b><br><b>66 FR 59228</b>                                 |

## Status of FMP Amendments

November 30, 2001

| FMP Amendment<br>Status: <u>Actions Since<br/>October 2001<br/>Council Meeting</u>                 | Date of<br>Council<br>Action                 | Start<br>Regional<br>Review   | Transmittal<br>Date of<br>proposal to<br>NMFS HQ for<br>Review | Proposed FMP<br>Amendment<br>Notice of<br>Availability<br>Published                                       | Proposed Rule<br>Published in<br>Federal<br>Register  | Final Rule<br>Published in<br>Federal<br>Register                                    |
|--|--|---|--|---|---|--|
| Salmon Amend. 6<br>Overfishing definition<br><u>SOC decision date<br/>January 3, 2002</u>          | June 1998<br>June 1999<br>June 2001          | 6-29-2001   | September 12,<br>2001  | <u>10-5-2001</u><br><u>66 FR 51001</u><br><u>Comment</u><br><u>period ends</u><br><u>Dec. 4, 2001</u>     | <i>No<br/>implementing<br/>rule</i>   |  |
| Amends. 48/48:<br>Reform TAC<br>specification process  | Reconsider<br>scheduled<br>for early<br>2002 |   |  |   |   |  |
| Amends. 54/54: IFQ<br>program changes<br><u>Approved</u><br><u>Oct. 24, 2001</u>                   | October<br>1998                              | 10-1-1999   | July 16, 2001  | July 24, 2001<br>66 FR 38412<br>Comment<br>period ends<br>Sep. 24, 2001                                   | <u>Oct 12, 2001</u><br><u>66 FR 52090</u><br><u>Comment</u><br><u>period ends</u><br><u>Nov. 26, 2001</u> |  |
| Amends. 60/58/10:<br>LLP 1, crab recent<br>participation, etc.<br>Approved April 18,<br>2001       | October<br>1998; April<br>1999               | 7-28-1999   | Jan. 2, 2001   | Jan. 17, 2001<br>66 FR 3976<br>Comment<br>period ended<br>Mar 19, 2001                                    | Mar 30, 2001<br>66 FR 17397<br>Comment<br>period ended<br>April 30, 2001                                  | <u>Sep 24, 2001</u><br><u>66 FR 48813</u><br><u>effective</u><br><u>Oct 24, 2001</u> |
| Amend. 60 GOA:<br>Cook Inlet bottom<br>trawl ban   | Sept 2000                                    | <i>Analysis<br/>rec. from<br/>Council<br/>staff<br/>3-19-2001</i>                             |  |   |   |  |
| Amends. 61/61/13/8:<br>AFA management of<br>co-ops and sideboards                                  | June 1999<br>June 2000<br>Sep. 2000          | <i>NOA of EIS<br/>published<br/>10-26-2001<br/>comment<br/>period<br/>ending<br/>12-10-01</i> | <u>Nov. 13, 2001</u>   | Nov. 27, 2001<br>66 FR 59225<br>Comment<br>period ends<br>January 28,<br>2002                             | Week of<br>Dec. 3, 2001<br><br>(Date yet to be<br>announced)  |  |
| Amend. 67 BSAI:<br>LLP 2, gear and Pcod<br>endorsements<br><u>Approved</u><br><u>Nov. 14, 2001</u> | April 2000                                   | 3-12-2001   | Aug. 1, 2001   | <u>Aug 15, 2001</u><br><u>66 FR 41833</u><br><u>Comment</u><br><u>period ends Oct.</u><br><u>15, 2001</u> | <u>Oct. 1, 2001</u><br><u>66 FR 49908</u><br><u>Comment</u><br><u>period ends</u><br><u>Nov 15, 2001</u>  |  |
| Amend. 69 BSAI:<br>AFA 1, inshore co-op<br>contracts with CVs<br>outside co-op                     | June 2001                                    | <i>Analysis<br/>received;<br/>PR being<br/>drafted</i>  |  |   |   |  |

**Status of Regulatory Amendments**  
November 30, 2001

| <b>Regulatory Amendment Status:</b><br><u>Actions Since October 2001 Council Meeting</u> | <b>Date of Council Action</b> | <b>Start Regional Review of Proposed Rule</b>  | <b>Transmittal Date of Proposed Rule to NMFS Headquarters</b> | <b>Proposed Rule Published in Federal Register</b>                  | <b>Final Rule Published in Federal Register</b>  |
|--|-------------------------------|--|---|---|--|
| <b>Groundfish Regulations</b>  |                               |  |   |   |  |
| Steller sea lion protection measures for 2002 and beyond                                 | October 2001                  | <i>Draft proposed rule in preparation</i>  |   |   |  |
| Revision of at-sea observer communication system requirements                            | Feb 2000                      | <b>November 30, 2001</b>   |   |   |  |
| Observer omnibus rule  | June 2000                     | Feb. 16, 2001  | <b>Nov. 2, 2001</b>   | <b>Under HQ review</b>  |  |
| Recordkeeping and Reporting rule changes for 2001  | NMFS                          | Aug. 31, 2000  | Nov. 28, 2000   | Aug. 8, 2001<br>66 FR 41664<br>Comment period ended Sept. 7, 2001   | <i>Draft final rule in HQ review</i>   |
| Commercial Operator's Annual Report (COAR)   | June 1999                     | Sept. 16, 1999   | Aug. 3, 2000  | Dec. 14, 2000<br>65 FR 78131;<br>Comment period ended Jan. 16, 2001 | Aug. 20, 2001<br>66 FR 43524<br><u>Correction</u><br><u>Nov. 1, 2001</u><br><u>66 FR 55123</u> |
| Length overall (LOA) definition revision   | NMFS                          | Oct. 15, 2000  | Jan. 25, 2001   | May 25, 2001<br>66 FR 28883<br>Comment period ended June 25, 2001   | <u>Sep. 12, 2001</u><br><u>66 FR 47416</u><br><u>effective</u><br><u>Oct. 12, 2001</u>         |
| DSR full retention and donation rules  | June 1999                     | <i>Analysis received from Council staff 10-25-00; Revised analysis and proposed rule being drafted</i> |   |   |  |
| Revision of IR-IU rules  | February 1999                 |  |   |   |  |

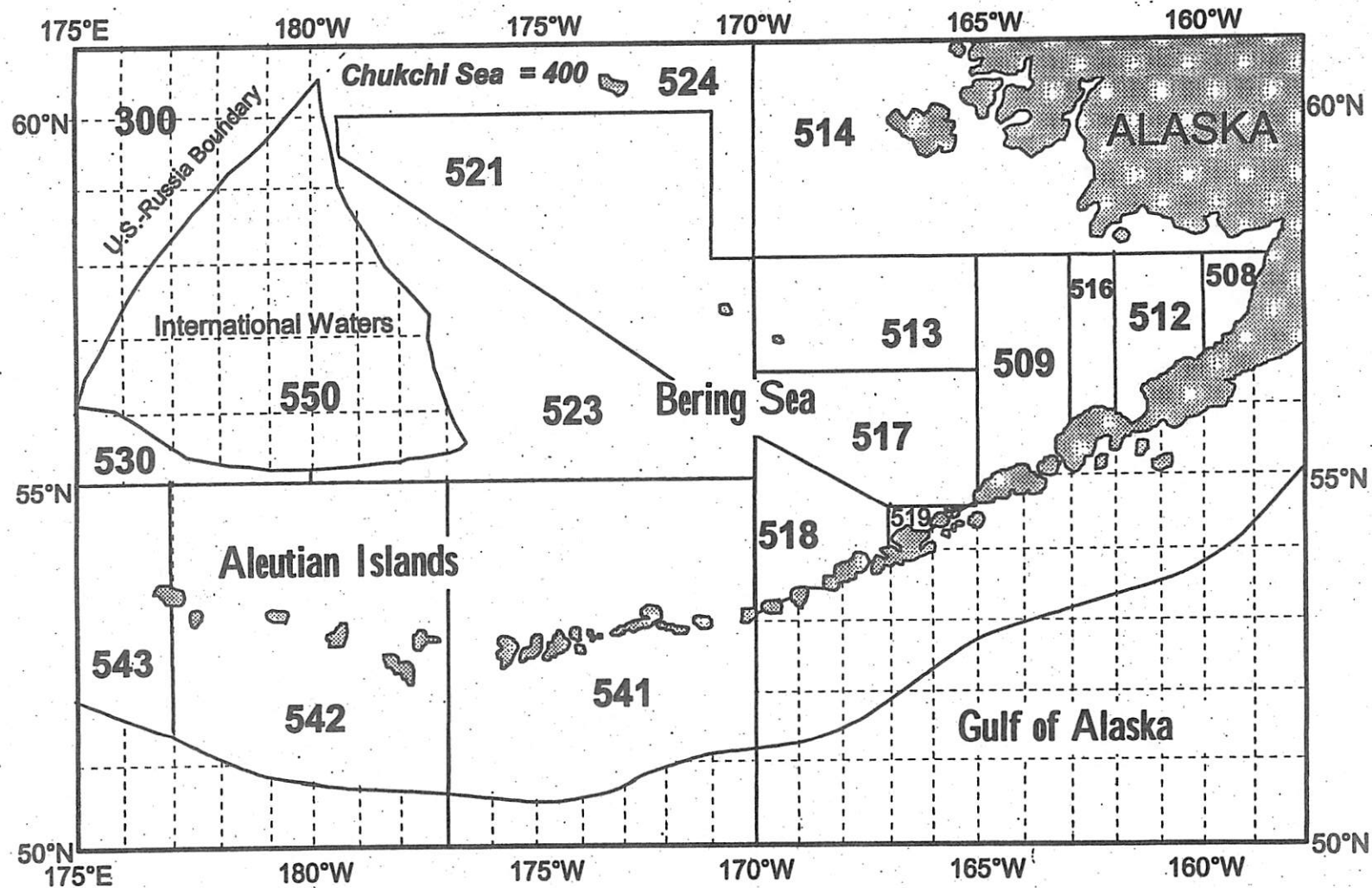
| Regulatory Amendment Status:<br><u>Actions Since October 2001 Council Meeting</u> | Date of Council Action   | Start Regional Review of Proposed Rule   | Transmittal Date of Proposed Rule to NMFS Headquarters | Proposed Rule Published in Federal Register                              | Final Rule Published in Federal Register              |
|---|--|--|--|--|---|
| <b>Halibut Regulations</b>  |  |  |  |  |   |
| Halibut charter boat<br>GHL   | February 2000:<br>December 2000  | Feb. 26, 2001  | <u>Oct. 11, 2001</u>                                   | <u>Under HQ review</u>   |   |
| Halibut charter boat<br>IFQ   | April 2001;<br>October 2001  |  |  |  |   |
| Halibut Subsistence<br>fishing provisions   | October 2000   | <i>9-27-2001;<br/>Revised analysis<br/>received from<br/>Council staff<br/>9-26-2001</i> |  |  |   |
| Halibut 4D/4E issues:<br>trip limits; location of<br>catch                        | October 1998<br><u>December 2001</u><br>- pending<br><u>Council action</u> |  |  |  |   |
| Annual management<br>measures for 2002  | Pending IPHC<br>action, January<br>2002                                    |  |  |  |   |
| <b>Crab Regulations</b>   |  |  |  |  |   |
| Crab LLP license and<br>vessel buyback program                                    | Congress<br>December 2000  | <i>Proposed rule and<br/>analysis under<br/>review in HQ.</i>                            |  |  |   |
| Crab CDQ season start<br>date   | October 1998   | Nov. 27, 2000  | June 12, 2001  | July 25, 2001<br>66 FR 38626<br>Comment period<br>ended Aug. 24,<br>2001 | <i>draft final rule<br/>under Regional<br/>review</i> |
|   |  |  |  |  |   |

December 2001

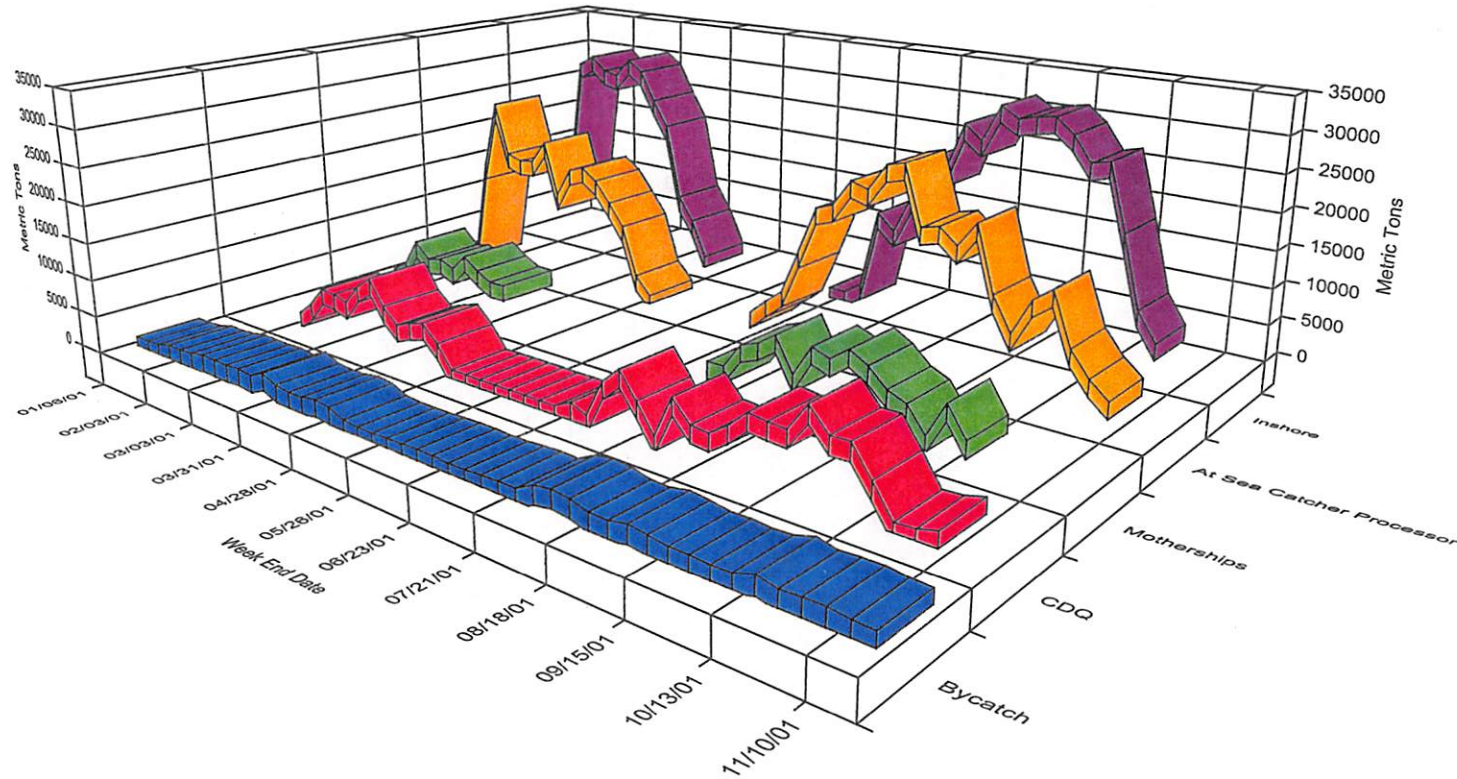
National Marine Fisheries Service

Inseason Management Report

# Bering Sea and Aleutian Islands Reporting Areas



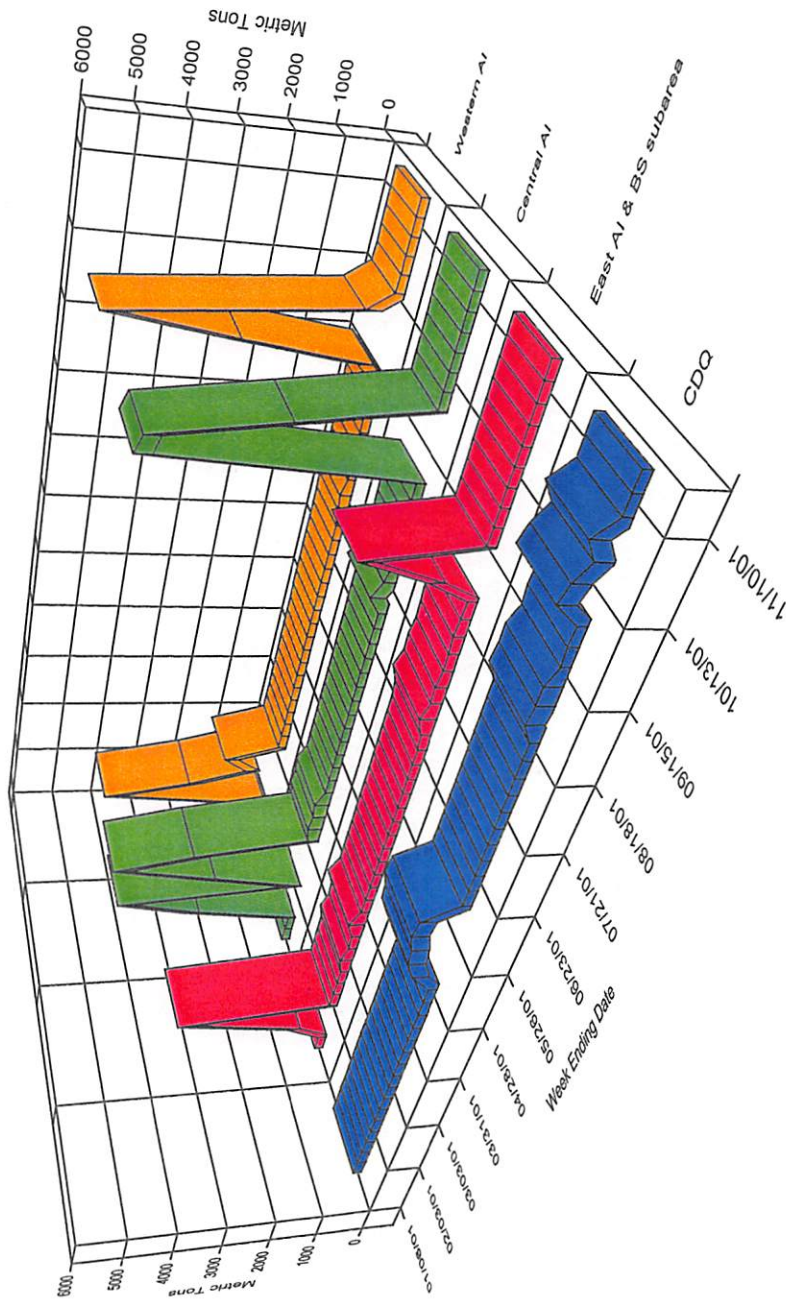
# 2001 Bering Sea Pollock Fishery



| Fishery Component           | TAC Apportionment | Catch            |
|-----------------------------|-------------------|------------------|
| Bycatch                     | 38,400            | 35,463           |
| Community Development Quota | 140,000           | 139,833          |
| Motherships                 | 122,160           | 121,331          |
| At Sea Catcher Processor    | 488,640           | 484,467          |
| Inshore                     | 610,800           | 602,997          |
| <b>Total</b>                | <b>1,400,000</b>  | <b>1,384,091</b> |

Catch data through 11/17/01  
 TAC apportionment of 9/21/01  
 included

# 2001 BSAI Atka Mackerel Fishery



Catch data through 11/17/01

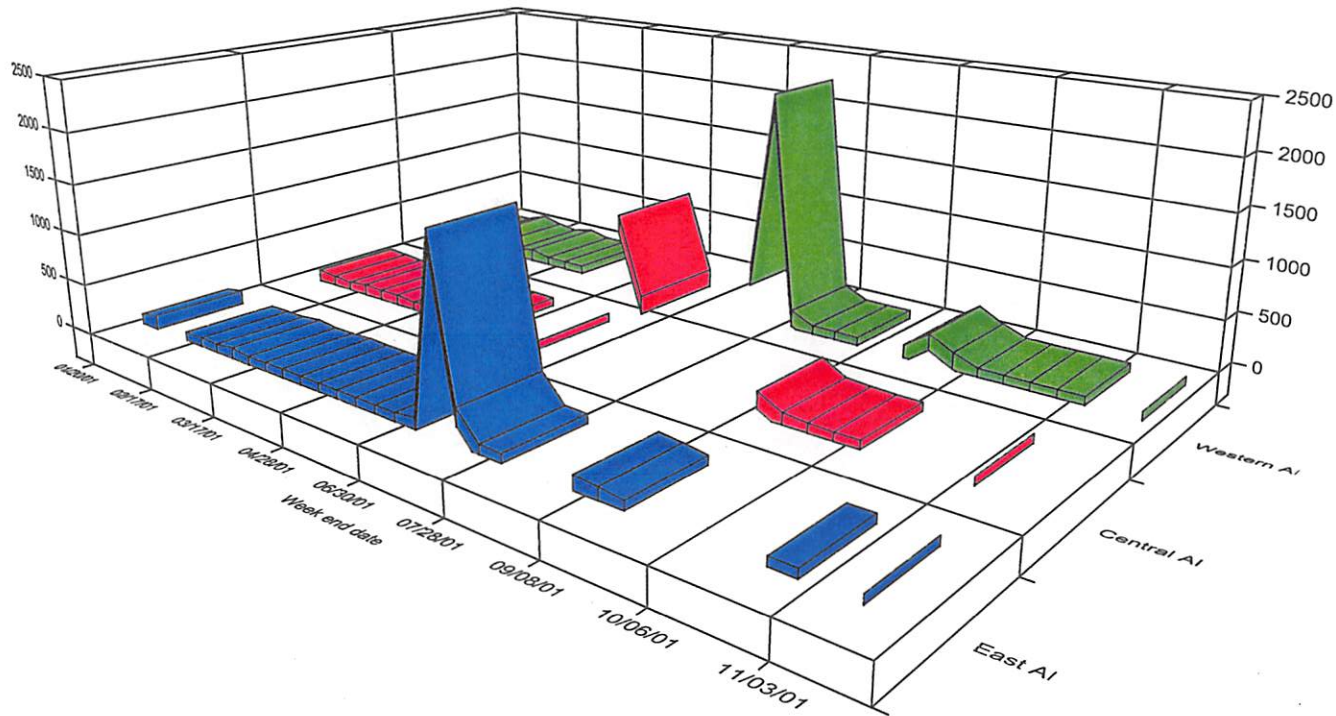


# 2001 BSAI Atka Mackerel TAC, Catch, & Activity Dates

| <b>Eastern AI/BS subarea</b> | <b>Seasonal apportionment</b> | <b>Catch</b> | <b>Open</b> | <b>Closure</b> |
|------------------------------|-------------------------------|--------------|-------------|----------------|
| A season                     | 3,572                         | 4,437        | 20-Jan      | 23-Jan         |
| B season                     | 3,572                         | 3,467        | 1-Sep       | 3-Sep          |
| <b>Central Aleutian</b>      |                               |              |             |                |
| A season                     | 15,540                        | 16,871       | 20-Jan      | 28-Feb         |
| CH limit                     | 7,148                         | 6,392        | 20-Jan      | 2-Feb          |
| B season                     | 15,540                        | 13,495       | 1-Sep       | 18-Sep         |
| CH limit                     | 7,148                         | 8,829        | 1-Sep       | 9-Sep          |
| <b>Western Aleutian</b>      |                               |              |             |                |
| A season                     | 12,904                        | 8,375        | 20-Jan      | 7-Mar          |
| CH limit                     | 6,194                         | 5,763        | 20-Jan      | 13-Feb         |
| B season                     | 12,904                        | 9,882        | 1-Sep       | 30-Sep         |
| CH limit                     | 6,194                         | 5,782        | 1-Sep       | 30-Sep         |

Catch data through 11/17/01, CDQ catch excluded, Amounts in metric tons. The AI Atka Mackerel fishery was closed on 30-Sep to prevent overfishing of sharpchin/northern rockfish.

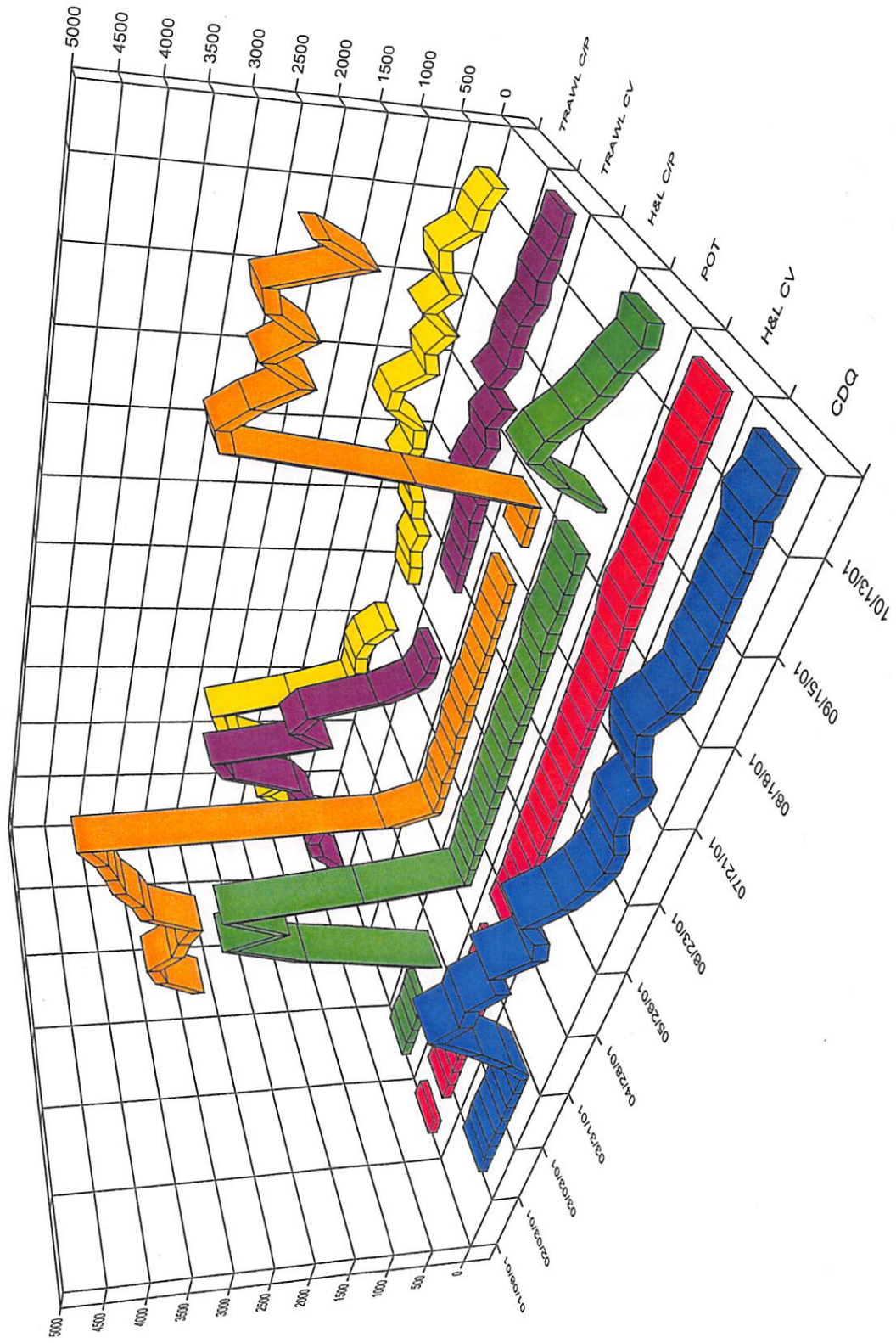
# 2001 AI Pacific Ocean Perch Fishery



|            | TAC   | Catch | Open  | Close  |
|------------|-------|-------|-------|--------|
| East AI    | 2,683 | 2,178 | 1-Jul | 8-Jul  |
| Central AI | 2,368 | 2,474 | 1-Jul | 18-Jul |
| Western AI | 4,385 | 3,272 | 1-Jul | 21-Jul |

Catch Data through 11/17/01

# 2001 BSAI Pacific Cod Fishery



Catch data through 11/17/01

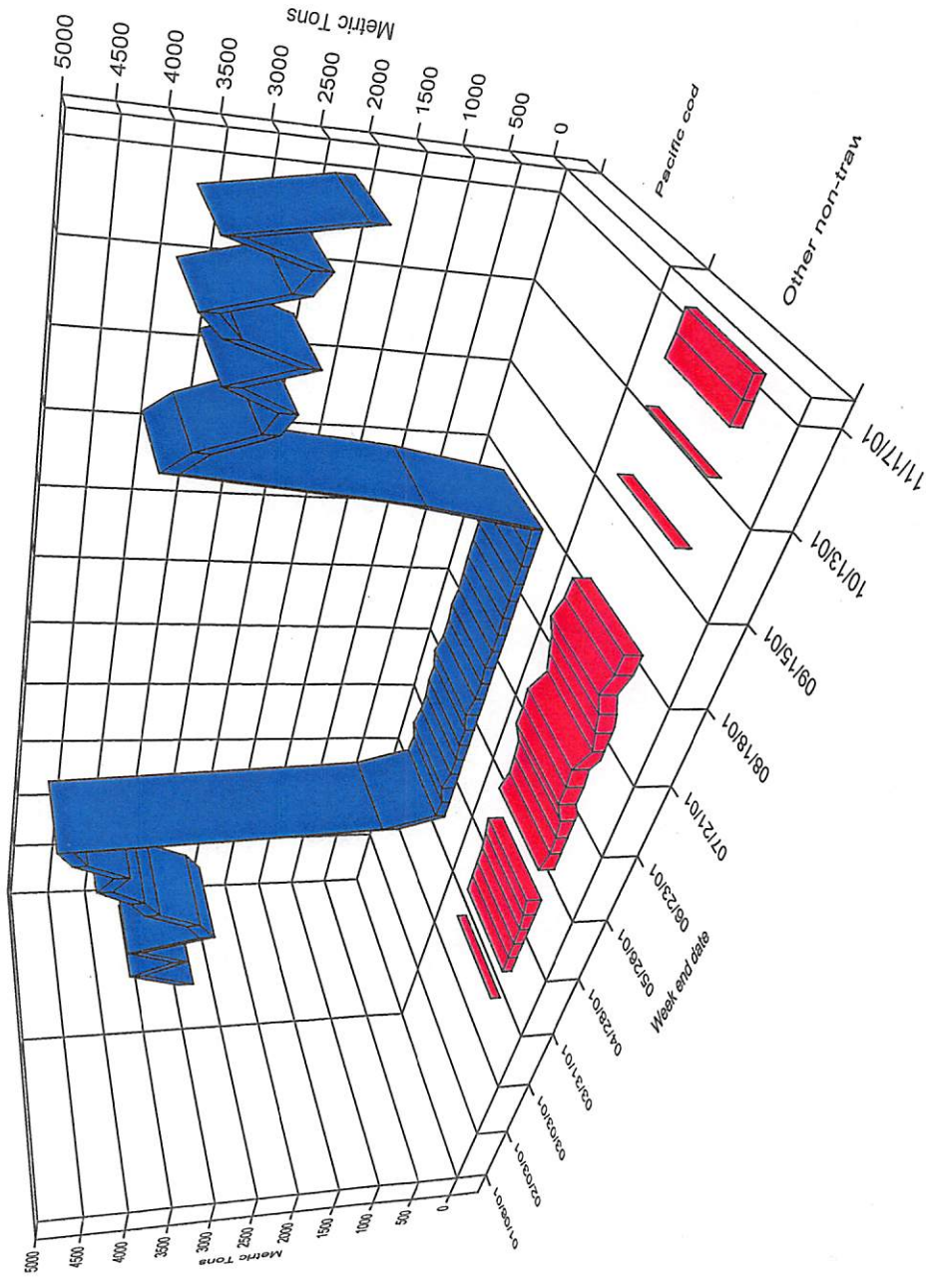
## 2001 BSAI Pacific Cod TAC Apportionment & Catch

| Fishery Component              | TAC Apportionment | Catch  |
|--------------------------------|-------------------|--------|
| <b>Jig gear</b>                | 478               | 71     |
| <b>Hook and Line/ Pot Gear</b> |                   |        |
| H&L Catcher Processor          | 95,821            | 86,761 |
| H&L Catcher Vessel             | 665               | 610    |
| Pot gear                       | 17,469            | 16,272 |
| <b>Trawl gear</b>              |                   |        |
| Catcher Processor              | 30,867            | 29,046 |
| Catcher Vessel                 | 26,867            | 21,353 |

Amounts in metric tons, Apportionments include re-allocation of 10/5/01

H&L & Pot < 60' vessel catch included in H&L catcher vessel catch

# 2001 BSAI H&L Groundfish Catch



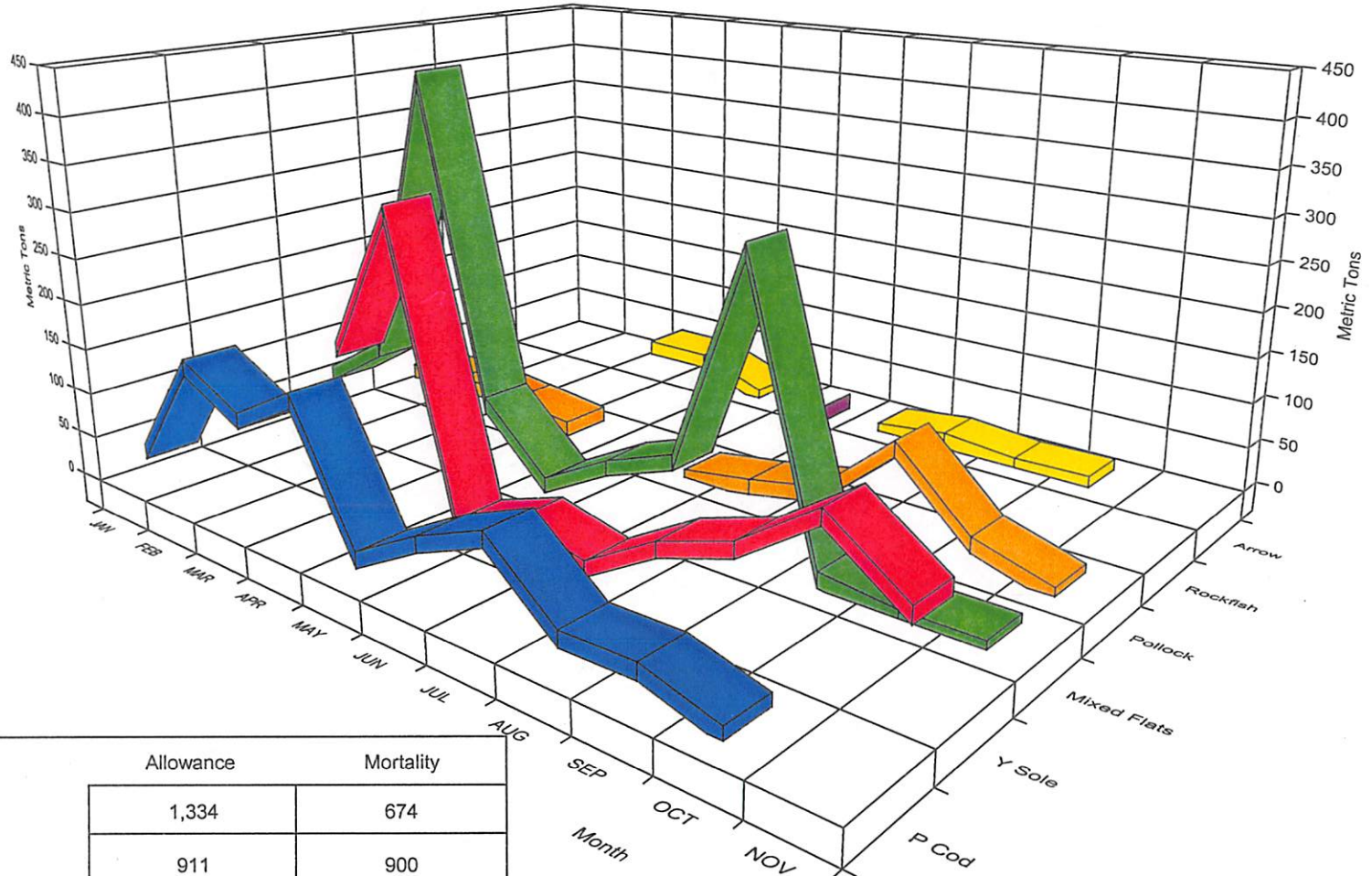
Catch data through 11/17/01.

## 2001 BSAI H&L Groundfish Catch, Halibut Mortality, & Closure Activity

| <b>Target Fishery Category</b>       | <b>Pacific cod</b> | <b>Other non-trawl (turbot)</b> |
|--------------------------------------|--------------------|---------------------------------|
| Groundfish Catch                     | 87,281             | 1,680                           |
| Halibut Mortality Taken              | 678                | 58                              |
| Mortality Apportionment              | 755                | 78                              |
| <b>Closure Activity</b>              |                    |                                 |
| <b>Target Fishery Category</b>       | <b>Open</b>        | <b>Closure</b>                  |
| <b>Pacific cod</b>                   |                    |                                 |
| <b>catcher processors</b>            | 1-Jan              | 25-Mar                          |
|                                      | 15-Aug             |                                 |
| <b>catcher processors &lt; 60 ft</b> | 1-Jan              | 25-Mar                          |
|                                      | 1-Aug              |                                 |
| <b>catcher vessels &lt; 60 ft</b>    | 1-Jan              | 11-Jun                          |
|                                      | 1-Aug              |                                 |
| <b>catcher vessels &gt;= 60 ft</b>   | 1-Jan              | 27-Mar                          |
|                                      | 15-Aug             |                                 |
|                                      |                    | TAC apportionment               |
|                                      |                    | Spec/halibut mort               |
|                                      |                    | TAC apportionment               |

Catch data through 11/17/01

# 2001 BSAI Trawl Halibut Mortality by Target



| Trawl Target                          | Allowance | Mortality |
|---------------------------------------|-----------|-----------|
| Pacific cod                           | 1,334     | 674       |
| Yellowfin Sole                        | 911       | 900       |
| Rocksole/Flathead/'Other flatfish'    | 854       | 1,128     |
| Pollock/Atka mackerel/Other species   | 232       | 258       |
| Rockfish                              | 69        | 55        |
| Greenland turbot/Sablefish/Arrowtooth | 0         | 79        |
| Total                                 | 3,400     | 3,095     |

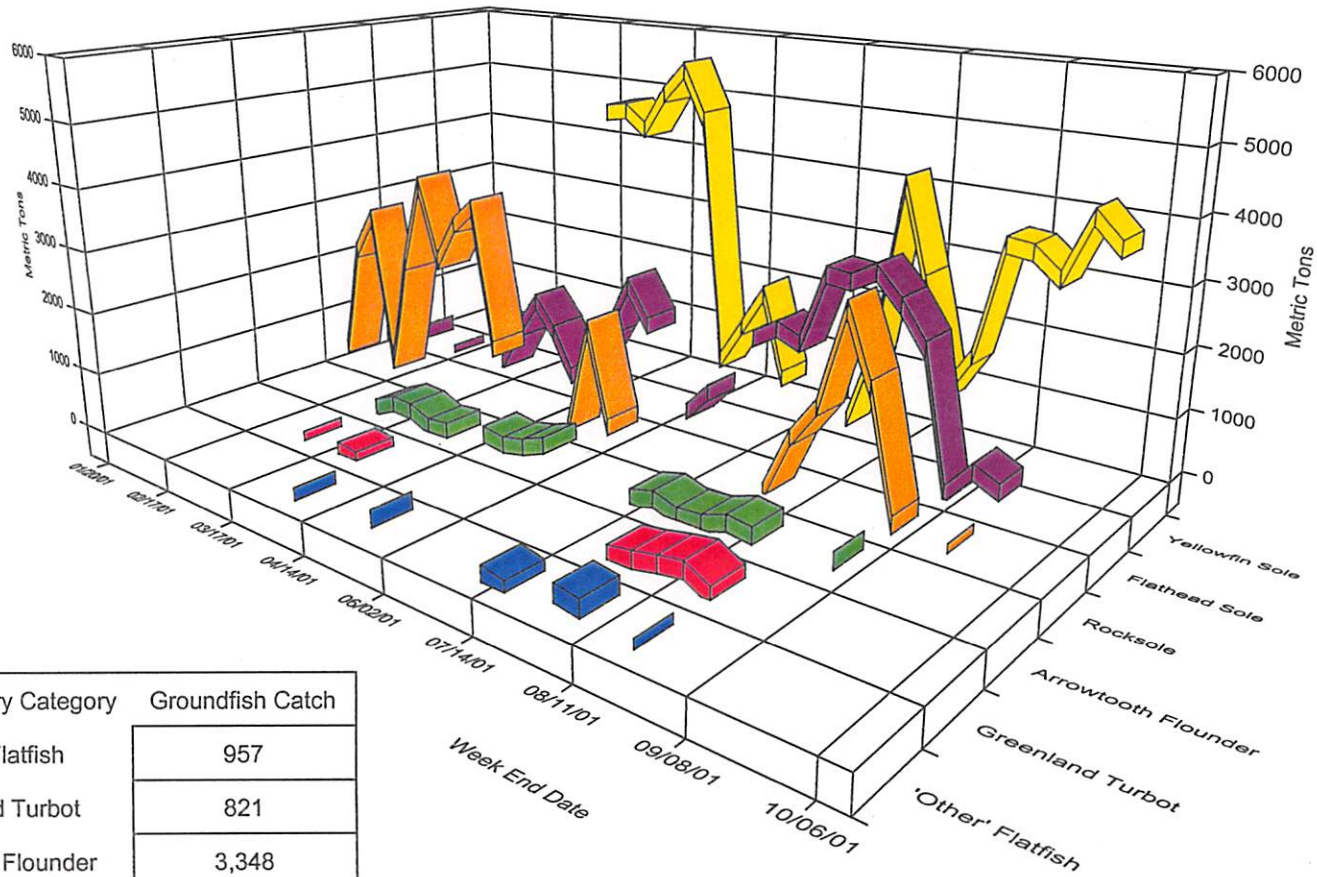
Catch data through 11/17/01

# 2001 BSAI Trawl PSC Closure Activity

| Target Fishery Category                | Cause of Closure     | Activity Dates |              |
|--|----------------------|----------------|--------------|
| Rock Sole/Flathead Sole/Other Flatfish | Halibut Mortality    | Open Date      | Closure Date |
|  |                      | 20-Jan         | 20-Mar       |
|  |                      | 1-Apr          | 27-Apr       |
|  |                      | 1-Jul          | 24-Aug       |
|  |                      |                |              |
| Yellowfin Sole                         | Halibut Mortality    | 20-Jan         | 25-Apr       |
|  |                      | 21-May         | 11-Jun       |
|  |                      | 1-Jul          |              |
|  | Zone 1 Red King Crab | 20-Jan         | 29-Oct       |



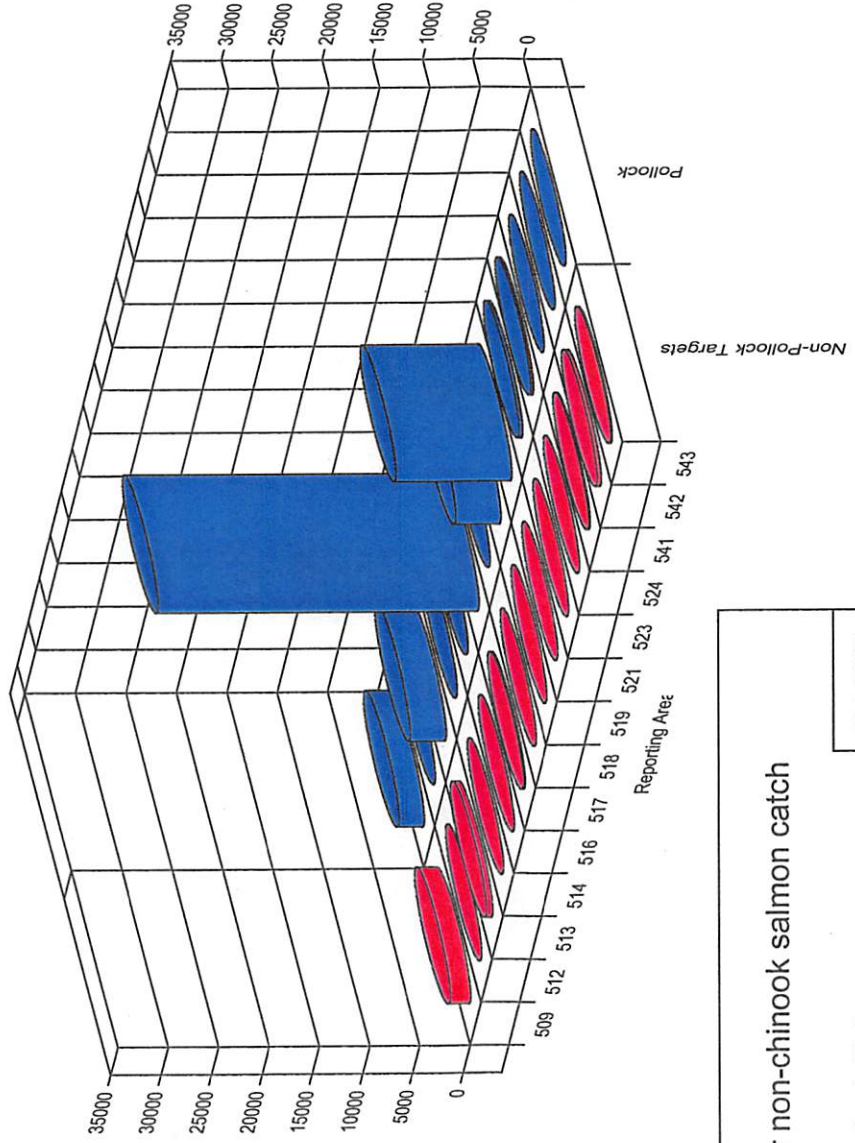
# 2001 BSAI Trawl Flatfish by Target



| Target Fishery Category | Groundfish Catch |
|-------------------------|------------------|
| 'Other' Flatfish        | 957              |
| Greenland Turbot        | 821              |
| Arrowtooth Flounder     | 3,348            |
| Rocksole                | 30,592           |
| Flathead Sole           | 30,206           |
| Yellowfin Sole          | 92,716           |

Groundfish catch by flatfish target , data through 11/17/01.

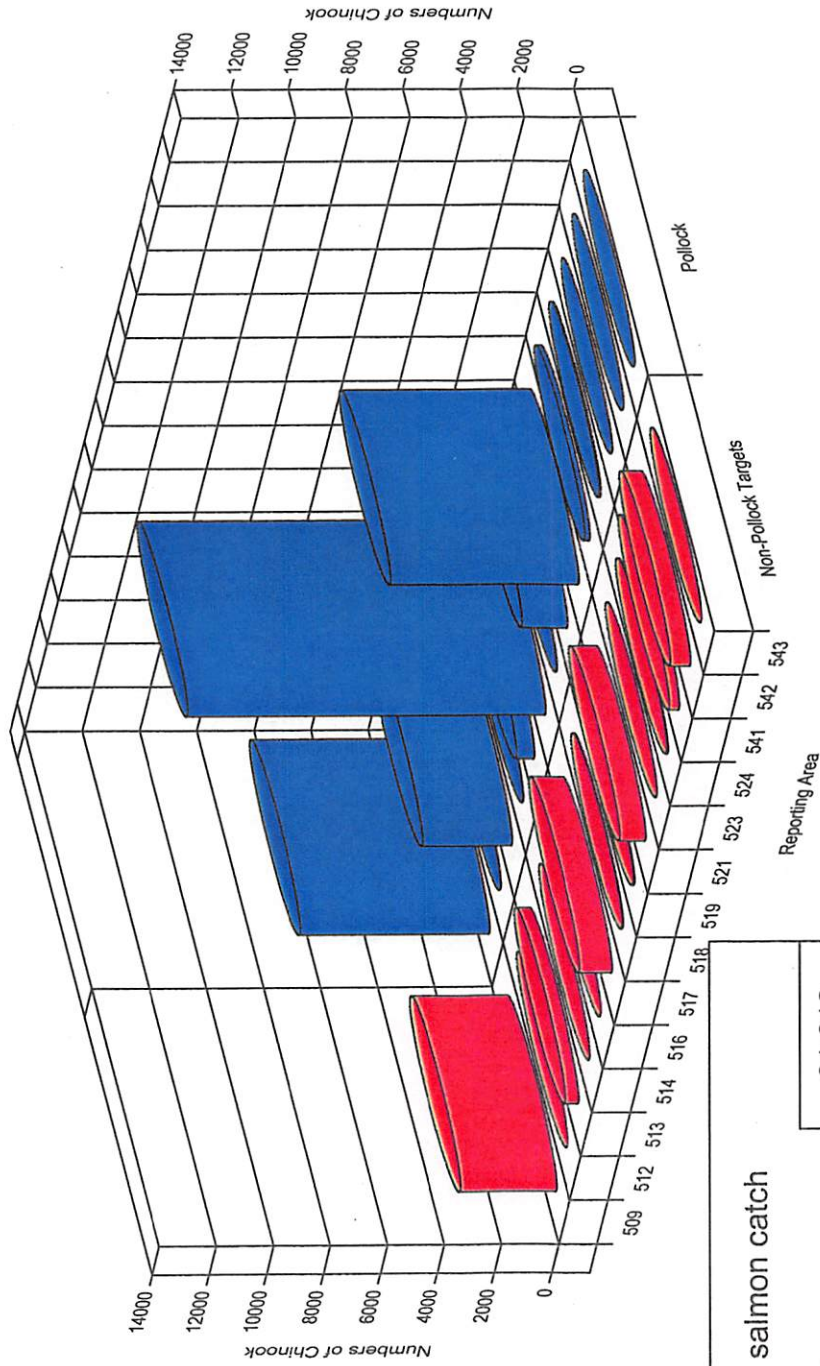
# 2001 BSAI Trawl Non-Chinook Salmon Catch



|  |        |
|--|--------|
| 2001 trawl gear non-chinook salmon catch |        |
| pollock fishery                          | 54,530 |
| non-pollock                              | 3,474  |

Catch Data through 11/17/01

# 2001 BSAI Trawl Chinook Salmon Catch

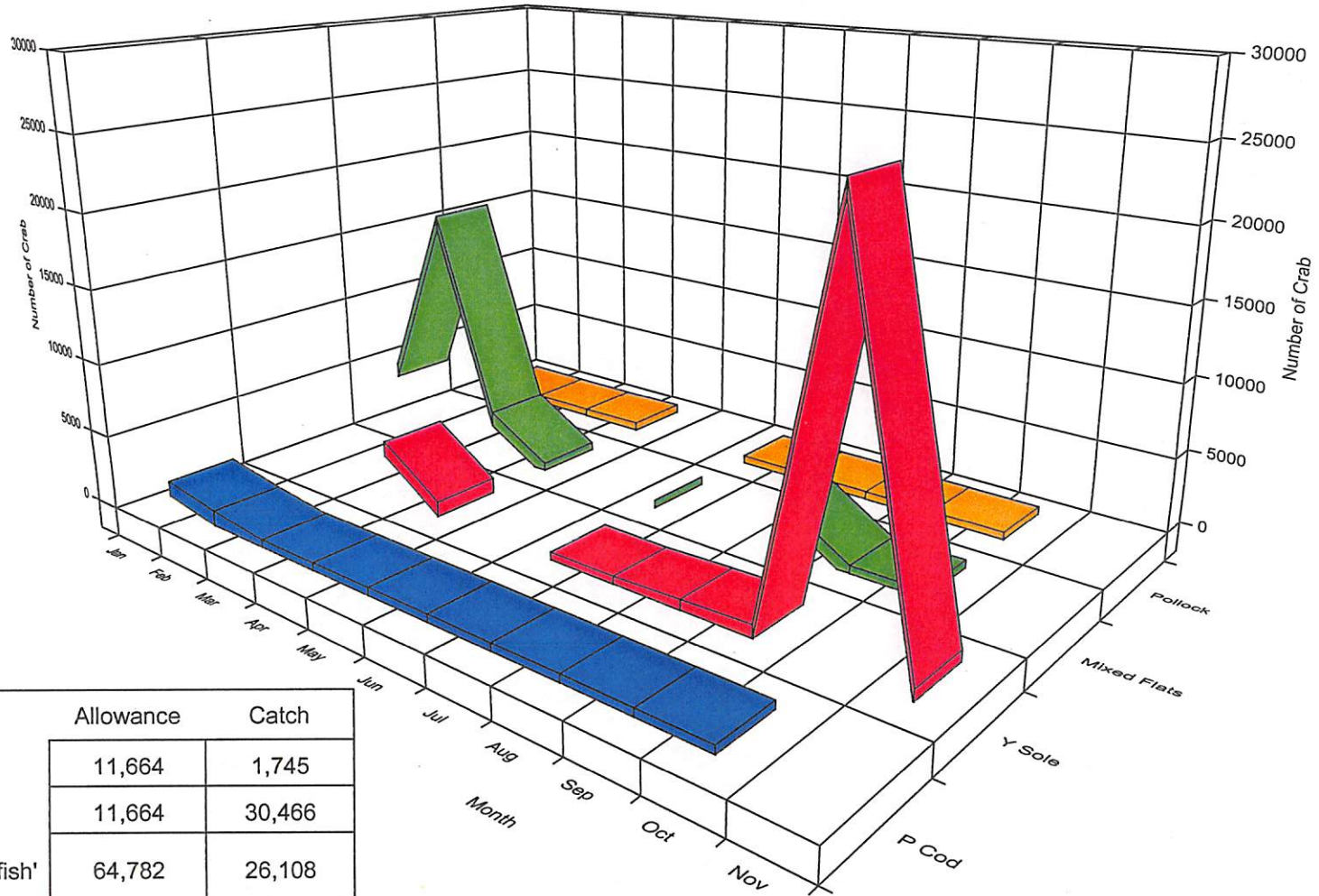


## 2001 trawl gear chinook salmon catch

|                                       |        |
|---------------------------------------|--------|
| pollock fishery                       | 31,312 |
| non-pollock                           | 7,016  |
| Chinook salmon pollock limit schedule |        |
| Year                                  | Limit  |
| 2001                                  | 41,000 |
| 2002                                  | 37,000 |
| 2003                                  | 33,000 |
| 2004                                  | 29,000 |

Catch Data through 11/17/01

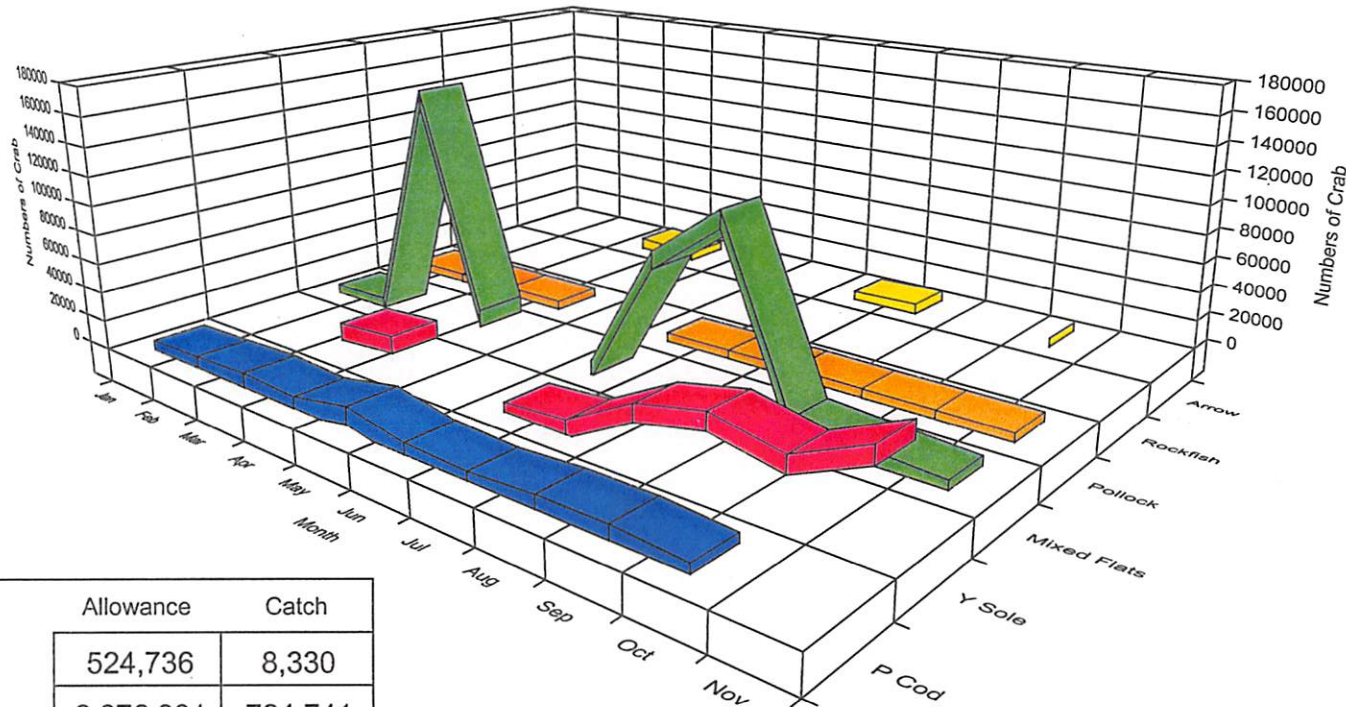
# 2001 BSAI Trawl Red King Crab Catch in Zone 1



| Target Fishery                     | Allowance | Catch  |
|------------------------------------|-----------|--------|
| Pacific cod                        | 11,664    | 1,745  |
| Yellowfin Sole                     | 11,664    | 30,466 |
| Rocksole/Flathead/'Other flatfish' | 64,782    | 26,108 |
| Pollock/Atka mackerel/Other        | 1,615     | 104    |
| Total                              | 89,725    | 58,423 |
| Red King Crab Savings Subarea      | 22,674    | 16,870 |

Catch in numbers of crab, data through 11/17/01  
 Red King Crab Savings Subarea limit is 35% of  
 Rock Sole et al allowance.

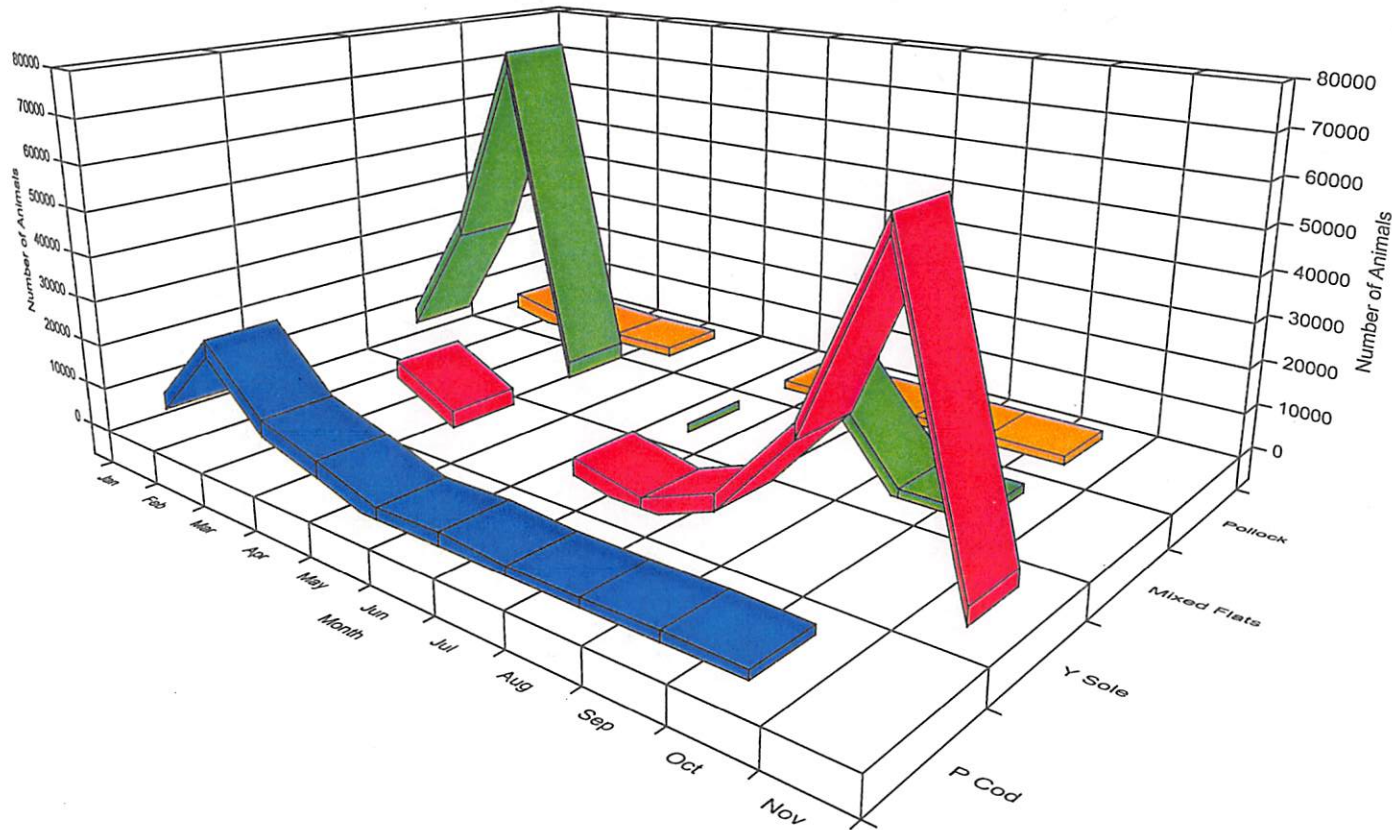
# 2001 BSAI Trawl C. opilio Catch in COBLZ



| Target Fishery                                | Allowance | Catch    |
|---|-----------|----------|
| Pacific cod                                   | 524,736   | 8,330    |
| Yellowfin Sole                                | 2,876,981 | 724,741  |
| Rocksole/Flathead/'Other flatfish'            | 469,130   | 483,250  |
| Pollock/Atka mackerel/Other species           | 72,428    | 6,950    |
| Rockfish                                      | 40,237    | 0        |
| Greenland turbo/Sablefish/Arrowtooth Flounder | 40,238    | 0        |
| Total   | 4,023,750 | 1,223,27 |

Catch in numbers of crab, No Closures, data through 11/17/01

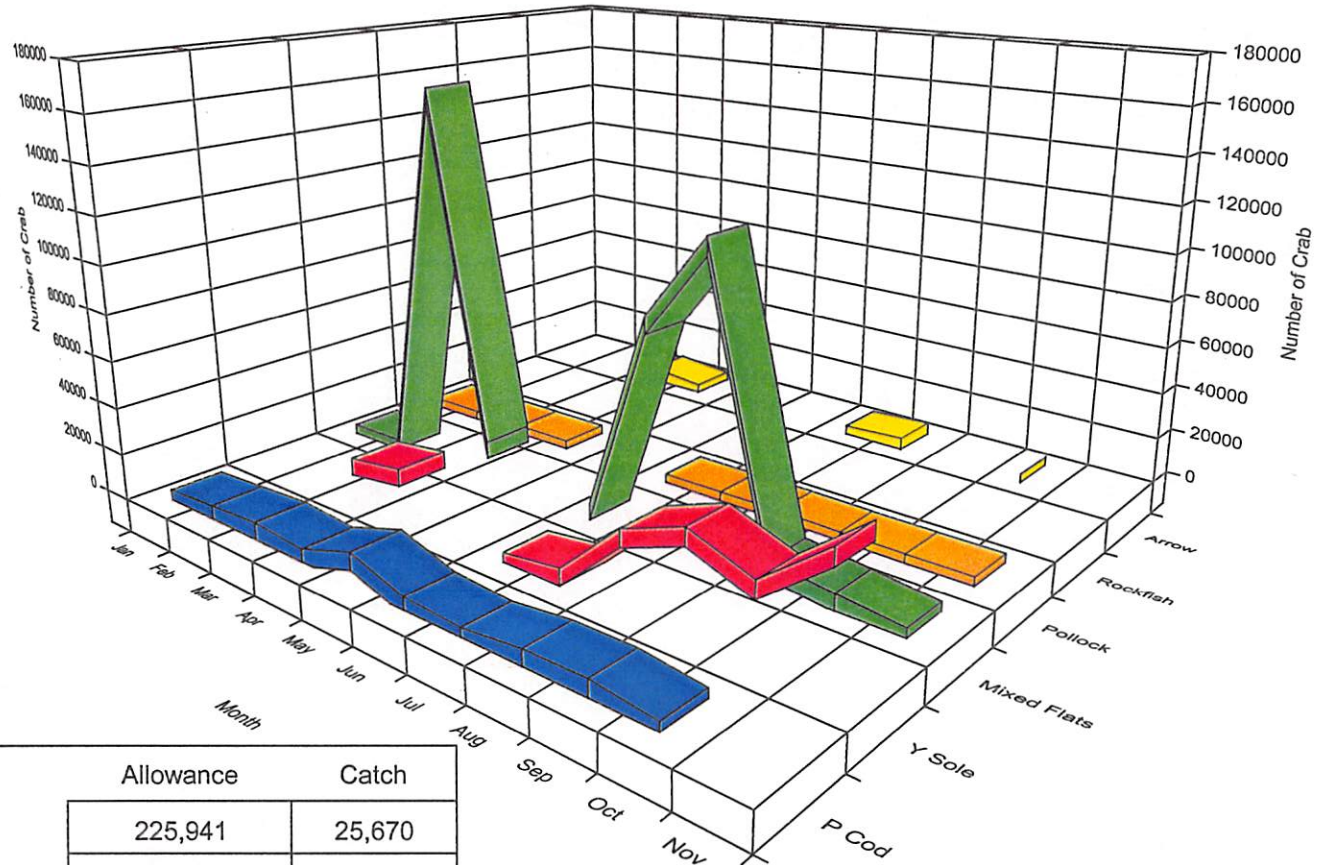
# 2001 BSAI Trawl C. Bairdi Crab Catch in Zone 1



| Target Fishery                      | Allowance | Catch   |
|-------------------------------------|-----------|---------|
| Pacific cod                         | 136,400   | 46,478  |
| Yellowfin Sole                      | 253,894   | 122,302 |
| Rocksole/Flathead/'Other flatfish'  | 272,126   | 146,255 |
| Pollock/Atka mackerel/Other species | 12,830    | 4,705   |
| Total                               | 675,250   | 319,739 |

Catch in numbers of crab, No Closures, data through 11/17/01

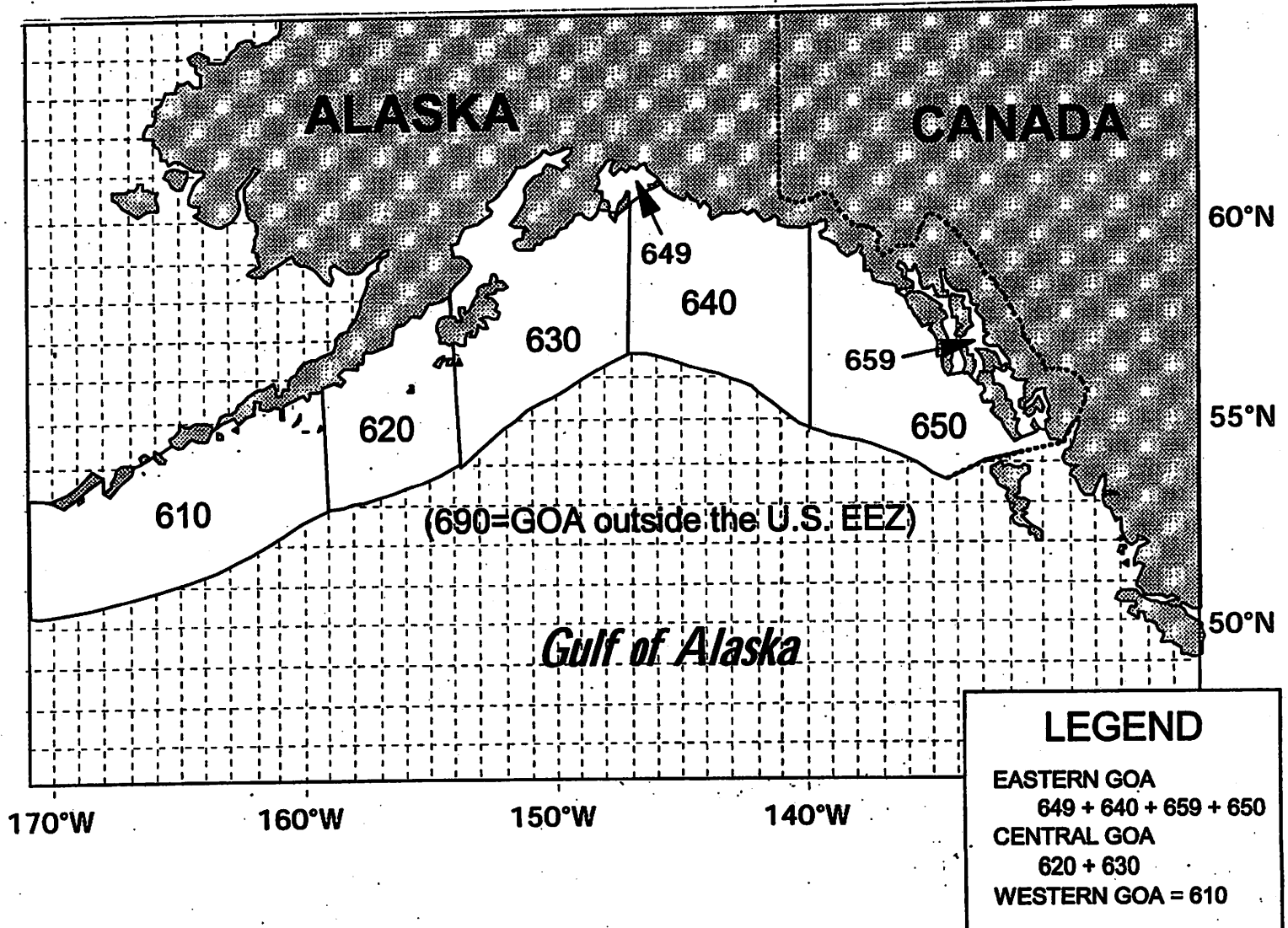
# 2001 BSAI Trawl C. Bairdi Crab Catch in Zone 2



| Target Fishery                                    | Allowance | Catch   |
|---|-----------|---------|
| Pacific cod                                       | 225,941   | 25,670  |
| Yellowfin Sole                                    | 1,246,502 | 178,729 |
| Rocksole/Flathead/'Other flatfish'                | 415,501   | 399,632 |
| Pollock/Atka mackerel/Other species               | 19,148    | 587     |
| Rockfish  | 7,658     | 0       |
| Greenland turbot/Sablefish/Arrowtooth<br>Flounder | 0         | 4,633   |
| Total   | 1,914,750 | 609,251 |

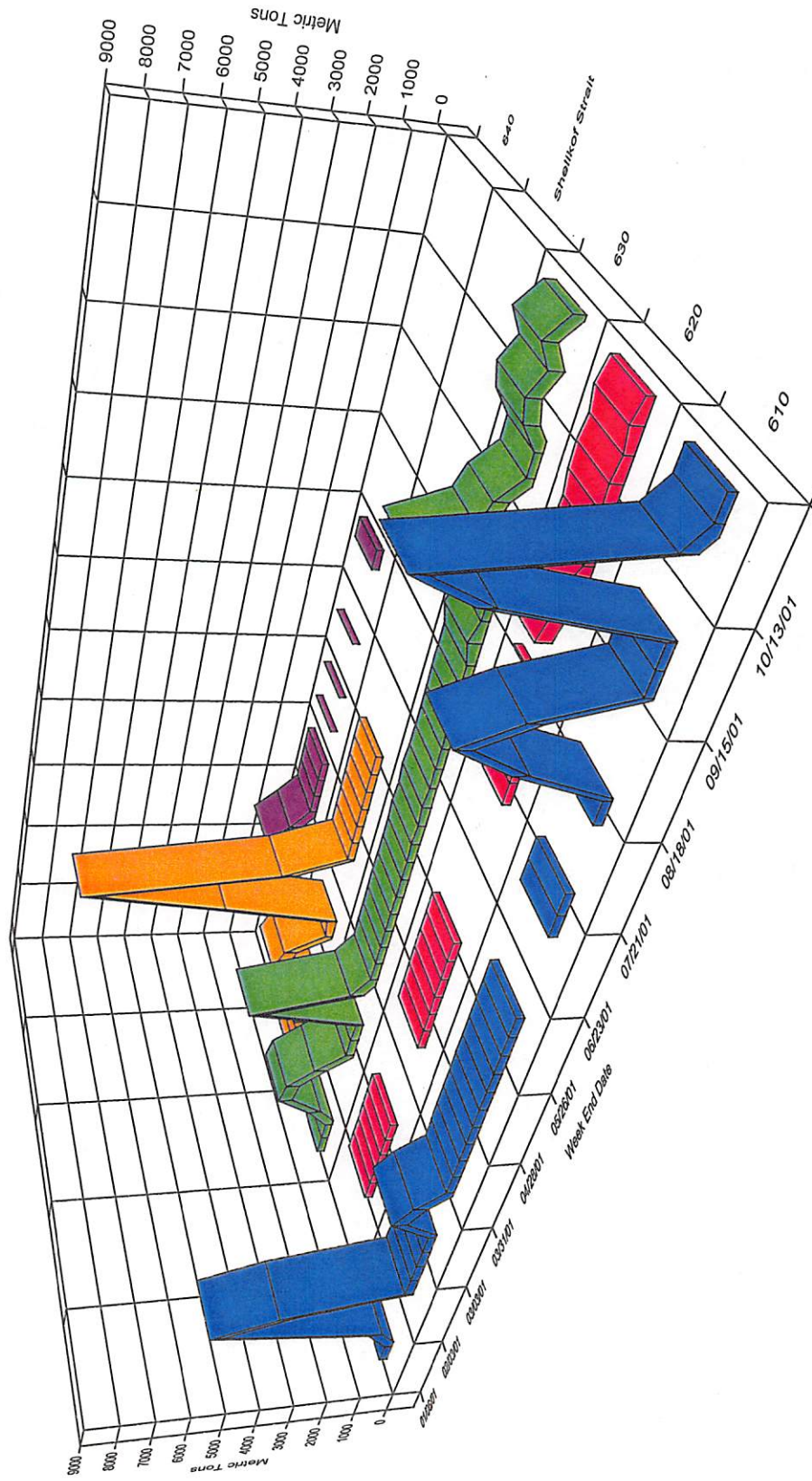
Catch in numbers of crab, No Closures, data through 11/17/01

# Gulf of Alaska Reporting Areas





# 2001 GOA Pollock Fishery



640 TAC = 2,235, catch = 2,351 mt, Southeast Outside District

TAC = 6,460 mt, catch < 1 mt. Catch data through 11/17/01

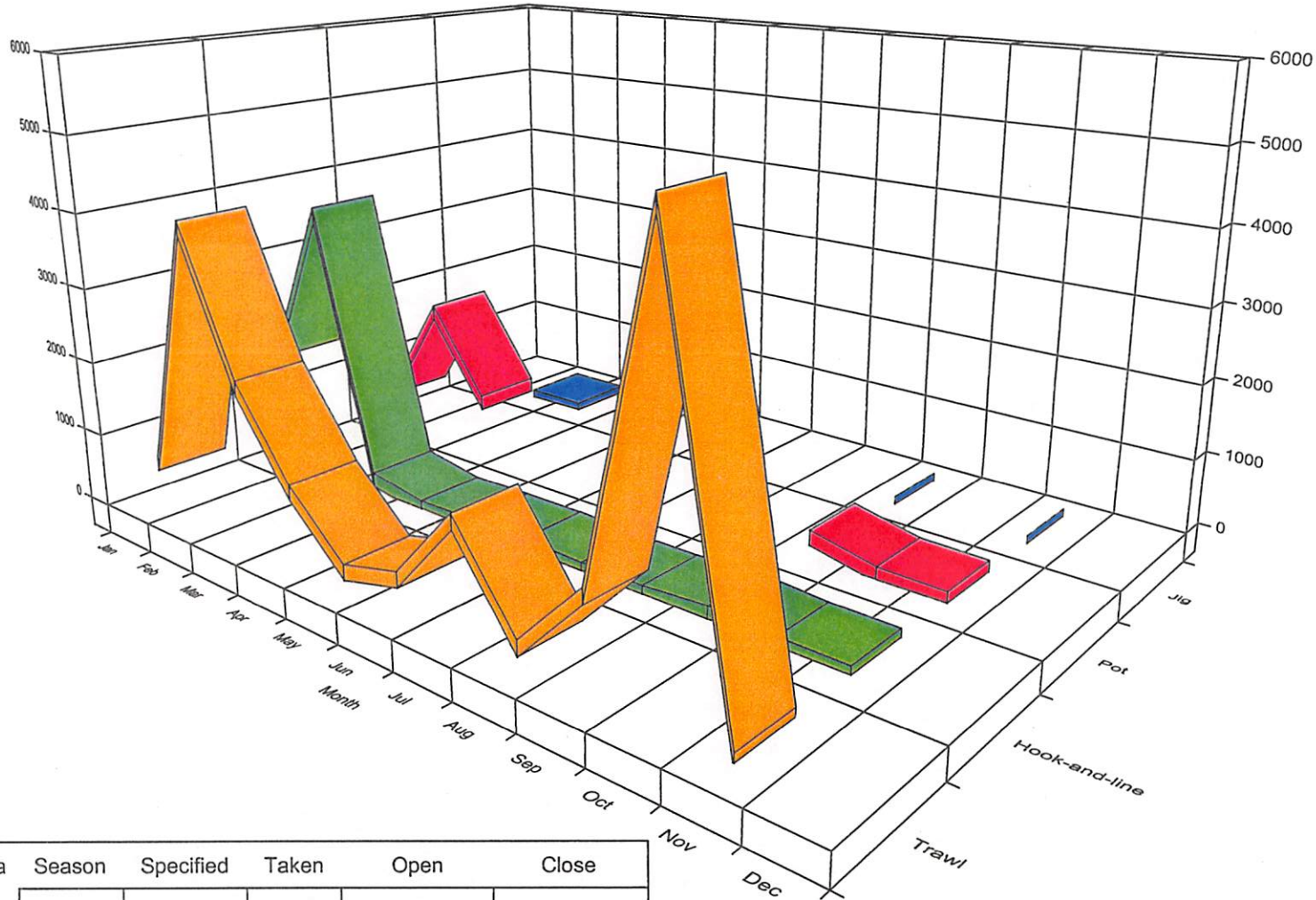
# 2001 GOA Area 610, 620, 630 Pollock Fishery

Area & season TAC apportionments catch and activity dates

| Reporting Area         | Season        | Specified TAC | Adjusted TAC  | Catch         | Open          | Close  |
|------------------------|---------------|---------------|---------------|---------------|---------------|--------|
| 610                    | A             | 7,707         | na            | 9,719         | 20-Jan        | 29-Jan |
|                        | B             | 3,854         | 1,842         | 2,008         | 15-Mar        | 16-Mar |
|                        |               |               |               |               | 21-Mar        | 21-Mar |
|                        | C             | 10,998        | 10,832        | 8,358         | 20-Aug        | 7-Sep  |
|                        | D             | 9,165         | 10,998        | 10,337        | 1-Oct         | 13-Oct |
|                        | Annual totals |               | <b>31,724</b> | <b>31,379</b> | <b>30,423</b> |        |
| 620                    | A             | 560           | na            | 27            |               | 20-Jan |
|                        | B             | 280           | 813           | 18            |               |        |
|                        | C             | 6,546         | 5,904         | 1,490         | 20-Aug        | 15-Sep |
|                        | D             | 5,455         | 5,904         | 384           | 1-Oct         | 1-Nov  |
|                        | Annual totals |               | <b>12,841</b> | <b>12,621</b> | <b>1,919</b>  |        |
| 630                    | A             | 5,474         | na            | 5,278         | 20-Jan        | 14-Feb |
|                        | B             | 2,737         | 2,933         | 4,420         | 15-Mar        | 17-Mar |
|                        | C             | 8,610         | 8,593         | 5,130         | 20-Aug        | 10-Sep |
|                        | D             | 7,175         | 8,593         | 2,187         | 1-Oct         | 1-Nov  |
|                        | Annual totals |               | <b>23,996</b> | <b>20,119</b> | <b>17,014</b> |        |
| Shelikof Strait        | A             | 12,413        | na            | 4,692         | 20-Jan        | 1-Mar  |
|                        | B             | 6,206         | 13,927        | 14,203        | 15-Mar        | 31-Mar |
| Annual totals          |               | <b>18,619</b> | <b>18,619</b> | <b>18,895</b> |               |        |
| 610 through 630 totals |               | <b>87,180</b> | <b>82,738</b> | <b>68,250</b> |               |        |

Catch Data through 11/17/01

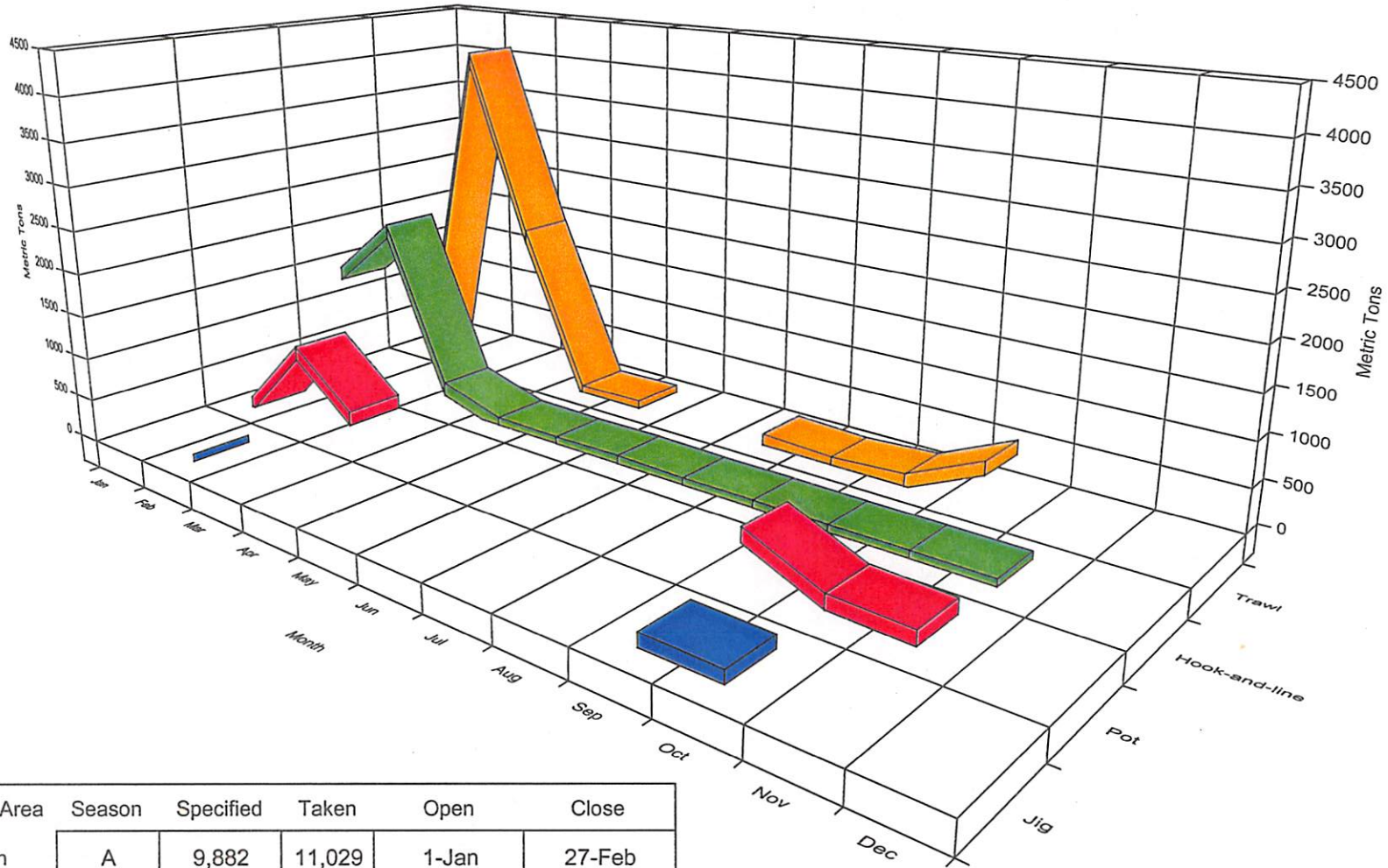
# 2001 GOA Central Area Inshore Pacific Cod Fishery



| Regulatory Area | Season | Specified | Taken  | Open  | Close |
|-----------------|--------|-----------|--------|-------|-------|
| Central         | A      | 16,335    | 19,685 | 1-Jan | 4-Mar |
|                 | B      | 10,890    | 6,875  | 1-Sep |       |
|                 | Total  | 27,225    | 25,132 |       |       |

Catch Data Through 11/17/01

# 2001 GOA Western Area Inshore Pacific Cod Fishery

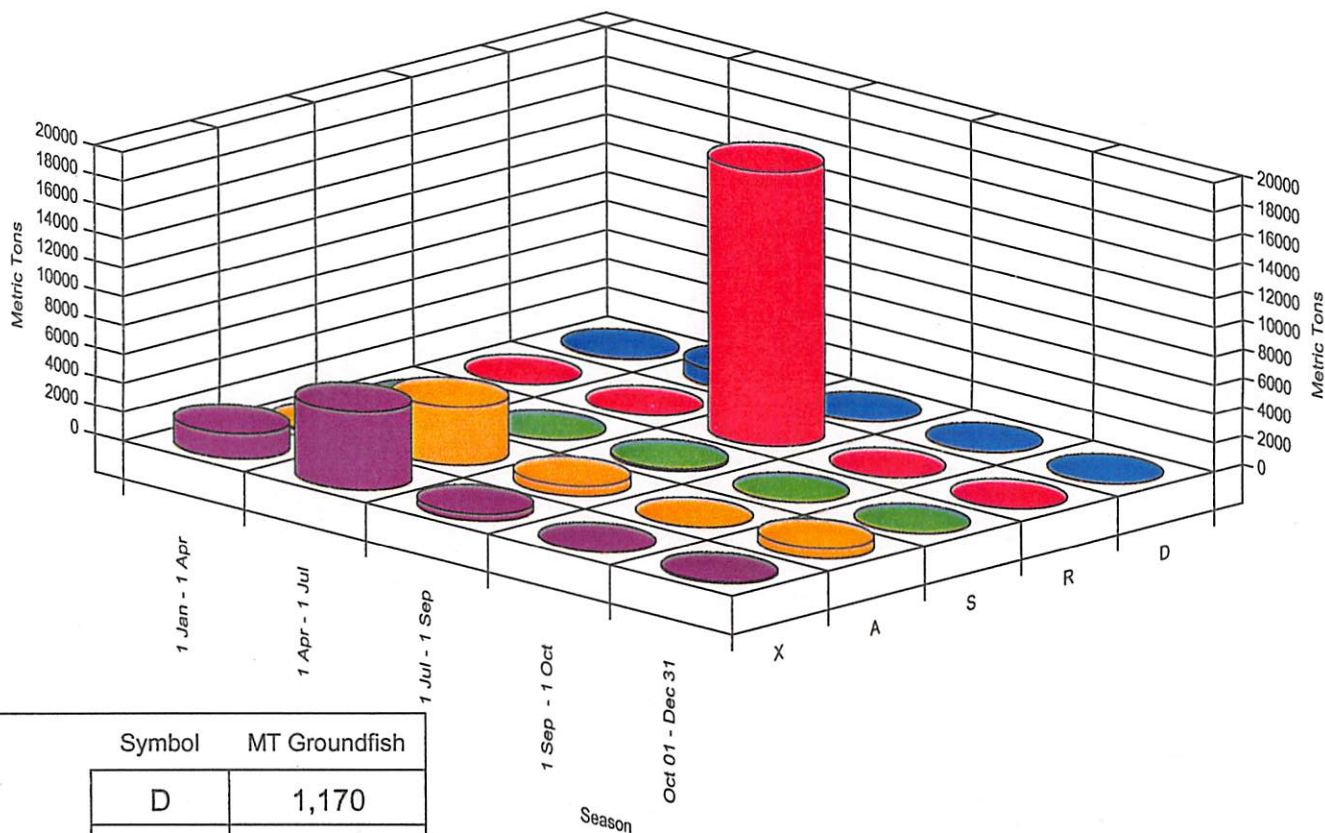


| Regulatory Area | Season | Specified | Taken  | Open  | Close  |
|-----------------|--------|-----------|--------|-------|--------|
| Western         | A      | 9,882     | 11,029 | 1-Jan | 27-Feb |
|                 | B      | 6,588     | 1,416  | 1-Sep |        |
|                 | Total  | 16,470    | 12,445 |       |        |

Catch Data Through 11/17/01

# 2001 GOA Trawl Deep Water Complex Fishery

## Groundfish catch by target fishery and season

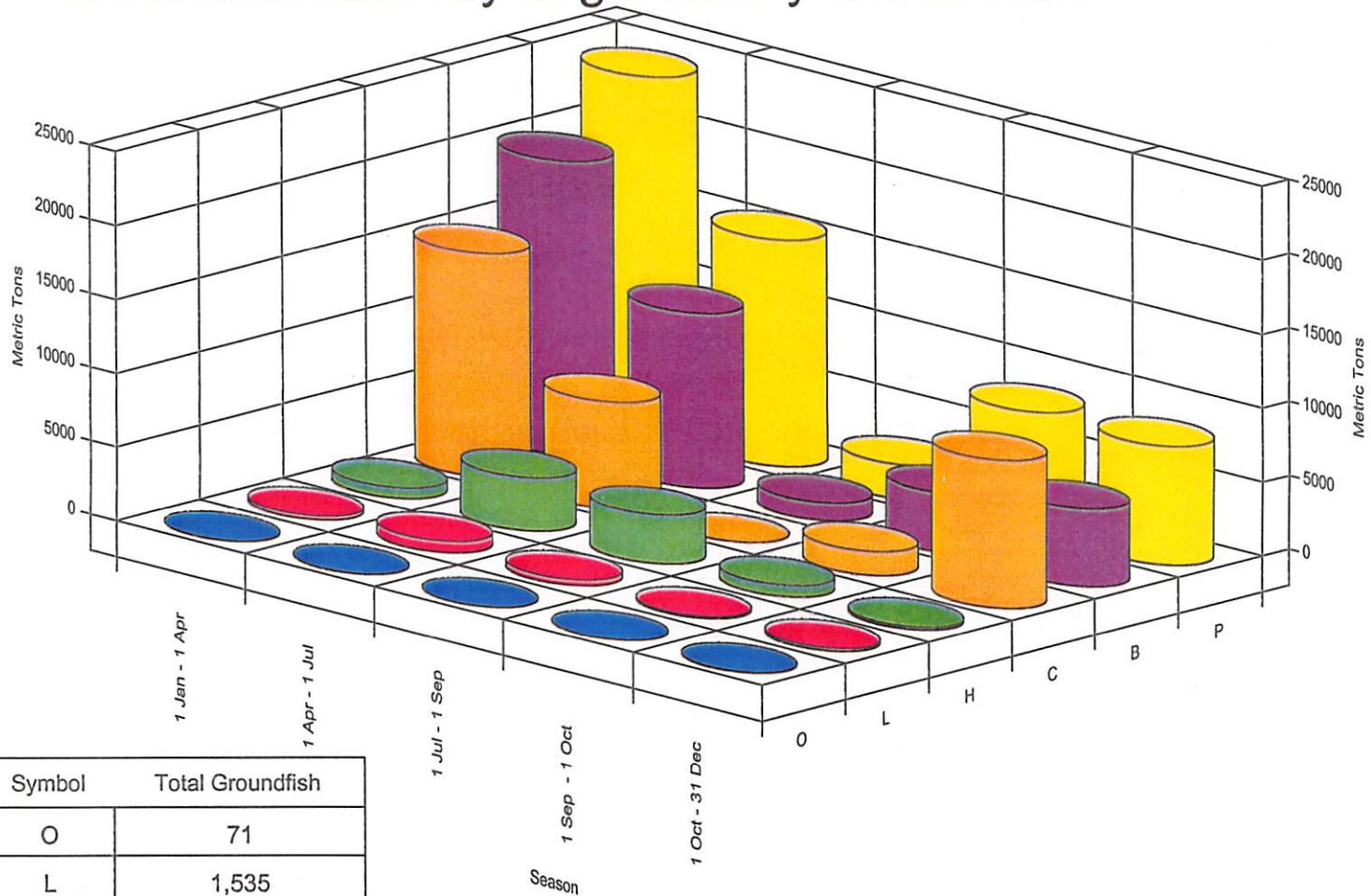


| Target Fishery                 | Symbol | MT Groundfish |
|--------------------------------|--------|---------------|
| Deep water flatfish            | D      | 1,170         |
| Rockfish                       | R      | 18,996        |
| Sablefish                      | S      | 165           |
| Arrowtooth Flounder            | A      | 5,536         |
| Rex Sole                       | X      | 7,690         |
| <b>Total Groundfish Caught</b> |        | <b>33,557</b> |

Catch Data Through 11/17/01

# 2001 GOA Trawl Shallow Water Complex Fishery

## Groundfish catch by target fishery and season



| Target Fishery                 | Symbol | Total Groundfish |
|--------------------------------|--------|------------------|
| "Other Species"                | O      | 71               |
| Flathead Sole                  | L      | 1,535            |
| Shallow water Flatfish         | H      | 8,214            |
| Pacific Cod                    | C      | 29,569           |
| Bottom Pollock                 | B      | 30,704           |
| Pollock                        | P      | 44,292           |
| <b>Total Groundfish Caught</b> |        | <b>114,385</b>   |

Catch Data Through 11/17/01

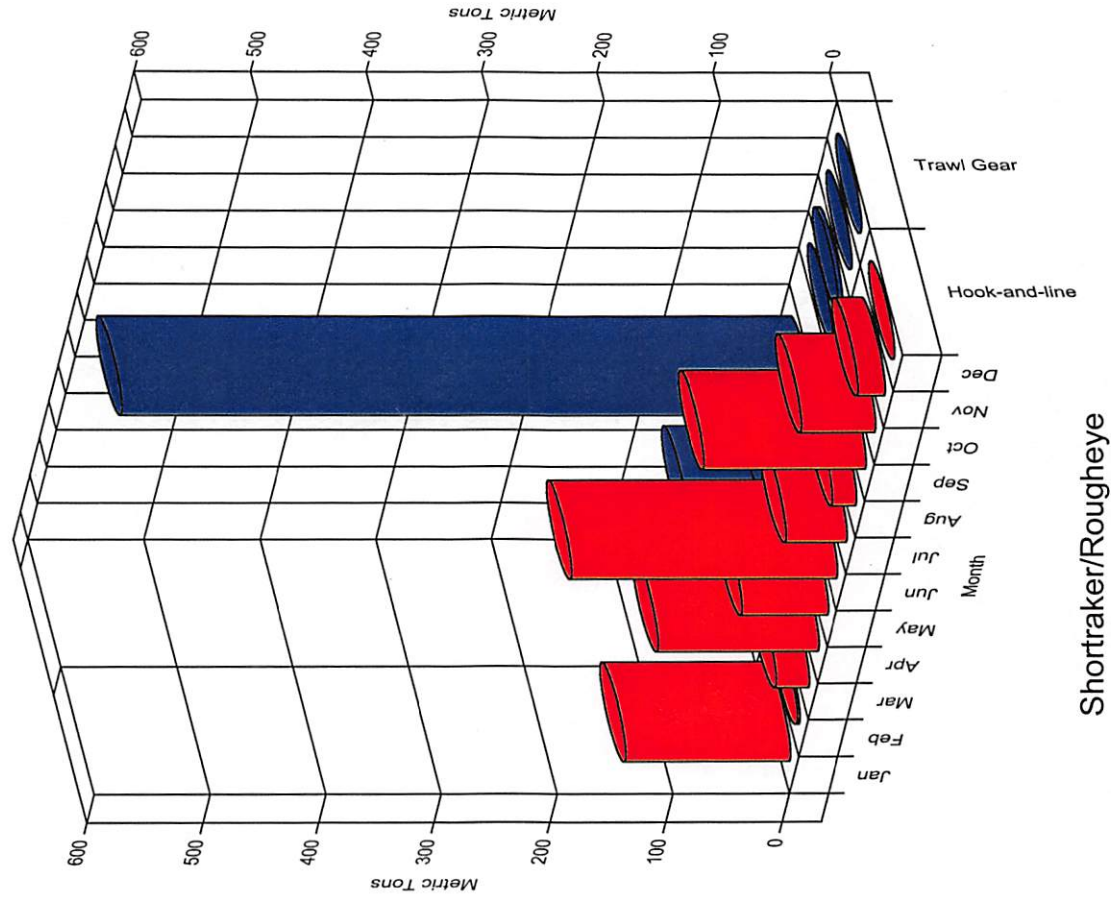
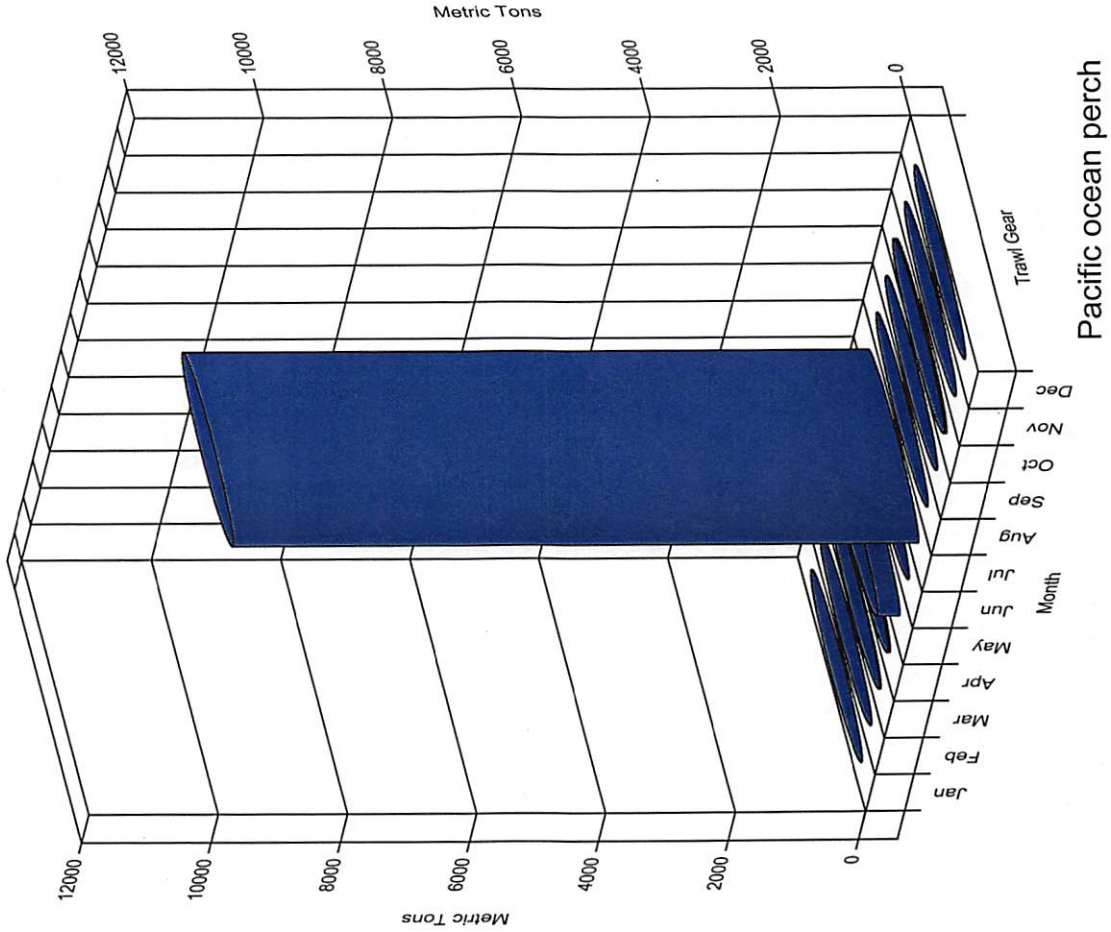
# 2001 GOA Trawl Fishery

## Halibut Mortality by Fishery Complex, Season & Activity Dates

| Fishery Target        | Season         | Specified | Taken | Open   | Closed |
|-----------------------|----------------|-----------|-------|--------|--------|
| Shallow Complex       | 1 Jan - 1 Apr  | 450       | 294   | 20-Jan |        |
|                       | 1 Apr - 1 Jul  | 150       | 340   |        | 27-Apr |
|                       |                |           |       | 21-May | 26-May |
|                       |                |           |       | 10-Jun | 27-Jun |
|                       | 1 Jul - 1 Sep  | 200       | 196   | 1-Jul  | 4-Aug  |
|                       | 1 Sep - 1 Oct  | 100       | 104   | 1-Sep  | 5-Sep  |
|                       |                |           |       |        |        |
| Deep Complex          | Season         | Specified | Taken | Open   | Closed |
|                       | 1 Jan - 1 Apr  | 100       | 65    | 20-Jan |        |
|                       | 1 Apr - 1 Jul  | 300       | 327   |        | 25-May |
|                       | 1 Jul - 1 Sep  | 400       | 371   | 1-Jul  | 23-Jul |
|                       | 1 Sep - 1 Oct  | 37        |       |        |        |
|                       |                |           |       |        |        |
| - No Apportionment -  | 1 Oct - 31 Dec | 300       | 509   | 1-Oct  | 21-Oct |
|                       |                |           |       |        |        |
| Total Allocation      | 2,000          |           |       |        |        |
| Total Mortality Taken | 2,206          |           |       |        |        |

Catch Data Through 11/17/01

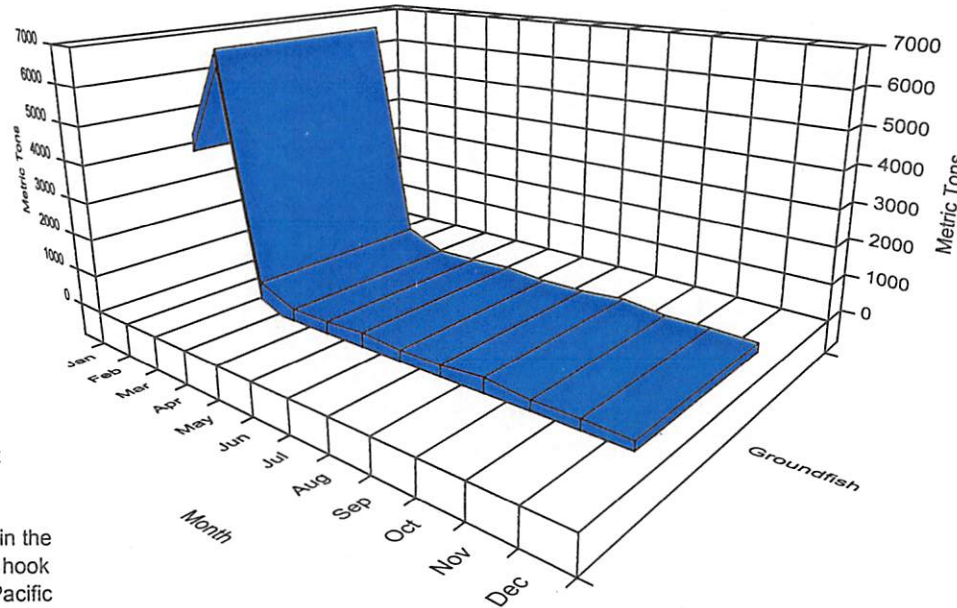
# 2001 GOA Pacific Ocean Perch & Shortraker/Rougheye Fishery



Catch Data through 11/17/01



# 2001 GOA 'Other' Hook-and-Line Fishery



The sablefish fishery is exempt from halibut bycatch restrictions. 'Other hook and line fisheries' are all H&L fisheries except GOA sablefish and demersal shelf rockfish in the Southeast District. Groundfish in the 'other hook and line' fishery is predominately from the Pacific cod target.

| Season         | Mortality Cap | Halibut Mortality Caught | Groundfish Caught | Open  | Closed |
|----------------|---------------|--------------------------|-------------------|-------|--------|
| 1 Jan - 17 May | 205           | 273                      | 11,413            | 1-Jan | 26-Feb |
| 18 May- 31 Aug | 0             | 8                        | 251               |       |        |
| 1 Sep- 31 Dec  | 85            | 5                        | 231               | 1-Sep | 4-Sep  |
| Totals         | 290           | 286                      | 11,895            |       |        |

Catch data through 11/17/01

2001 GULF OF ALASKA GROUND FISH QUOTAS  
 AND PRELIMINARY CATCH IN ROUND METRIC TONS

Data are from Weekly Production and Observer Reports through 11/17/01  
 Quotas are based on Final Specifications

|                         | TOTAL<br>CATCH | QUOTA  | REMAINING<br>QUOTA | %<br>TAKEN | LAST WK<br>CATCH |
|-------------------------|----------------|--------|--------------------|------------|------------------|
| <b>WEST, CENT PLCK</b>  |                |        |                    |            |                  |
| Pollock 610             | 30,423         | 31,056 | 633                | 98         | 0                |
| Pollock 620             | 1,733          | 8,059  | 6,326              | 22         | 0                |
| Pollock 630             | 17,014         | 23,583 | 6,569              | 72         | 0                |
| Pollock - Shelikof      | 18,895         | 18,619 | -276               | 101        | 0                |
| <b>WESTERN GULF</b>     |                |        |                    |            |                  |
| Arrowtooth Flounder     | 6,147          | 8,000  | 1,853              | 77         | 0                |
| Deep Water Flatfish     | 18             | 280    | 262                | 6          | 0                |
| Shallow Water Flatfish  | 207            | 4,500  | 4,293              | 5          | 0                |
| Flathead Sole           | 599            | 2,000  | 1,401              | 30         | 0                |
| Rex Sole                | 434            | 1,230  | 796                | 35         | 0                |
| Pacific Ocean Perch     | 947            | 1,280  | 333                | 74         | 0                |
| Shortraker/Rougheye     | 125            | 210    | 85                 | 60         | 0                |
| Pelagic Shelf Rockfish  | 121            | 550    | 429                | 22         | 0                |
| Northern Rockfish       | 539            | 600    | 61                 | 90         | 0                |
| Other Rockfish          | 25             | 20     | -5                 | 125        | 0                |
| Pacific Cod - Inshore   | 12,445         | 16,470 | 4,025              | 76         | 23               |
| Pacific Cod - Offshore  | 1,416          | 1,830  | 414                | 77         | 76               |
| Sablefish (Hook & Line) | 1,450          | 1,608  | 158                | 90         | 1                |
| Sablefish (Trawl)       | 141            | 402    | 261                | 35         | 0                |
| Thornyhead              | 274            | 420    | 146                | 65         | 0                |
| <b>CENTRAL GULF</b>     |                |        |                    |            |                  |
| Arrowtooth Flounder     | 13,373         | 25,000 | 11,627             | 53         | 1                |
| Deep Water Flatfish     | 668            | 2,710  | 2,042              | 25         | 0                |
| Shallow Water Flatfish  | 5,966          | 12,950 | 6,984              | 46         | 0                |
| Flathead Sole           | 1,311          | 5,000  | 3,689              | 26         | 0                |
| Sole                    | 2,505          | 5,660  | 3,155              | 44         | 0                |
| Pacific Ocean Perch     | 9,457          | 9,610  | 153                | 98         | 0                |
| Shortraker/Rougheye     | 973            | 930    | -43                | 105        | 1                |
| Pelagic Shelf Rockfish  | 2,437          | 4,080  | 1,643              | 60         | 0                |
| Northern rockfish       | 2,587          | 4,280  | 1,693              | 60         | 0                |
| Other Rockfish          | 333            | 740    | 407                | 45         | 0                |
| Pacific Cod - Inshore   | 25,128         | 27,225 | 2,097              | 92         | 10               |
| Pacific Cod - Offshore  | 2,067          | 3,025  | 958                | 68         | 0                |
| Sablefish (Hook & Line) | 4,432          | 4,328  | -104               | 102        | 24               |
| Sablefish (Trawl)       | 1,100          | 1,082  | -18                | 102        | 0                |
| Thornyhead              | 514            | 970    | 456                | 53         | 1                |
| <b>EASTERN GULF</b>     |                |        |                    |            |                  |
| Shortraker/Rougheye     | 846            | 590    | -256               | 143        | 5                |
| Pacific Cod - Inshore   | 132            | 3,204  | 3,072              | 4          | 1                |
| Pacific Cod - Offshore  | 0              | 356    | 356                | 0          | 0                |
| Thornyhead              | 538            | 920    | 382                | 58         | 2                |
| <b>WEST YAKUTAT</b>     |                |        |                    |            |                  |
| Arrowtooth Flounder     | 195            | 2,500  | 2,305              | 8          | 1                |
| Deep Water Flatfish     | 116            | 1,240  | 1,124              | 9          | 0                |
| Shallow Water Flatfish  | 0              | 790    | 790                | 0          | 0                |
| Flathead Sole           | 0              | 1,440  | 1,440              | 0          | 0                |
| Rex Sole                | 0              | 1,540  | 1,540              | 0          | 0                |
| Pacific Ocean Perch     | 623            | 870    | 247                | 72         | 0                |
| Other Rockfish          | 82             | 150    | 68                 | 55         | 0                |
| Pelagic Shelf Rockfish  | 439            | 580    | 141                | 76         | 0                |
| Pollock                 | 2,351          | 2,235  | -116               | 105        | 0                |
| Sablefish (Hook & Line) | 1,569          | 1,789  | 220                | 88         | 6                |
| Sablefish (Trawl)       | 168            | 271    | 103                | 62         | 0                |
| <b>SOUTHEAST</b>        |                |        |                    |            |                  |
| Arrowtooth Flounder     | 205            | 2,500  | 2,295              | 8          | 3                |
| Deep Water Flatfish     | 3              | 1,070  | 1,067              | 0          | 0                |
| Shallow Water Flatfish  | 0              | 1,160  | 1,160              | 0          | 0                |
| Flathead Sole           | 0              | 620    | 620                | 0          | 0                |
| Rex Sole                | 0              | 1,010  | 1,010              | 0          | 0                |
| Pacific Ocean Perch     | 1              | 1,750  | 1,749              | 0          | 0                |
| Other Rockfish          | 133            | 100    | -33                | 133        | 1                |
| Pelagic Shelf Rockfish  | 12             | 770    | 758                | 2          | 0                |

|                         |         |         |        |    |     |
|-------------------------|---------|---------|--------|----|-----|
| Pollock                 | 0       | 6,460   | 6,460  | 0  | 0   |
| Demersal Shelf Rockfish | 286     | 330     | 44     | 87 | 8   |
| Sablefish (Hook & Line) | 3,253   | 3,360   | 107    | 97 | 31  |
| ENTIRE GOA              |         |         |        |    |     |
| Other Species           | 4,819   | 13,619  | 8,800  | 35 | 17  |
| Atka Mackerel           | 77      | 600     | 523    | 13 | 0   |
| -----                   |         |         |        |    |     |
| TOTALS:                 | 181,652 | 280,131 | 98,479 | 65 | 214 |

2001 BERING SEA & ALEUTIANS GROUND FISH QUOTAS  
AND PRELIMINARY CATCH IN ROUND METRIC TONS

Data are from Weekly Production and Observer Reports through 11/17/01  
Quotas are based on Final Specifications

|                                   | TOTAL<br>CATCH   | QUOTA            | REMAINING<br>QUOTA | %<br>TAKEN | LAST WK<br>CATCH |
|-----------------------------------|------------------|------------------|--------------------|------------|------------------|
| <b>BERING SEA</b>                 |                  |                  |                    |            |                  |
| Other Rockfish                    | 293              | 307              | 14                 | 95         | 0                |
| Pacific Ocean Perch               | 887              | 1,471            | 584                | 60         | 0                |
| Sharpchin/Northern                | 152              | 16               | -136               | 950        | 0                |
| Shortraker/Rougheye               | 42               | 99               | 57                 | 42         | 0                |
| Sablefish (Fixed Gear)            | 483              | 624              | 141                | 77         | 10               |
| Sablefish (Trawl)                 | 349              | 663              | 314                | 53         | 0                |
| Greenland Turbot                  | 4,216            | 5,206            | 990                | 81         | 14               |
| Pollock - Inshore                 | 602,998          | 610,800          | 7,802              | 99         | 0                |
| Pollock - AFA Offshore            | 484,467          | 488,640          | 4,173              | 99         | 0                |
| Pollock - AFA Mothership          | 121,331          | 122,160          | 829                | 99         | 0                |
| Pollock - Incidental Ctch         | 35,463           | 38,400           | 2,937              | 92         | 593              |
| <b>ALEUTIAN ISLANDS</b>           |                  |                  |                    |            |                  |
| Other Rockfish                    | 591              | 575              | -16                | 103        | 1                |
| Pacific Ocean Perch, East         | 2,178            | 2,683            | 505                | 81         | 0                |
| Pacific Ocean Perch, Cent         | 2,474            | 2,368            | -106               | 104        | 0                |
| Pacific Ocean Perch, West         | 3,272            | 4,385            | 1,113              | 75         | 0                |
| Sharpchin/Northern                | 5,978            | 6,239            | 261                | 96         | 2                |
| Shortraker/Rougheye Trawl         | 479              | 590              | 111                | 81         | 0                |
| Non-Trawl                         | 225              | 253              | 28                 | 89         | 1                |
| Atka Mackerel - Eastern           | 7,904            | 7,143            | -761               | 111        | 0                |
| - Jig                             | 0                | 72               | 72                 | 0          | 0                |
| Atka Mackerel - Central           | 30,365           | 31,080           | 715                | 98         | 1                |
| Atka Mackerel - Western           | 18,264           | 25,808           | 7,544              | 71         | 0                |
| Sablefish (Fixed Gear)            | 965              | 1,500            | 535                | 64         | 10               |
| Sablefish (Trawl)                 | 39               | 531              | 492                | 7          | 0                |
| Inland Turbot                     | 1,017            | 2,564            | 1,547              | 40         | 0                |
| Pollock - Incidental Ctch         | 789              | 1,800            | 1,011              | 44         | 1                |
| <b>BERING SEA &amp; ALEUTIANS</b> |                  |                  |                    |            |                  |
| Arrowtooth Flounder               | 13,715           | 18,709           | 4,994              | 73         | 118              |
| Flathead Sole                     | 17,350           | 34,000           | 16,650             | 51         | 81               |
| Other Flatfish                    | 9,673            | 23,800           | 14,127             | 41         | 39               |
| Other Species                     | 23,599           | 22,525           | -1,074             | 105        | 535              |
| Pacific Cod (Trawl - C/P)         | 29,045           | 30,867           | 1,822              | 94         | 131              |
| Pacific Cod (Trawl - C/V)         | 21,353           | 26,867           | 5,514              | 79         | 0                |
| Pacific Cod (HAL C/P)             | 86,762           | 95,821           | 9,059              | 91         | 2,678            |
| Pacific Cod (HAL C/V)             | 609              | 665              | 56                 | 92         | 5                |
| Pacific Cod (Pot)                 | 16,272           | 17,469           | 1,197              | 93         | 182              |
| Pacific Cod (Jig)                 | 71               | 478              | 407                | 15         | 0                |
| Rock Sole                         | 29,103           | 63,750           | 34,647             | 46         | 146              |
| Squid                             | 1,401            | 1,675            | 274                | 84         | 0                |
| Yellowfin Sole                    | 59,292           | 96,050           | 36,758             | 62         | 1,338            |
| <b>BOGOSLOF</b>                   |                  |                  |                    |            |                  |
| Pollock - Incidental Ctch         | 60               | 900              | 840                | 7          | 0                |
| -----                             |                  |                  |                    |            |                  |
| <b>TOTALS:</b>                    | <b>1,633,526</b> | <b>1,789,553</b> | <b>156,027</b>     | <b>91</b>  | <b>5,886</b>     |

2001 GULF OF ALASKA REPORT ON DAP HARVEST  
BY GEAR TYPE

Data are from Weekly Production and Observer Reports through 11/17/01

|                         | TRAWL  | H&L   | POT   | OTHER | TOTAL  |
|-------------------------|--------|-------|-------|-------|--------|
| <b>WEST, CENT PLCK</b>  |        |       |       |       |        |
| Pollock 610             | 30,386 | 35    | 1     | 0     | 30,422 |
| Pollock 620             | 1,733  | 0     | 0     | 0     | 1,733  |
| Pollock 630             | 16,972 | 41    | 1     | 0     | 17,014 |
| Pollock - Shelikof      | 18,863 | 28    | 3     | 0     | 18,894 |
| <b>WESTERN GULF</b>     |        |       |       |       |        |
| Arrowtooth Flounder     | 5,966  | 179   | 2     | 0     | 6,147  |
| Deep Water Flatfish     | 13     | 6     | 0     | 0     | 19     |
| Shallow Water Flatfish  | 201    | 5     | 2     | 0     | 208    |
| Flathead Sole           | 593    | 5     | 0     | 0     | 598    |
| Rex Sole                | 434    | 0     | 0     | 0     | 434    |
| Pacific Ocean Perch     | 947    | 0     | 0     | 0     | 947    |
| Shortraker/Rougheye     | 40     | 85    | 0     | 0     | 125    |
| Pelagic Shelf Rockfish  | 119    | 1     | 1     | 0     | 121    |
| Northern Rockfish       | 537    | 0     | 2     | 0     | 539    |
| Other Rockfish          | 11     | 14    | 0     | 0     | 25     |
| Pacific Cod - Inshore   | 6,588  | 3,873 | 1,984 | 0     | 12,445 |
| Pacific Cod - Offshore  | 286    | 376   | 753   | 0     | 1,415  |
| Sablefish (Hook & Line) | 0      | 1,442 | 7     | 0     | 1,449  |
| Sablefish (Trawl)       | 141    | 0     | 0     | 0     | 141    |
| Thornyhead              | 139    | 133   | 2     | 0     | 274    |
| <b>CENTRAL GULF</b>     |        |       |       |       |        |
| Arrowtooth Flounder     | 12,979 | 392   | 2     | 0     | 13,373 |
| Deep Water Flatfish     | 660    | 8     | 0     | 0     | 668    |
| Shallow Water Flatfish  | 5,959  | 5     | 3     | 0     | 5,967  |
| Flathead Sole           | 1,300  | 11    | 0     | 0     | 1,311  |
| Rex Sole                | 2,504  | 1     | 0     | 0     | 2,505  |
| Pacific Ocean Perch     | 9,456  | 1     | 0     | 0     | 9,457  |
| Shortraker/Rougheye     | 615    | 358   | 0     | 0     | 973    |
| Pelagic Shelf Rockfish  | 2,424  | 12    | 2     | 0     | 2,438  |
| Northern rockfish       | 2,586  | 0     | 1     | 0     | 2,587  |
| Other Rockfish          | 282    | 51    | 0     | 0     | 333    |
| Pacific Cod - Inshore   | 15,954 | 5,717 | 3,458 | 0     | 25,129 |
| Pacific Cod - Offshore  | 1,475  | 4     | 588   | 0     | 2,067  |
| Sablefish (Hook & Line) | 0      | 4,431 | 1     | 0     | 4,432  |
| Sablefish (Trawl)       | 1,100  | 0     | 0     | 0     | 1,100  |
| Thornyhead              | 365    | 150   | 0     | 0     | 515    |
| <b>EASTERN GULF</b>     |        |       |       |       |        |
| Shortraker/Rougheye     | 113    | 733   | 0     | 0     | 846    |
| Pacific Cod - Inshore   | 11     | 118   | 3     | 0     | 132    |
| Pacific Cod - Offshore  | 0      | 0     | 0     | 0     | 0      |
| Thornyhead              | 18     | 520   | 0     | 0     | 538    |
| <b>WEST YAKUTAT</b>     |        |       |       |       |        |
| Arrowtooth Flounder     | 117    | 78    | 0     | 0     | 195    |
| Deep Water Flatfish     | 115    | 1     | 0     | 0     | 116    |
| Shallow Water Flatfish  | 0      | 0     | 0     | 0     | 0      |
| Flathead Sole           | 0      | 0     | 0     | 0     | 0      |
| Rex Sole                | 1      | 0     | 0     | 0     | 1      |
| Pacific Ocean Perch     | 623    | 0     | 0     | 0     | 623    |
| Other Rockfish          | 31     | 51    | 0     | 0     | 82     |
| Pelagic Shelf Rockfish  | 438    | 0     | 0     | 0     | 438    |
| Pollock                 | 2,351  | 0     | 0     | 0     | 2,351  |
| Sablefish (Hook & Line) | 0      | 1,569 | 0     | 0     | 1,569  |
| Sablefish (Trawl)       | 168    | 0     | 0     | 0     | 168    |
| <b>SOUTHEAST</b>        |        |       |       |       |        |
| Arrowtooth Flounder     | 0      | 205   | 0     | 0     | 205    |
| Deep Water Flatfish     | 0      | 3     | 0     | 0     | 3      |
| Shallow Water Flatfish  | 0      | 0     | 0     | 0     | 0      |
| Flathead Sole           | 0      | 0     | 0     | 0     | 0      |
| Rex Sole                | 0      | 0     | 0     | 0     | 0      |
| Pacific Ocean Perch     | 0      | 1     | 0     | 0     | 1      |
| Other Rockfish          | 0      | 133   | 0     | 0     | 133    |
| Pelagic Shelf Rockfish  | 0      | 12    | 0     | 0     | 12     |
| Pollock                 | 0      | 0     | 0     | 0     | 0      |

|                         |         |        |       |   |         |
|-------------------------|---------|--------|-------|---|---------|
| Demersal Shelf Rockfish | 0       | 287    | 0     | 0 | 287     |
| Sablefish (Hook & Line) | 0       | 3,253  | 0     | 0 | 3,253   |
| ENTIRE GOA              |         |        |       |   |         |
| Other Species           | 3,067   | 1,571  | 181   | 0 | 4,819   |
| Ma Mackerel             | 76      | 0      | 1     | 0 | 77      |
| -----                   |         |        |       |   |         |
| TOTALS:                 | 148,757 | 25,899 | 6,998 | 0 | 181,654 |

2001 BERING SEA & ALEUTIANS REPORT ON DAP HARVEST  
BY GEAR TYPE

Data are from Weekly Production and Observer Reports through 11/17/01

|                                   | TRAWL            | H&L            | POT           | OTHER    | TOTAL            |
|-----------------------------------|------------------|----------------|---------------|----------|------------------|
| <b>BERING SEA</b>                 |                  |                |               |          |                  |
| Other Rockfish                    | 212              | 78             | 3             | 0        | 293              |
| Pacific Ocean Perch               | 886              | 1              | 0             | 0        | 887              |
| Sharpchin/Northern                | 144              | 7              | 2             | 0        | 153              |
| Shortraker/Rougheye               | 14               | 28             | 0             | 0        | 42               |
| Sablefish (Fixed Gear)            | 0                | 402            | 81            | 0        | 483              |
| Sablefish (Trawl)                 | 349              | 0              | 0             | 0        | 349              |
| Greenland Turbot                  | 1,603            | 2,590          | 23            | 0        | 4,216            |
| Pollock - Inshore                 | 602,997          | 0              | 0             | 0        | 602,997          |
| Pollock - AFA Offshore            | 484,467          | 0              | 0             | 0        | 484,467          |
| Pollock - AFA Mothership          | 121,331          | 0              | 0             | 0        | 121,331          |
| Pollock - Incidental Ctch         | 30,962           | 4,489          | 12            | 0        | 35,463           |
| <b>ALEUTIAN ISLANDS</b>           |                  |                |               |          |                  |
| Other Rockfish                    | 377              | 214            | 0             | 0        | 591              |
| Pacific Ocean Perch, East         | 2,177            | 1              | 0             | 0        | 2,178            |
| Pacific Ocean Perch, Cent         | 2,474            | 0              | 0             | 0        | 2,474            |
| Pacific Ocean Perch, West         | 3,270            | 2              | 0             | 0        | 3,272            |
| Sharpchin/Northern                | 5,847            | 131            | 0             | 0        | 5,978            |
| Shortraker/Rougheye Trawl         | 478              | 0              | 0             | 0        | 478              |
| Non-Trawl                         | 0                | 225            | 0             | 0        | 225              |
| Atka Mackerel - Eastern           | 7,871            | 18             | 15            | 0        | 7,904            |
| - Jig                             | 0                | 0              | 0             | 0        | 0                |
| Atka Mackerel - Central           | 30,269           | 97             | 0             | 0        | 30,366           |
| Atka Mackerel - Western           | 18,109           | 155            | 1             | 0        | 18,265           |
| Sablefish (Fixed Gear)            | 0                | 898            | 68            | 0        | 966              |
| Sablefish (Trawl)                 | 39               | 0              | 0             | 0        | 39               |
| Greenland Turbot                  | 514              | 500            | 3             | 0        | 1,017            |
| Pollock - Incidental Ctch         | 712              | 72             | 4             | 0        | 788              |
| <b>BERING SEA &amp; ALEUTIANS</b> |                  |                |               |          |                  |
| Arrowtooth Flounder               | 12,283           | 1,405          | 26            | 0        | 13,714           |
| Flathead Sole                     | 17,136           | 214            | 0             | 0        | 17,350           |
| Other Flatfish                    | 9,587            | 86             | 1             | 0        | 9,674            |
| Other Species                     | 10,806           | 12,334         | 460           | 0        | 23,600           |
| Pacific Cod (Trawl - C/P)         | 29,046           | 0              | 0             | 0        | 29,046           |
| Pacific Cod (Trawl - C/V)         | 21,353           | 0              | 0             | 0        | 21,353           |
| Pacific Cod (HAL C/P)             | 0                | 86,761         | 0             | 0        | 86,761           |
| Pacific Cod (HAL C/V)             | 0                | 610            | 0             | 0        | 610              |
| Pacific Cod (Pot)                 | 0                | 0              | 16,272        | 0        | 16,272           |
| Pacific Cod (Jig)                 | 0                | 71             | 0             | 0        | 71               |
| Rock Sole                         | 29,071           | 29             | 2             | 0        | 29,102           |
| Squid                             | 1,400            | 0              | 1             | 0        | 1,401            |
| Yellowfin Sole                    | 58,726           | 519            | 46            | 0        | 59,291           |
| <b>BOGOSLOF</b>                   |                  |                |               |          |                  |
| Pollock - Incidental Ctch         | 36               | 23             | 0             | 0        | 59               |
| -----                             |                  |                |               |          |                  |
| <b>TOTALS:</b>                    | <b>1,504,546</b> | <b>111,960</b> | <b>17,020</b> | <b>0</b> | <b>1,633,526</b> |

2001 GULF OF ALASKA GROUND FISH DISCARDS IN ROUND METRIC TONS  
Data are from Weekly Production and Observer Reports through 11/17/01

|                         | SHORESIDE   |             |            | MOTHERSHIP  |      | CATCHER-PROC |      |
|-------------------------|-------------|-------------|------------|-------------|------|--------------|------|
|                         | TOTAL CATCH | AT-SEA DISC | PLANT DISC | TOTAL CATCH | DISC | TOTAL CATCH  | DISC |
| <b>WEST, CENT PLCK</b>  |             |             |            |             |      |              |      |
| Pollock 610             | 30319       | 86          | 0          | 0           | 0    | 104          | 37   |
| Pollock 620             | 1715        | 35          | 0          | 0           | 0    | 17           | 0    |
| Pollock 630             | 16964       | 303         | 0          | 0           | 0    | 50           | 11   |
| Pollock - Shelikof      | 18895       | 166         | 0          | 0           | 0    | 0            | 0    |
| <b>WESTERN GULF</b>     |             |             |            |             |      |              |      |
| Arrowtooth Flounder     | 757         | 556         | 0          | 0           | 0    | 5390         | 2414 |
| Deep Water Flatfish     | 1           | 1           | 0          | 0           | 0    | 18           | 12   |
| Shallow Water Flatfish  | 59          | 58          | 0          | 0           | 0    | 148          | 20   |
| Flathead Sole           | 102         | 20          | 0          | 0           | 0    | 496          | 80   |
| Rex Sole                | 3           | 1           | 0          | 0           | 0    | 432          | 17   |
| Pacific Ocean Perch     | 1           | 0           | 0          | 0           | 0    | 946          | 243  |
| Shortraker/Rougheye     | 47          | 45          | 0          | 0           | 0    | 78           | 18   |
| Pelagic Shelf Rockfish  | 11          | 11          | 0          | 0           | 0    | 110          | 15   |
| Northern Rockfish       | 36          | 36          | 0          | 0           | 0    | 504          | 136  |
| Other Rockfish          | 11          | 5           | 0          | 0           | 0    | 15           | 10   |
| Pacific Cod - Inshore   | 8315        | 105         | 0          | 0           | 0    | 4130         | 97   |
| Pacific Cod - Offshore  | 0           | 0           | 0          | 0           | 0    | 1415         | 12   |
| Sablefish (Hook & Line) | 881         | 26          | 0          | 0           | 0    | 568          | 12   |
| Sablefish (Trawl)       | 0           | 0           | 0          | 0           | 0    | 140          | 82   |
| Thornyhead              | 84          | 4           | 0          | 0           | 0    | 190          | 8    |
| <b>CENTRAL GULF</b>     |             |             |            |             |      |              |      |
| Arrowtooth Flounder     | 8468        | 5679        | 0          | 0           | 0    | 4904         | 4259 |
| Deep Water Flatfish     | 518         | 35          | 0          | 0           | 0    | 150          | 145  |
| Shallow Water Flatfish  | 5721        | 400         | 0          | 0           | 0    | 246          | 107  |
| Flathead Sole           | 1030        | 110         | 0          | 0           | 0    | 281          | 50   |
| Rex Sole                | 339         | 81          | 0          | 0           | 0    | 2166         | 60   |
| Pacific Ocean Perch     | 3966        | 69          | 0          | 0           | 0    | 5491         | 604  |
| Shortraker/Rougheye     | 416         | 321         | 0          | 0           | 0    | 557          | 22   |
| Pelagic Shelf Rockfish  | 1413        | 30          | 0          | 0           | 0    | 1025         | 68   |
| Northern rockfish       | 1463        | 57          | 0          | 0           | 0    | 1124         | 322  |
| Other Rockfish          | 86          | 16          | 0          | 0           | 0    | 247          | 206  |
| Pacific Cod - Inshore   | 24299       | 1606        | 0          | 0           | 0    | 830          | 42   |
| Pacific Cod - Offshore  | 0           | 0           | 0          | 0           | 0    | 2067         | 18   |
| Sablefish (Hook & Line) | 3884        | 137         | 0          | 0           | 0    | 549          | 6    |
| Sablefish (Trawl)       | 580         | 179         | 0          | 0           | 0    | 520          | 216  |
| Thornyhead              | 228         | 28          | 0          | 0           | 0    | 287          | 44   |
| <b>EASTERN GULF</b>     |             |             |            |             |      |              |      |
| Shortraker/Rougheye     | 742         | 182         | 0          | 0           | 0    | 104          | 8    |
| Pacific Cod - Inshore   | 132         | 24          | 0          | 0           | 0    | 0            | 0    |
| Pacific Cod - Offshore  | 0           | 0           | 0          | 0           | 0    | 0            | 0    |
| Thornyhead              | 516         | 18          | 0          | 0           | 0    | 22           | 2    |
| <b>WEST YAKUTAT</b>     |             |             |            |             |      |              |      |
| Arrowtooth Flounder     | 164         | 159         | 0          | 0           | 0    | 31           | 30   |
| Deep Water Flatfish     | 114         | 1           | 0          | 0           | 0    | 2            | 2    |
| Shallow Water Flatfish  | 0           | 0           | 0          | 0           | 0    | 0            | 0    |
| Flathead Sole           | 0           | 0           | 0          | 0           | 0    | 0            | 0    |
| Rex Sole                | 0           | 0           | 0          | 0           | 0    | 0            | 0    |
| Pacific Ocean Perch     | 16          | 1           | 0          | 0           | 0    | 607          | 2    |
| Other Rockfish          | 56          | 5           | 0          | 0           | 0    | 26           | 26   |
| Pelagic Shelf Rockfish  | 5           | 2           | 0          | 0           | 0    | 434          | 0    |
| Pollock                 | 2349        | 22          | 0          | 0           | 0    | 2            | 2    |
| Sablefish (Hook & Line) | 1468        | 32          | 0          | 0           | 0    | 101          | 2    |
| Sablefish (Trawl)       | 14          | 4           | 0          | 0           | 0    | 153          | 0    |
| <b>SOUTHEAST</b>        |             |             |            |             |      |              |      |
| Arrowtooth Flounder     | 202         | 202         | 0          | 0           | 0    | 3            | 3    |
| Deep Water Flatfish     | 2           | 2           | 0          | 0           | 0    | 1            | 1    |
| Shallow Water Flatfish  | 0           | 0           | 0          | 0           | 0    | 0            | 0    |
| Flathead Sole           | 0           | 0           | 0          | 0           | 0    | 0            | 0    |
| Rex Sole                | 0           | 0           | 0          | 0           | 0    | 0            | 0    |
| Pacific Ocean Perch     | 1           | 1           | 0          | 0           | 0    | 0            | 0    |
| Other Rockfish          | 133         | 3           | 0          | 0           | 0    | 1            | 0    |
| Pelagic Shelf Rockfish  | 12          | 0           | 0          | 0           | 0    | 0            | 0    |
| Pollock                 | 0           | 0           | 0          | 0           | 0    | 0            | 0    |



|                         |        |       |   |   |   |       |       |
|-------------------------|--------|-------|---|---|---|-------|-------|
| Demersal Shelf Rockfish | 287    | 2     | 0 | 0 | 0 | 0     | 0     |
| Sablefish (Hook & Line) | 3110   | 66    | 0 | 0 | 0 | 142   | 0     |
| ENTIRE GOA              |        |       |   |   |   |       |       |
| Other Species           | 3880   | 2936  | 0 | 0 | 0 | 938   | 924   |
| Atka Mackerel           | 12     | 12    | 0 | 0 | 0 | 65    | 7     |
| -----                   |        |       |   |   |   |       |       |
| TOTALS:                 | 143827 | 13880 | 0 | 0 | 0 | 37827 | 10402 |

2001 BERING SEA & ALEUTIANS GROUND FISH DISCARDS IN ROUND METRIC TONS  
Data are from Weekly Production and Observer Reports through 11/17/01

|                                   | SHORESIDE   |             |            | MOTHERSHIP  |      | CATCHER-PROC |       |
|-----------------------------------|-------------|-------------|------------|-------------|------|--------------|-------|
|                                   | TOTAL CATCH | AT-SEA DISC | PLANT DISC | TOTAL CATCH | DISC | TOTAL CATCH  | DISC  |
| <b>BERING SEA</b>                 |             |             |            |             |      |              |       |
| Other Rockfish                    | 42          | 11          | 0          | 0           | 0    | 250          | 45    |
| Pacific Ocean Perch               | 176         | 93          | 0          | 28          | 22   | 684          | 377   |
| Sharpchin/Northern                | 9           | 9           | 0          | 13          | 10   | 131          | 119   |
| Shortraker/Rougheye               | 2           | 2           | 0          | 1           | 1    | 39           | 13    |
| Sablefish (Fixed Gear)            | 342         | 21          | 0          | 0           | 0    | 141          | 58    |
| Sablefish (Trawl)                 | 14          | 2           | 0          | 4           | 0    | 332          | 21    |
| Greenland Turbot                  | 262         | 120         | 0          | 2           | 2    | 3953         | 515   |
| Pollock - Inshore                 | 602997      | 220         | 0          | 0           | 0    | 0            | 0     |
| Pollock - AFA Offshore            | 0           | 0           | 0          | 0           | 0    | 484467       | 177   |
| Pollock - AFA Mothership          | 0           | 0           | 0          | 121331      | 412  | 0            | 0     |
| Pollock - Incidental Ctch         | 1850        | 1070        | 0          | 73          | 39   | 33540        | 14466 |
| <b>ALEUTIAN ISLANDS</b>           |             |             |            |             |      |              |       |
| Other Rockfish                    | 76          | 9           | 0          | 1           | 1    | 514          | 262   |
| Pacific Ocean Perch, East         | 1           | 1           | 0          | 0           | 0    | 2177         | 305   |
| Pacific Ocean Perch, Cent         | 0           | 0           | 0          | 0           | 0    | 2474         | 450   |
| Pacific Ocean Perch, West         | 0           | 0           | 0          | 0           | 0    | 3272         | 582   |
| Sharpchin/Northern                | 4           | 4           | 0          | 8           | 8    | 5966         | 5795  |
| Shortraker/Rougheye Trawl         | 0           | 0           | 0          | 0           | 0    | 478          | 89    |
| Non-Trawl                         | 10          | 3           | 0          | 0           | 0    | 215          | 154   |
| Atka Mackerel - Eastern           | 66          | 53          | 0          | 24          | 16   | 7813         | 347   |
| - Jig                             | 0           | 0           | 0          | 0           | 0    | 0            | 0     |
| Atka Mackerel - Central           | 0           | 0           | 0          | 0           | 0    | 30366        | 3107  |
| Atka Mackerel - Western           | 0           | 0           | 0          | 0           | 0    | 18264        | 653   |
| Sablefish (Fixed Gear)            | 677         | 19          | 0          | 0           | 0    | 289          | 5     |
| Sablefish (Trawl)                 | 0           | 0           | 0          | 0           | 0    | 39           | 2     |
| Greenland Turbot                  | 230         | 183         | 0          | 0           | 0    | 786          | 78    |
| Pollock - Incidental Ctch         | 174         | 169         | 0          | 1           | 0    | 614          | 209   |
| <b>BERING SEA &amp; ALEUTIANS</b> |             |             |            |             |      |              |       |
| Arrowtooth Flounder               | 539         | 409         | 0          | 137         | 129  | 13038        | 7945  |
| Flathead Sole                     | 705         | 274         | 0          | 145         | 67   | 16499        | 2843  |
| Other Flatfish                    | 149         | 88          | 0          | 28          | 22   | 9497         | 8699  |
| Other Species                     | 1352        | 1218        | 0          | 157         | 156  | 22090        | 19558 |
| Pacific Cod (Trawl - C/P)         | 0           | 0           | 0          | 0           | 0    | 29046        | 770   |
| Pacific Cod (Trawl - C/V)         | 16745       | 53          | 0          | 4608        | 153  | 0            | 0     |
| Pacific Cod (HAL C/P)             | 0           | 0           | 0          | 0           | 0    | 86761        | 1330  |
| Pacific Cod (HAL C/V)             | 610         | 24          | 0          | 0           | 0    | 0            | 0     |
| Pacific Cod (Pot)                 | 11800       | 30          | 0          | 1364        | 0    | 3108         | 25    |
| Pacific Cod (Jig)                 | 71          | 0           | 0          | 0           | 0    | 0            | 0     |
| Rock Sole                         | 1217        | 674         | 0          | 182         | 95   | 27704        | 9073  |
| Squid                             | 1208        | 434         | 0          | 3           | 3    | 189          | 159   |
| Yellowfin Sole                    | 343         | 253         | 0          | 9           | 8    | 58940        | 8202  |
| <b>BOGOSLOF</b>                   |             |             |            |             |      |              |       |
| Pollock - Incidental Ctch         | 1           | 0           | 0          | 0           | 0    | 59           | 27    |
| <b>TOTALS:</b>                    |             |             |            |             |      |              |       |
|                                   | 641672      | 5446        | 0          | 128119      | 1144 | 863735       | 86460 |

NMFS/AKR  
11/26/01  
09:57:20

2001 GULF OF ALASKA FISHERIES  
TRAWL HALIBUT BYCATCH MORTALITY (METRIC TONS)  
Week Ending: 11/17/01

| WED      | SHALLOW WATER COMPLEX |                  | DEEP WATER COMPLEX |                  | GRAND TOTAL |
|----------|-----------------------|------------------|--------------------|------------------|-------------|
|          | WEEK TOTAL            | CUMULATIVE TOTAL | WEEK TOTAL         | CUMULATIVE TOTAL |             |
| 01/06/01 | 8                     | 8                | 0                  | 0                | 8           |
| 01/20/01 | 0                     | 8                | 0                  | 0                | 8           |
| 01/27/01 | 15                    | 23               | 0                  | 0                | 23          |
| 02/03/01 | 29                    | 53               | 5                  | 5                | 57          |
| 02/10/01 | 46                    | 98               | 7                  | 12               | 110         |
| 02/17/01 | 47                    | 145              | 3                  | 15               | 160         |
| 02/24/01 | 52                    | 197              | 3                  | 18               | 215         |
| 03/03/01 | 35                    | 232              | 4                  | 23               | 254         |
| 03/10/01 | 17                    | 249              | 14                 | 37               | 286         |
| 03/17/01 | 3                     | 251              | 12                 | 49               | 301         |
| 03/24/01 | 20                    | 272              | 7                  | 56               | 328         |
| 03/31/01 | 22                    | 294              | 9                  | 65               | 359         |
| 04/07/01 | 5                     | 299              | 33                 | 98               | 397         |
| 04/14/01 | 69                    | 368              | 20                 | 119              | 486         |
| 04/21/01 | 97                    | 464              | 30                 | 149              | 613         |
| 04/28/01 | 37                    | 501              | 29                 | 178              | 679         |
| 05/05/01 | 0                     | 501              | 49                 | 226              | 728         |
| 05/12/01 | 0                     | 501              | 56                 | 282              | 784         |
| 05/19/01 | 0                     | 501              | 71                 | 353              | 855         |
| 05/26/01 | 75                    | 577              | 39                 | 392              | 969         |
| 06/02/01 | 7                     | 584              | 0                  | 392              | 976         |
| 06/09/01 | 0                     | 584              | 0                  | 392              | 976         |
| 06/16/01 | 22                    | 606              | 0                  | 392              | 999         |
| 06/23/01 | 13                    | 619              | 0                  | 392              | 1,011       |
| 06/30/01 | 14                    | 633              | 0                  | 392              | 1,026       |
| 07/07/01 | 2                     | 636              | 157                | 550              | 1,185       |
| 07/14/01 | 0                     | 636              | 106                | 656              | 1,292       |
| 07/21/01 | 0                     | 636              | 95                 | 751              | 1,387       |
| 07/28/01 | 116                   | 752              | 12                 | 763              | 1,515       |
| 08/04/01 | 73                    | 825              | 0                  | 763              | 1,588       |
| 08/11/01 | 3                     | 828              | 0                  | 763              | 1,591       |
| 08/25/01 | 2                     | 830              | 0                  | 763              | 1,593       |
| 09/01/01 | 6                     | 836              | 0                  | 763              | 1,599       |
| 09/08/01 | 96                    | 932              | 0                  | 763              | 1,695       |
| 09/15/01 | 1                     | 933              | 0                  | 763              | 1,696       |
| 09/22/01 | 0                     | 933              | 0                  | 763              | 1,696       |
| 10/06/01 | 111                   | 1044             | 14                 | 777              | 1,821       |
| 10/13/01 | 201                   | 1245             | 19                 | 797              | 2,042       |
| 10/20/01 | 114                   | 1359             | 3                  | 800              | 2,159       |
| 10/27/01 | 47                    | 1405             | 0                  | 800              | 2,206       |
| 11/03/01 | 0                     | 1405             | 0                  | 800              | 2,206       |

| SEASONAL HALIBUT BYCATCH MORTALITY CAPS |                      |              |         |
|---|----------------------|--------------|---------|
| SEASON                                  | SHALLOW COMPLEX      | DEEP COMPLEX | TOTAL   |
| Jan 01 - Apr 01                         | 450 MT               | 100 MT       | 550 MT  |
| Apr 01 - Jul 01                         | 150 MT               | 300 MT       | 450 MT  |
| Jul 01 - Sep 01                         | 200 MT               | 400 MT       | 600 MT  |
| Sep 01 - Oct 01                         | 100 MT               | Any rollover | 100 MT  |
| Oct 01 - Dec 31                         | - No Apportionment - | -            | 300 MT  |
| TOTALS                                  | 900 MT               | 800 MT       | 2000 MT |

Balance of 4th Quarter available for all trawl fisheries

Shallow Water Complex = pollock, Pacific cod, shallow-water flatfish, flathead sole, Atka mackerel, and "other species."  
Deep Water Complex = sablefish, rockfish, rex sole, arrowtooth flounder, and deep-water flatfish.

NMFS/AKR  
11/26/01  
09:57:19

2001 GULF OF ALASKA FISHERIES  
HOOK & LINE HALIBUT BYCATCH MORTALITY (METRIC TONS)  
Week Ending: 11/17/01

OTHER HOOK & LINE  
FISHERIES

| WED                | WEEKLY | TOTAL |
|--------------------|--------|-------|
| 01/06/01           | 25     | 25    |
| 01/13/01           | 45     | 71    |
| 01/20/01           | 20     | 91    |
| 01/27/01           | 19     | 109   |
| 02/03/01           | 31     | 140   |
| 02/10/01           | 43     | 184   |
| 02/17/01           | 25     | 208   |
| 02/24/01           | 53     | 261   |
| 03/03/01           | 4      | 265   |
| 03/10/01           | 1      | 266   |
| 03/17/01           | 0      | 266   |
| 03/24/01           | 0      | 266   |
| 03/31/01           | 0      | 266   |
| 04/07/01           | 0      | 267   |
| 04/14/01           | 2      | 269   |
| 04/21/01           | 0      | 269   |
| 04/28/01           | 0      | 269   |
| 05/05/01           | 0      | 269   |
| 05/12/01           | 0      | 269   |
| 05/19/01           | 0      | 270   |
| 05/26/01           | 3      | 273   |
| 06/02/01           | 1      | 273   |
| 06/09/01           | 0      | 274   |
| 06/16/01           | 2      | 275   |
| 06/23/01           | 1      | 276   |
| 06/30/01           | 0      | 276   |
| 07/07/01           | 0      | 277   |
| 07/14/01           | 1      | 277   |
| 07/21/01           | 1      | 278   |
| 07/28/01           | 1      | 279   |
| 08/04/01           | 1      | 280   |
| 08/11/01           | 1      | 280   |
| 08/18/01           | 0      | 281   |
| 08/25/01           | 0      | 281   |
| 09/01/01           | 1      | 281   |
| 09/08/01           | 3      | 284   |
| 09/15/01           | 0      | 284   |
| 09/22/01           | 0      | 284   |
| 09/29/01           | 0      | 285   |
| 10/06/01           | 0      | 285   |
| 10/13/01           | 0      | 285   |
| 10/20/01           | 0      | 285   |
| 10/27/01           | 0      | 285   |
| 11/03/01           | 0      | 285   |
| 11/10/01           | 0      | 286   |
| 11/17/01           | 0      | 286   |
| CAP:               |        | 290   |
| % OF SEASONAL CAP: |        | 99%   |
| REMAINING:         |        | 4     |

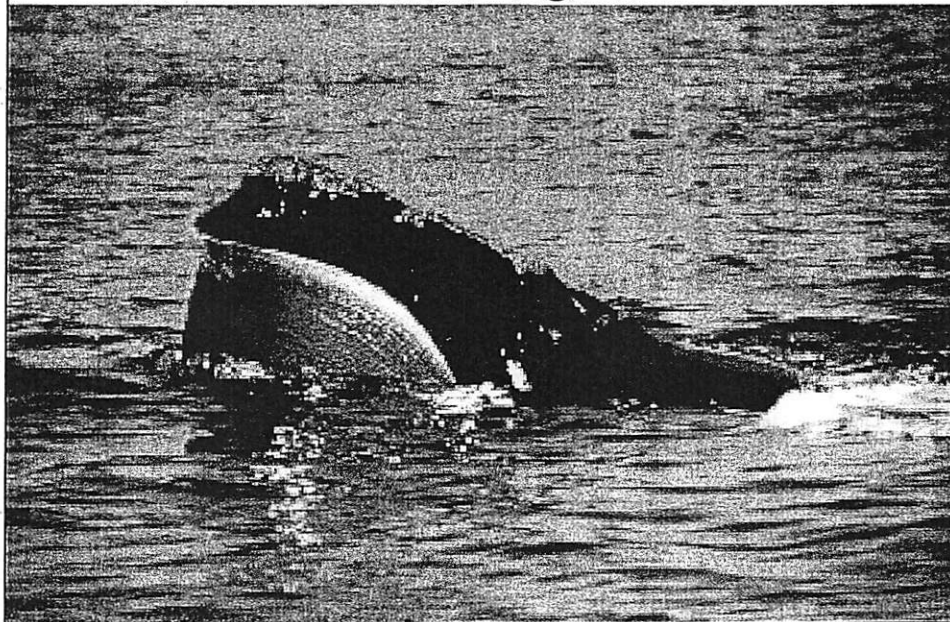
2001 HOOK-AND-LINE GROUND FISH FISHERIES HALIBUT MORTALITY CAPS

| SEASON          | OTHER HOOK AND LINE<br>FISHERIES |
|-----------------|----------------------------------|
| Jan 01 - May 17 | 205 MT                           |
| May 18 - Aug 31 | 0 MT                             |
| Sep 01 - Dec 31 | 85 MT                            |
| Annual Total:   | 290 MT                           |

Sablefish fishery is exempt from halibut bycatch restrictions.  
Other hook and line fisheries are all H&L fisheries except  
sablefish and demersal shelf rockfish in the Southeast District.

Halibut mortality for the demersal shelf rockfish fishery,

## North Pacific Right Whales

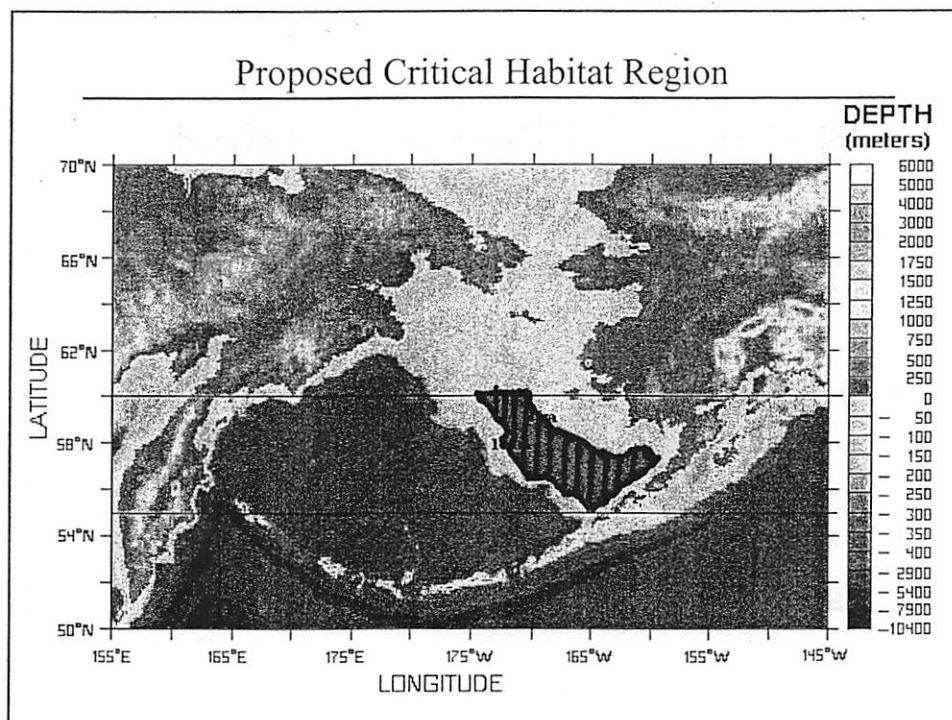


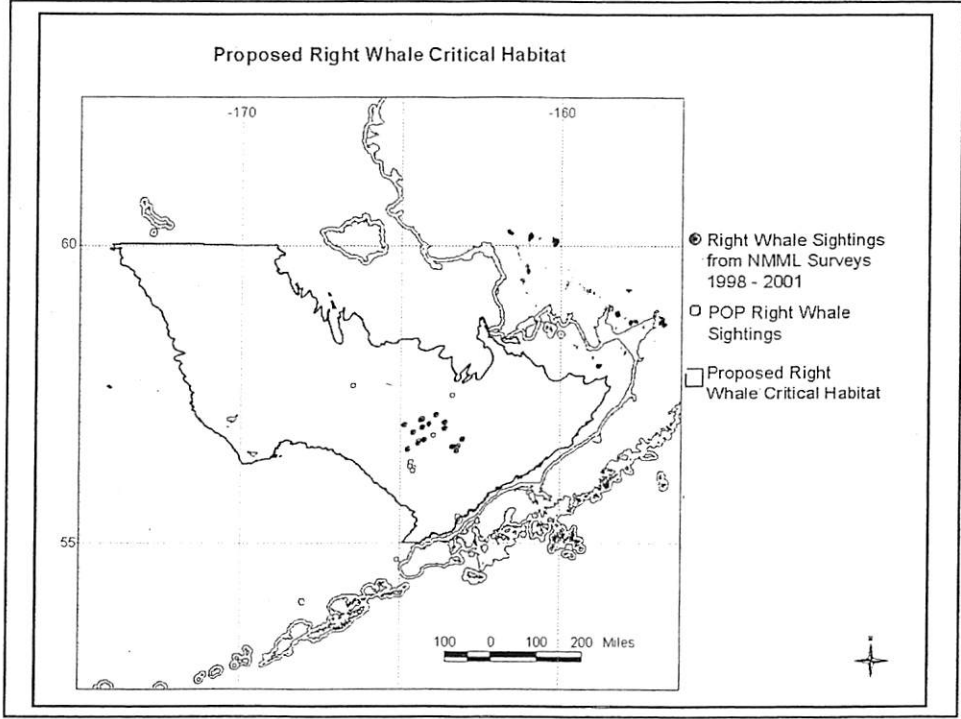
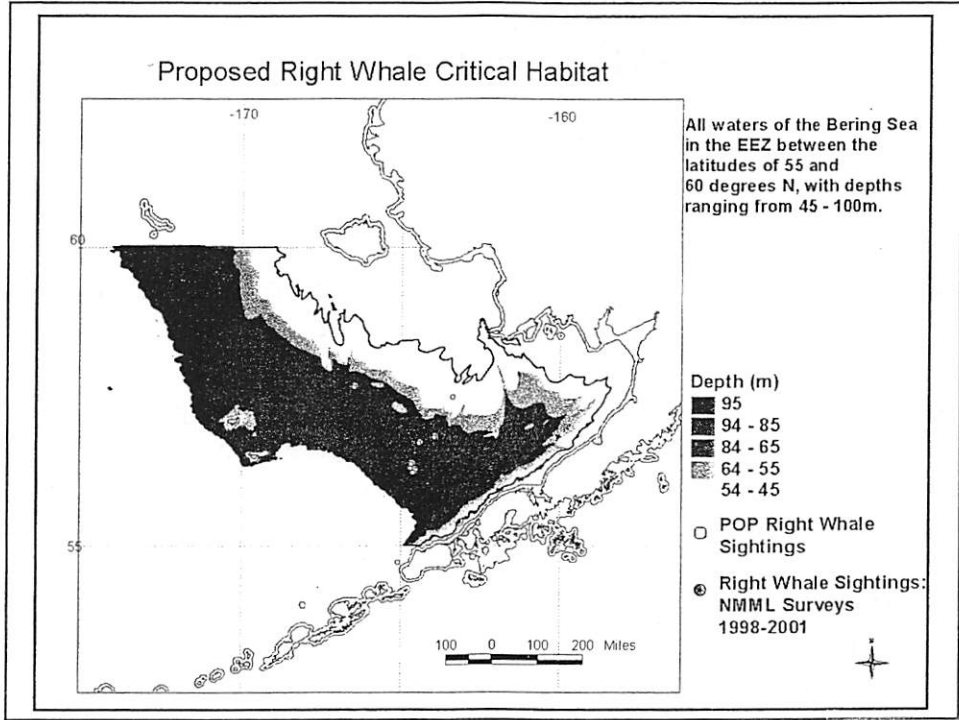
### Status and Plans for Critical Habitat Petition North Pacific Right Whale

- October 13, 2000
  - NMFS received a petition dated October 4, 2000 to revise the critical habitat designation for northern right whales under the ESA.
- Eastern Bering Sea

## Right Whale Critical Habitat Petition

- June 1, 2001
  - NMFS published a 90-day notice finding the subject petition contained substantial scientific information indicating that revision of critical habitat for the right whale may be warranted.
- June 1-August 1, 2001
  - 60-day comment period on petition
- October 25, 2001
  - NMFS receives a 60-day Notice of Intent to Sue for failure to publish determination on petition.





## **NMFS Determination**

Designation of right whale critical habitat as petitioned is not warranted at this time

The boundaries of the area containing physical and biological features essential to the conservation of this species cannot be accurately determined from existing information

Continue directed research to collect data on this species and its distribution in order to identify essential habitat boundaries

Conduct an economic assessment of designation