

# Whale depredation estimate update



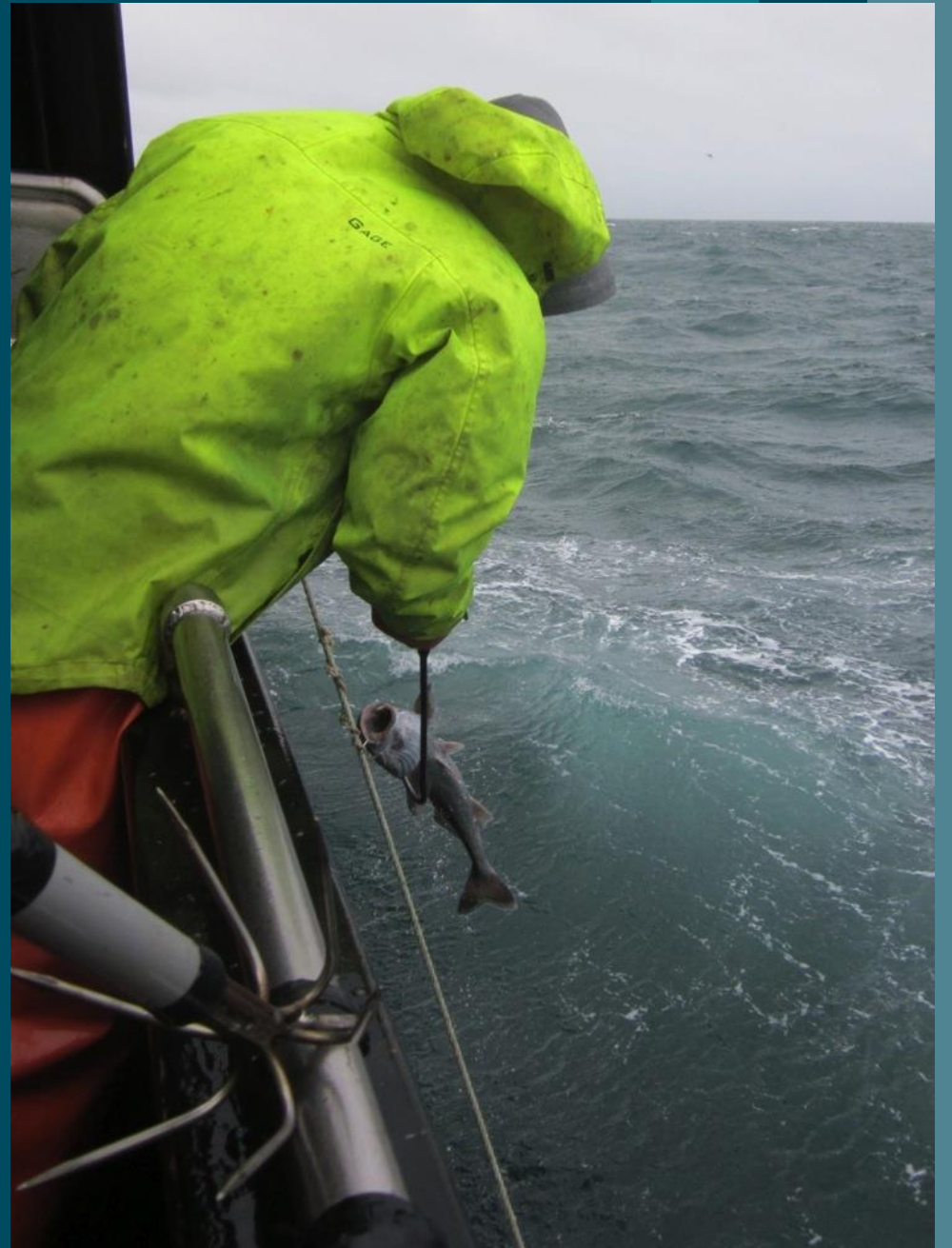
**Megan Williams, Daniel Goethel  
Dana Hanselman, Cara Rodgveller  
Chris Lunsford, Ben Williams**





# Whale depredation in the sablefish assessment

1. Longline survey
2. Commercial fishery
  - a) Catch Per Unit Effort (CPUE) reductions
  - b) Proportion of sets depredated based on fishery characteristics
  - c) Sablefish mortality due to depredation on commercial fishery

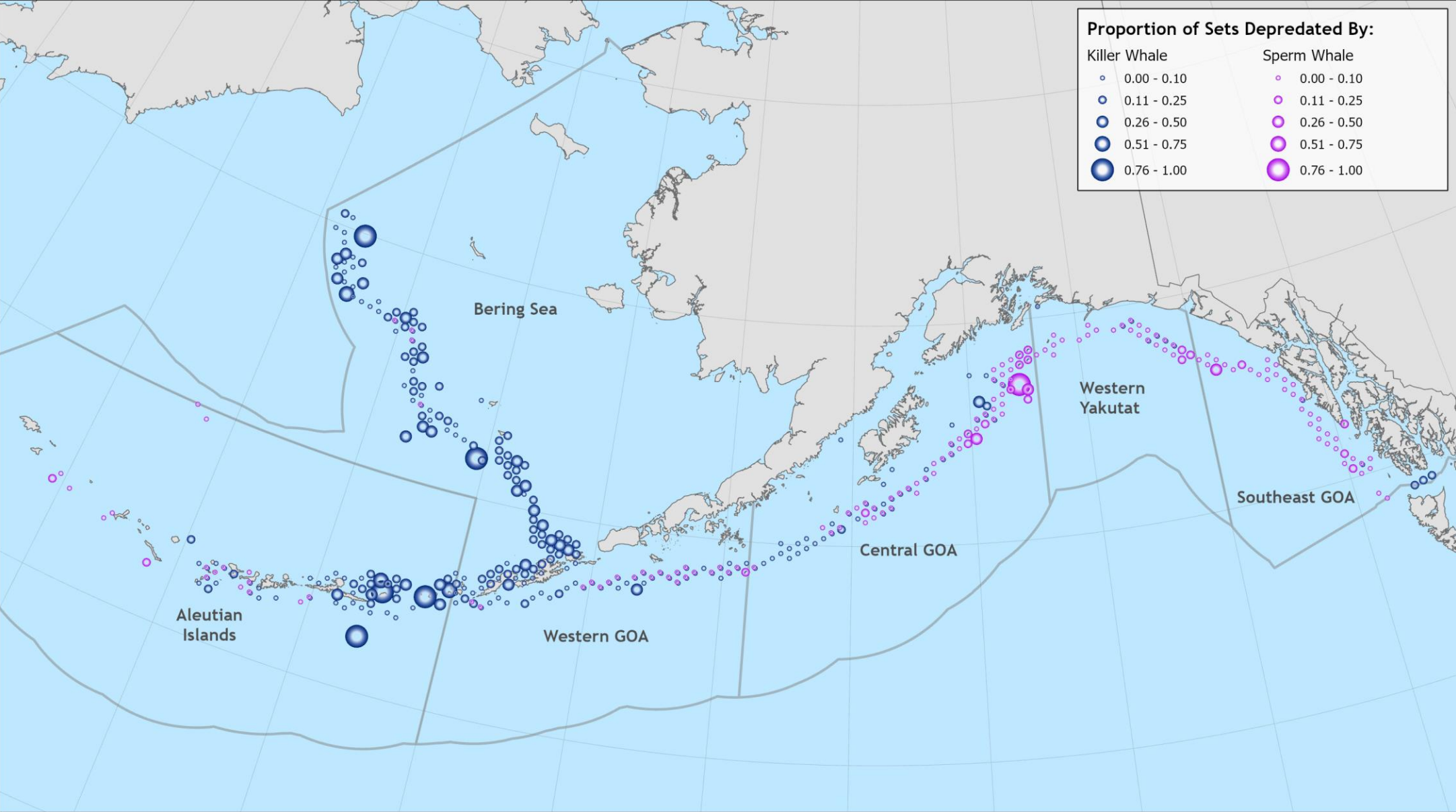


# DATA

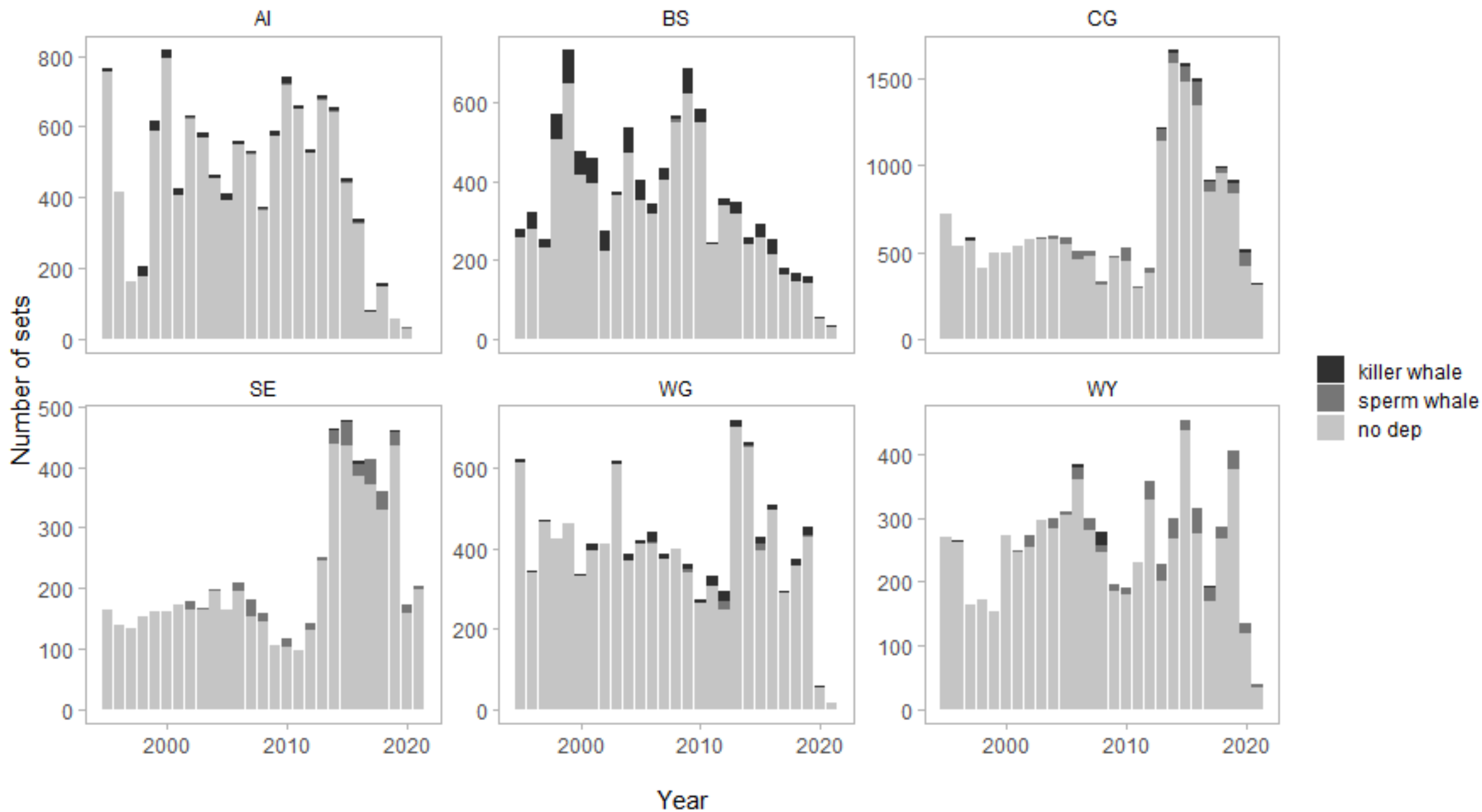
- **Observer data** – IFQ longline sablefish target, 1995-2021 (n=61,035 unique sets)
  - Marine mammal interactions documented (most of the time)
  - #Observed sets declined in all areas ~2017-2019
- **Catch in area data** –NMFS blended Catch in Areas database (based on processor system pre-2003, electronic logbook, observer and VMS data 2003 on; n=13,679 years/grids with catch data)



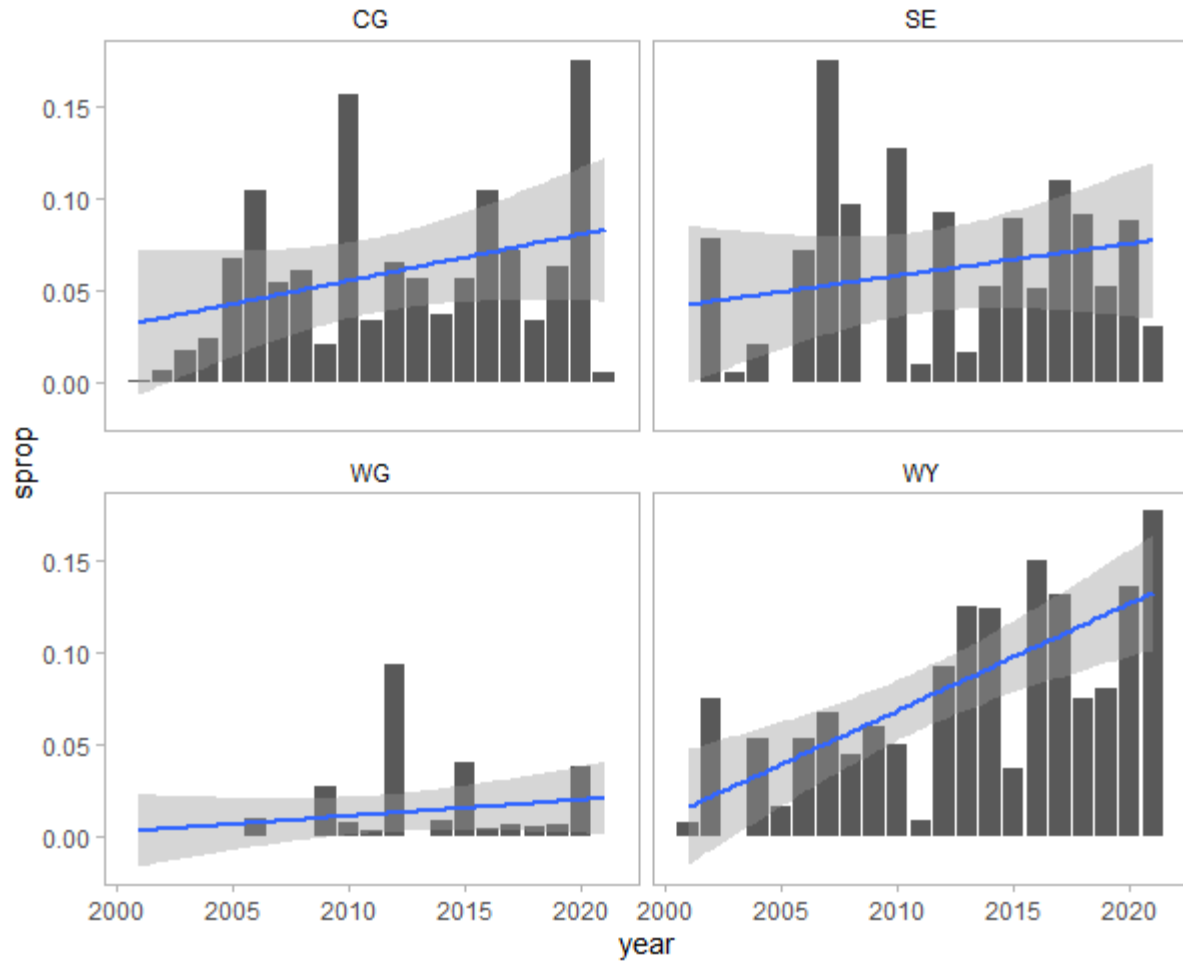
# Sperm whale and killer whale depredation on the commercial longline sablefish fishery, 1995-2021



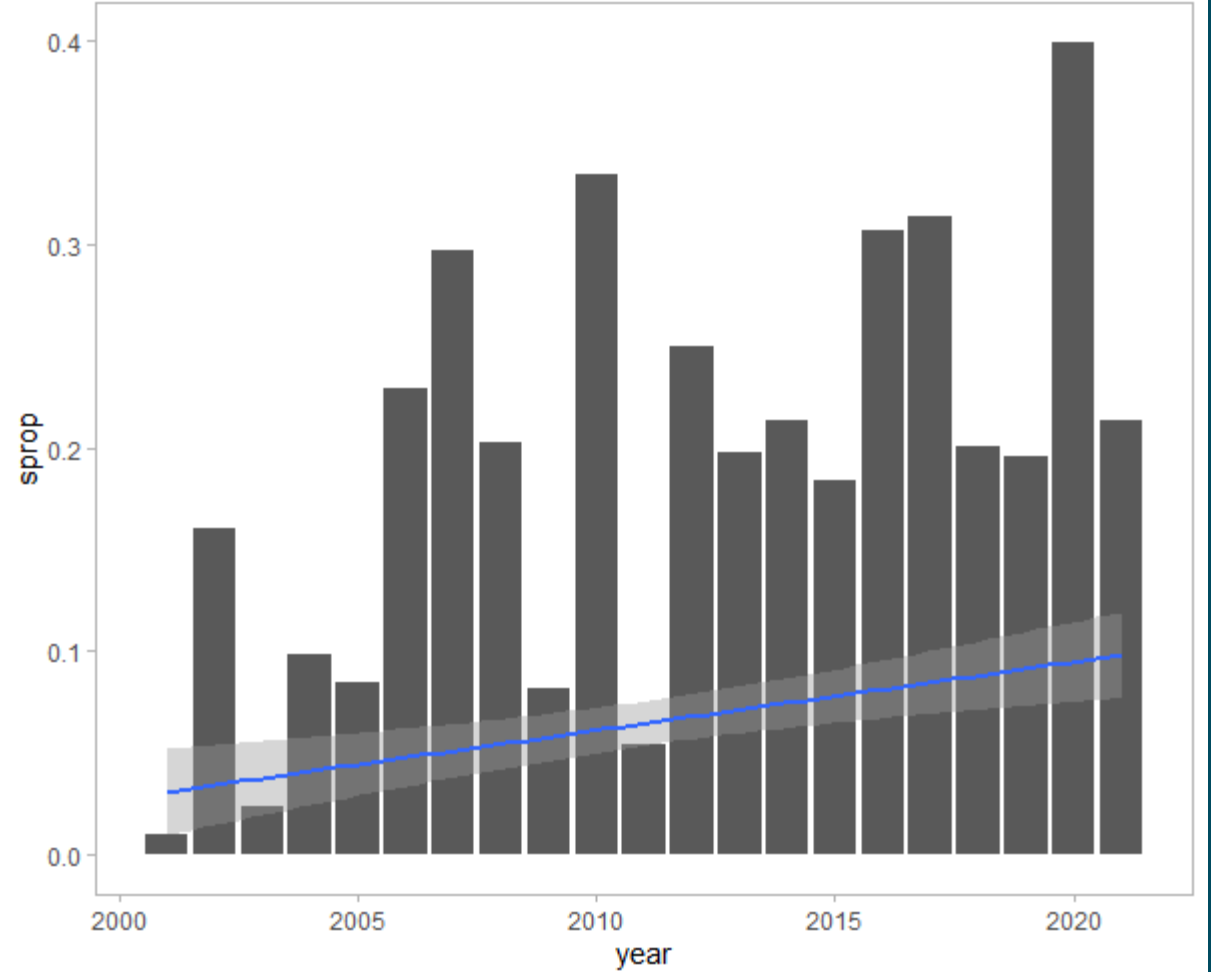
# Total Sets Observed and Depredated by Whales



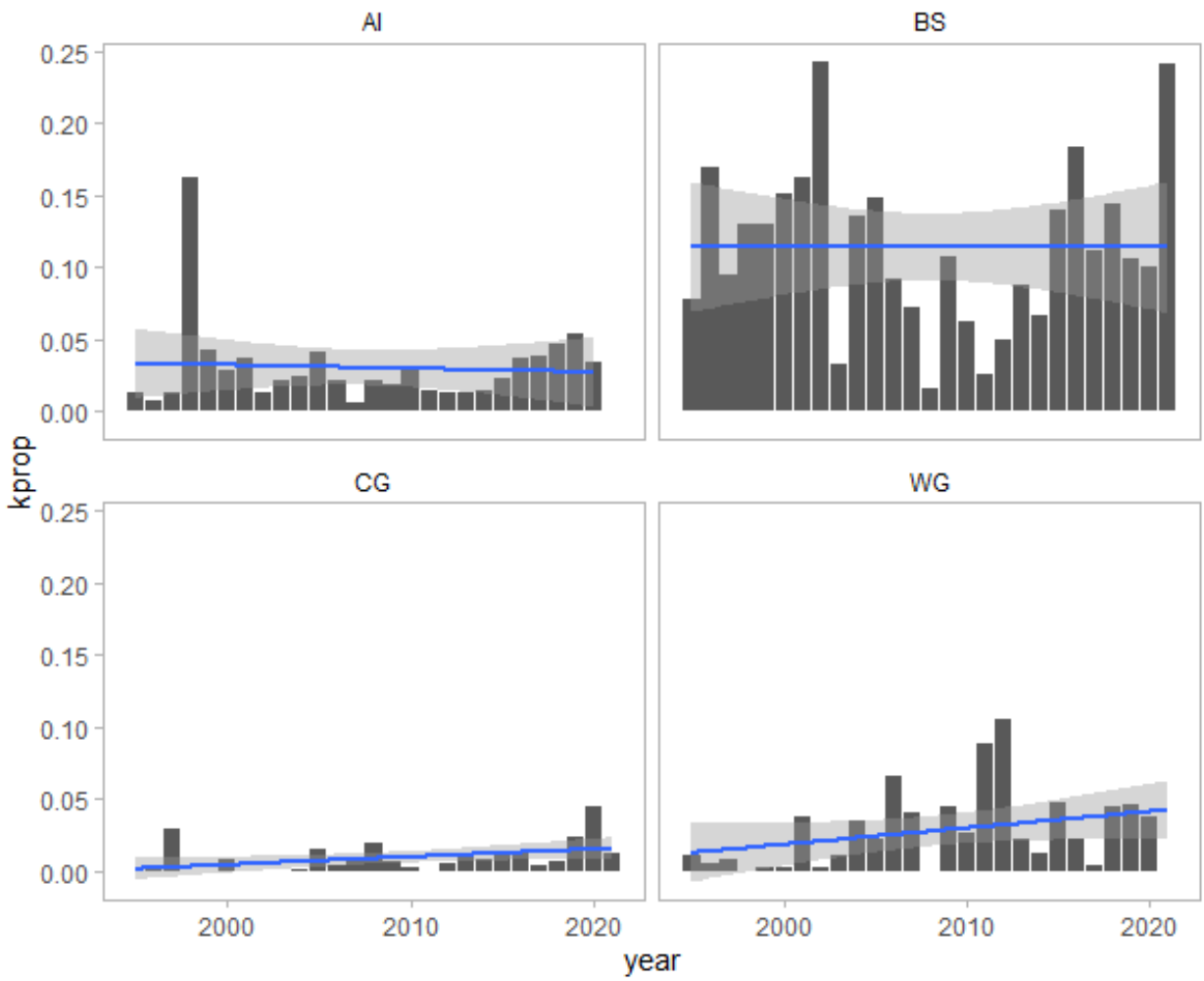
Proportion Observed Sets Depredated by Sperm Whales



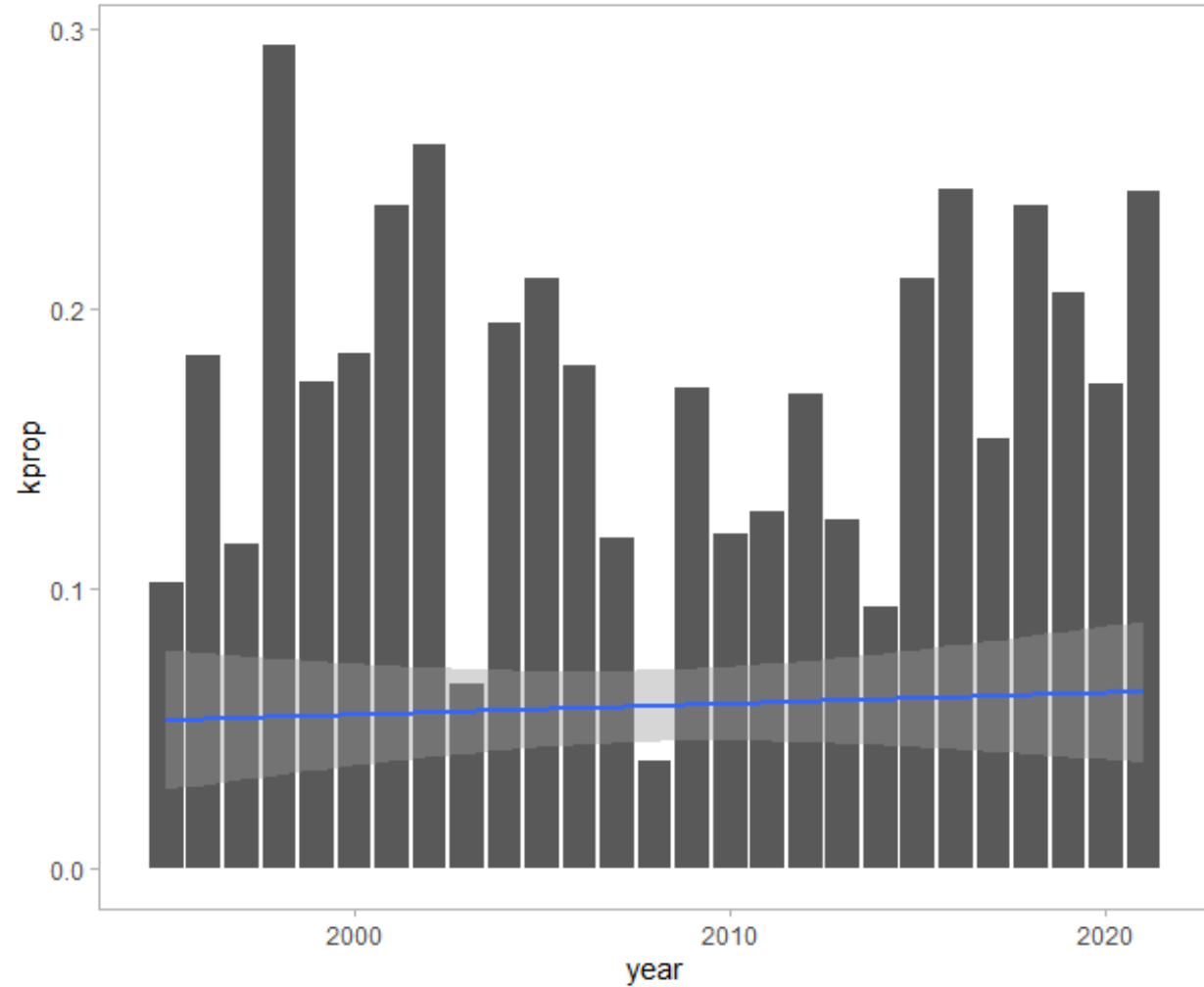
Proportion Observed Sets Depredated by Sperm Whales East



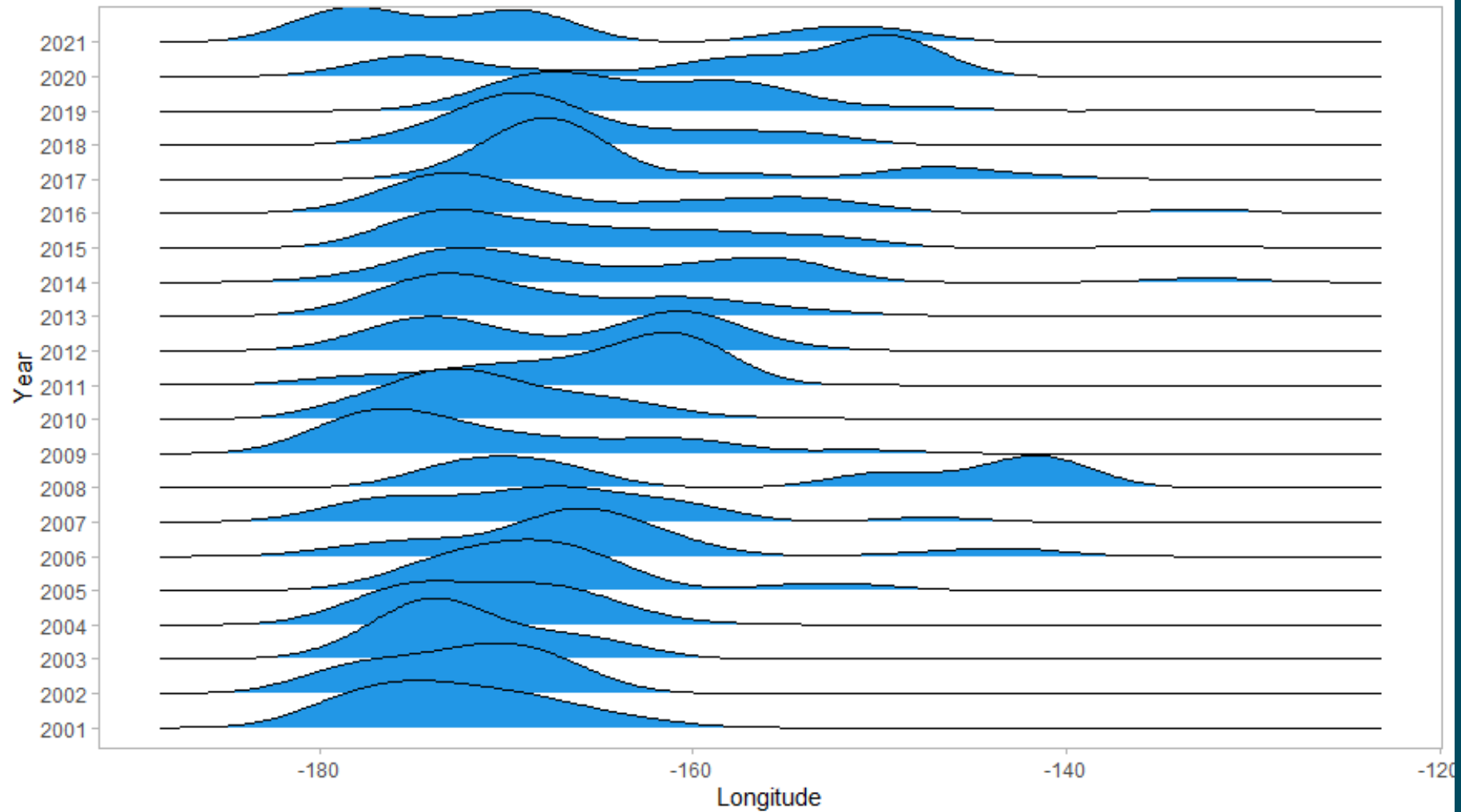
### Proportion Observed Sets Depredated by Killer Whales



### Proportion Observed Sets Depredated by Killer Whales West



Longitude Killer Whale Depredation by Year





## a) CPUE reductions

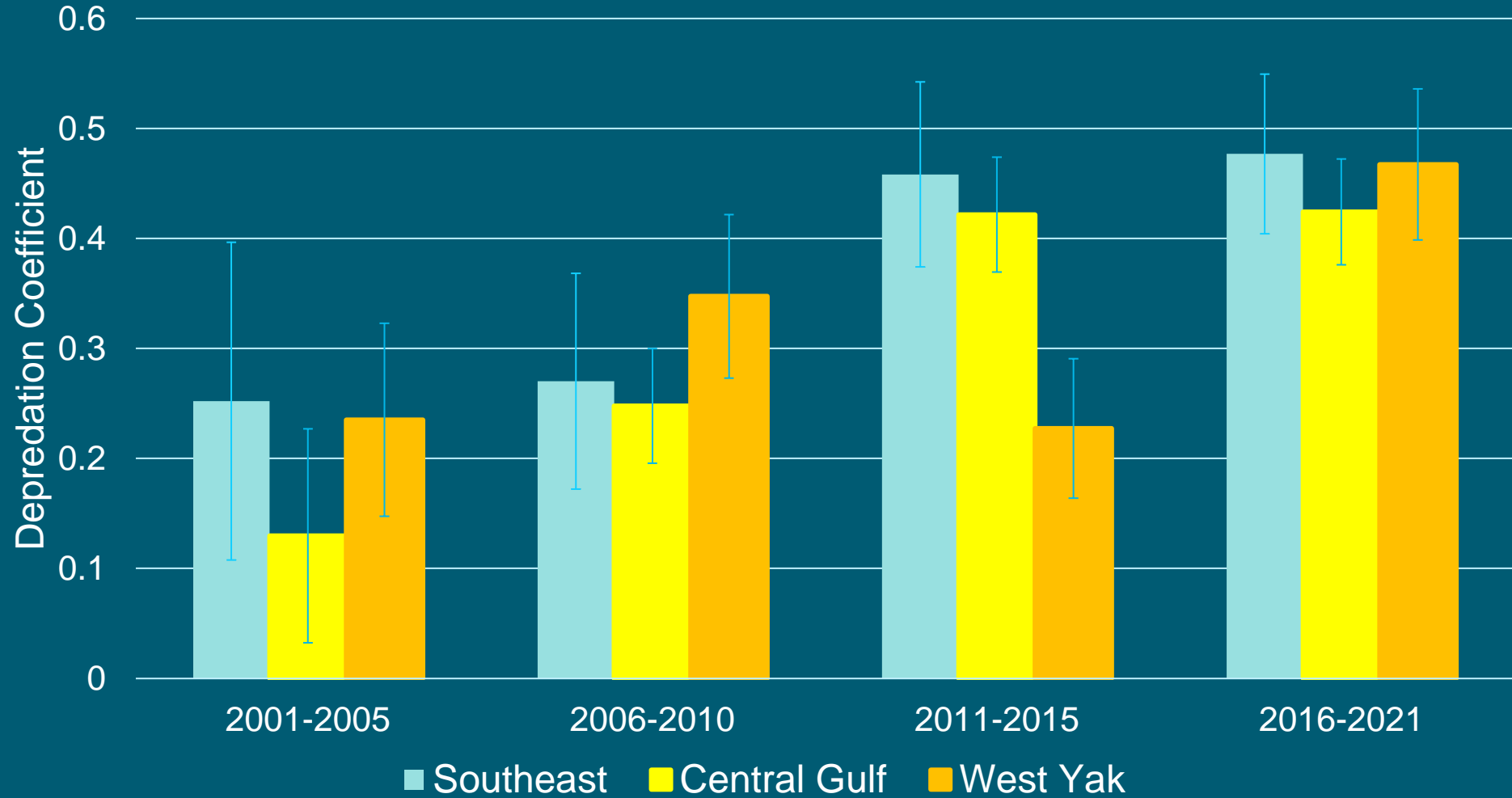
Sablefish  
CPUE

Considered explanatory terms	Input	Significant (p < 0.05)
Year	Factor random	Y
Vessel		Y
Depth (m)		Y
Julian day		Y
Vessel length (ft)		N
Grenadier CPUE	Smoother fixed	Y
Halibut CPUE		Y
Whale depredation		Y
% Haul Monitored		N
Lat/Long		Y

$$\text{Log}(\text{sable\_CPUE}) = \beta_0 + \text{whale\_dep} + \text{depth} + \text{jul\_day} + (\text{lat}, \text{long}) + \text{gren\_CPUE} + \text{hal\_CPUE} + \text{year} + \text{vessel} + \varepsilon$$

	Previous Estimate	Updated Estimates		
	Depredation coefficient (CPUE Reduction) 2017	Depredation coefficient (CPUE Reduction) 2022	2 * SE	%Dev Explained
BS	0.457	<b>0.468</b>	0.09	44.3%
AI	0.577	<b>0.646</b>	0.12	34.5%
WG	0.694	<b>0.764</b>	0.10	34.9%
CG	0.238	<b>0.358</b>	0.06	47.4%
WY	0.263	<b>0.353</b>	0.07	56.9%
SE	0.294	<b>0.412</b>	0.09	50.8%

## Sperm Whale Depredation Effect on CPUE





## b) Proportion sets depredated

- Data gridded into  $1/3^\circ$  by  $1/3^\circ$  (approx. 36 km by 25 km)
- Fishery characteristics averaged or summed per grid
- Zero Inflated Poisson (ziP) distribution GAM

Total sets  
depredated

### Considered explanatory terms

Average depth (m) per grid

Average # of hooks per grid – proxy for set length

Total # of hooks per grid – proxy for fishing effort per grid

Average sablefish CPUE non-depredated sets (kg/hook)

Total catch (t) – as estimated in NMFS blended Catch in Areas database- based on processor system pre-2003, and electronic logbook, observer and VMS data 2003 on

Average % haul monitored by onboard observers

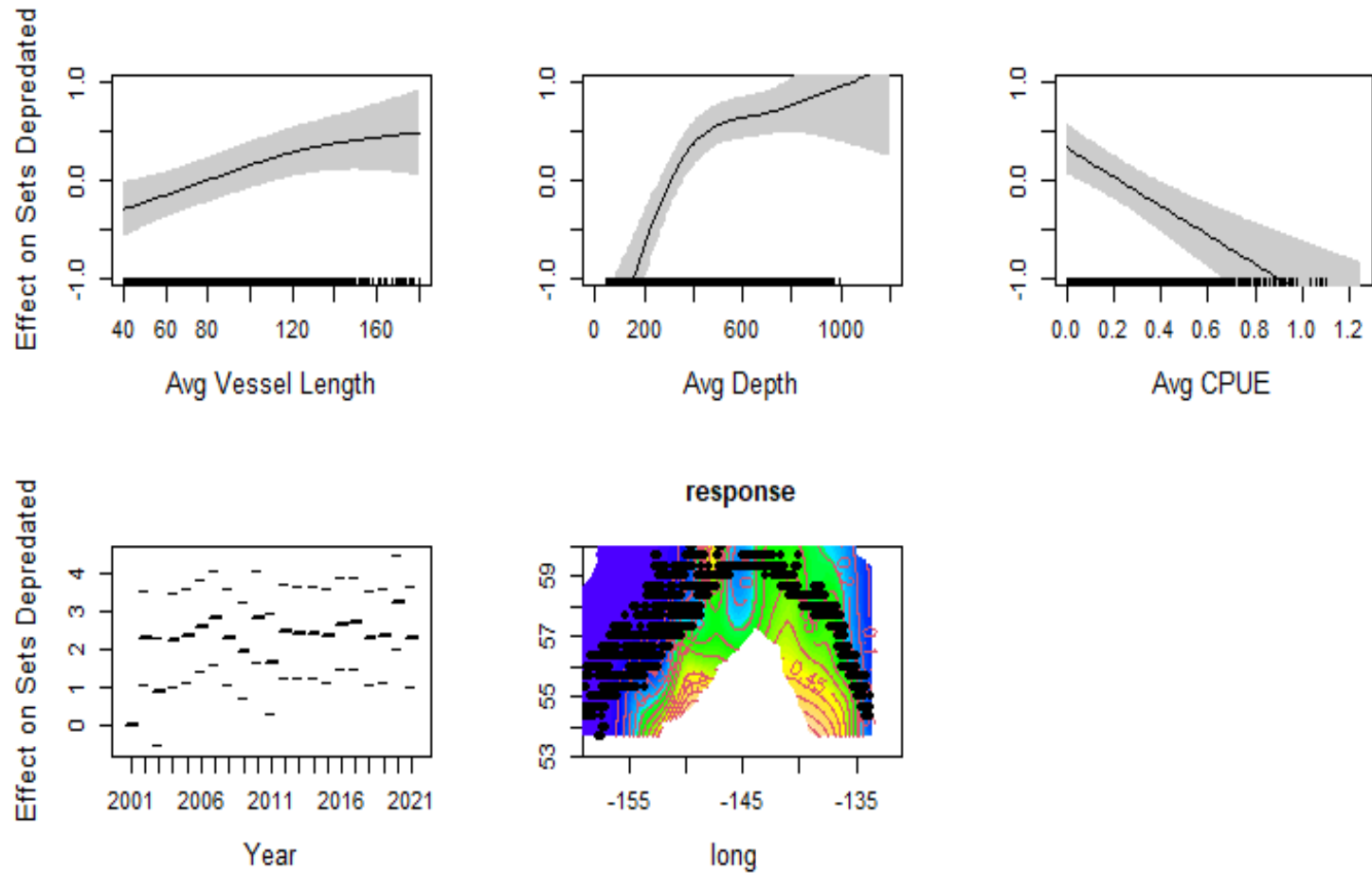
Average vessel length (ft)

Whale cluster - killer whales in western AK only, as defined by Fearnbach et al. 2013

# Fishery characteristics targeted by whales

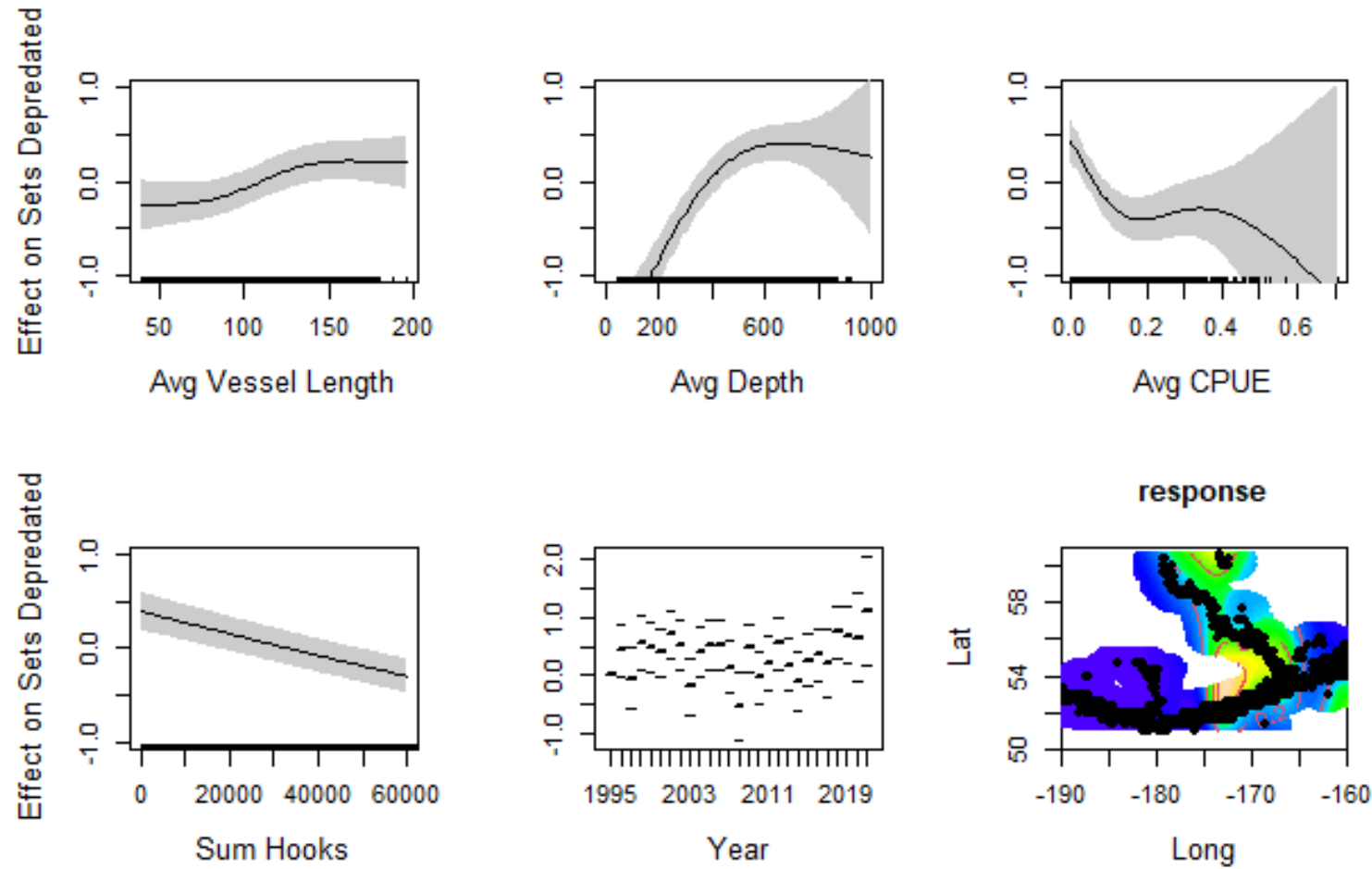
	Previous Estimates		Updated Estimates		
	Observed Proportion Sets Depredated	Model- Estimated Proportion Sets Depredated	Observed Proportion Sets Depredated 2022	Model- Estimated Proportion Sets Depredated 2022	%Dev Explained
AI	0.045	0.041	<b>0.046</b>	<b>0.039</b>	<b>40%</b> <b>n=3442</b>
BS	0.164	0.126	<b>0.170</b>	<b>0.141</b>	
WG	0.038	0.042	<b>0.037</b>	<b>0.041</b>	<b>64.4%</b> <b>n=2770</b>
CG	0.033	0.027	<b>0.029</b>	<b>0.025</b>	
WY	0.046	0.047	<b>0.052</b>	<b>0.054</b>	
SE	0.043	0.044	<b>0.060</b>	<b>0.048</b>	

## Gulf of Alaska Sperm Whale Depredation



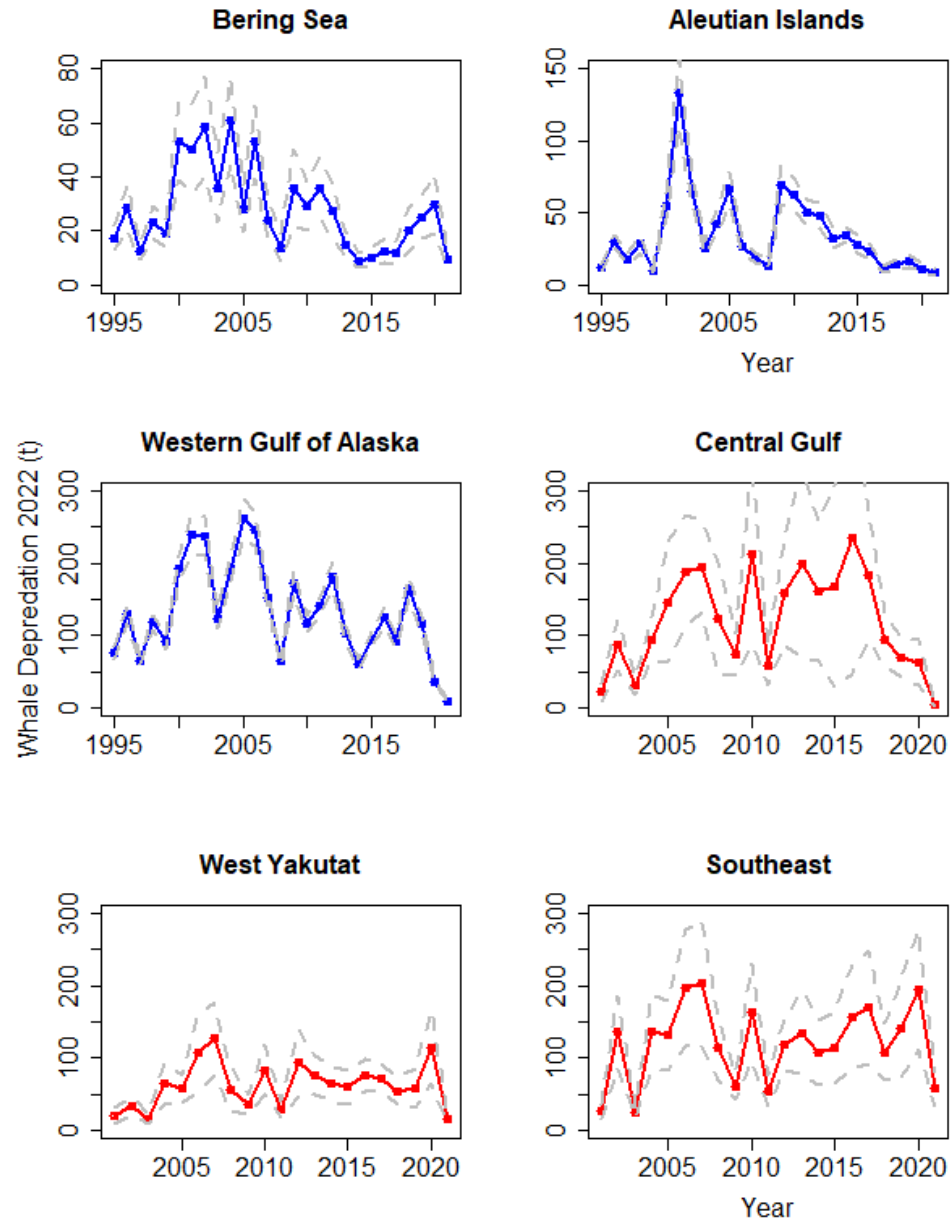
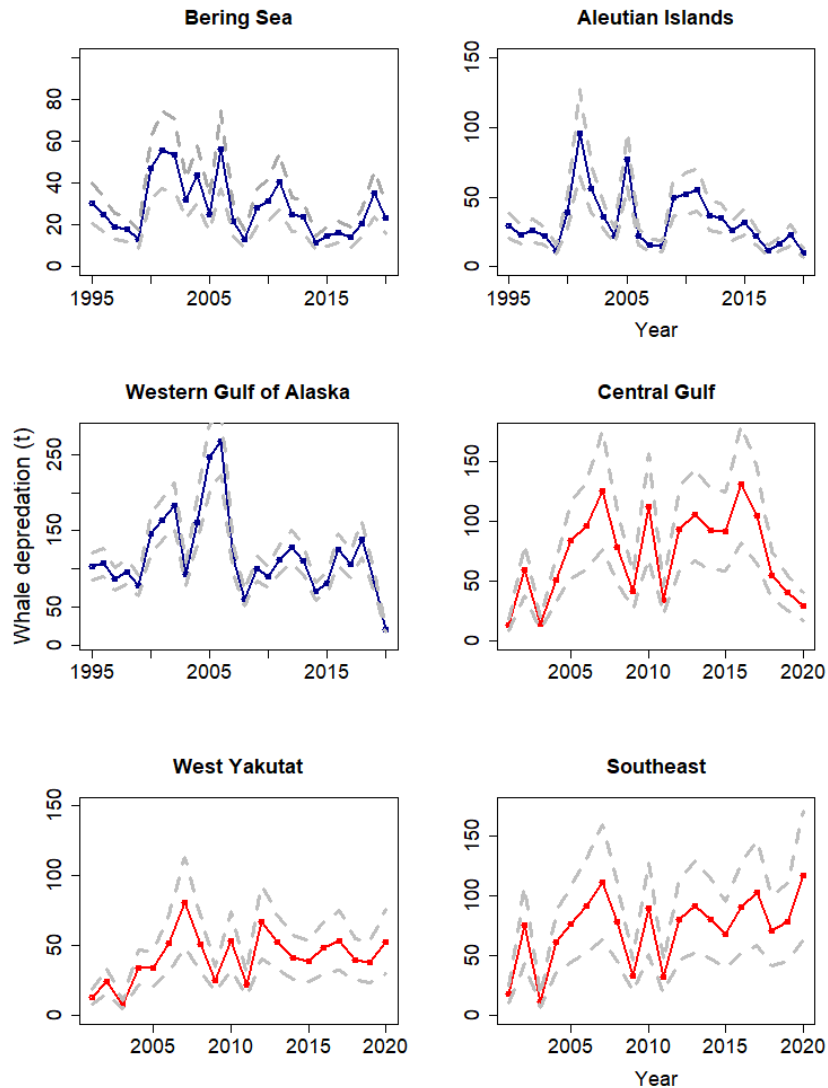


# Western Alaska Killer Whale Depredation



# c) Sablefish mortality (t) due to whales

2021  
SAFE



2022  
Updated

# SUMMARY

- Updated depredation estimates similar
- Sperm whale depredation coefficient (effect on CPUE) generally increasing over time
- Overall whale effect on sablefish mortality (and stock assessment) remains small
- Limited observer coverage
- Future work: Logbooks? Pot covariate?



Thanks for your time!



[mwilliams@oceanconservancy.org](mailto:mwilliams@oceanconservancy.org)  
[daniel.goethel@noaa.gov](mailto:daniel.goethel@noaa.gov)